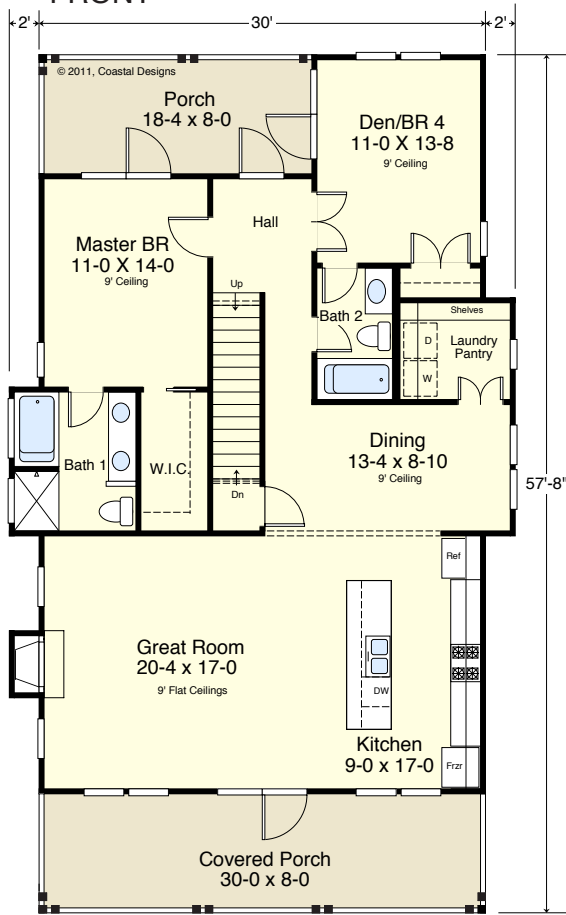


SEARAY 2 (2008-4)



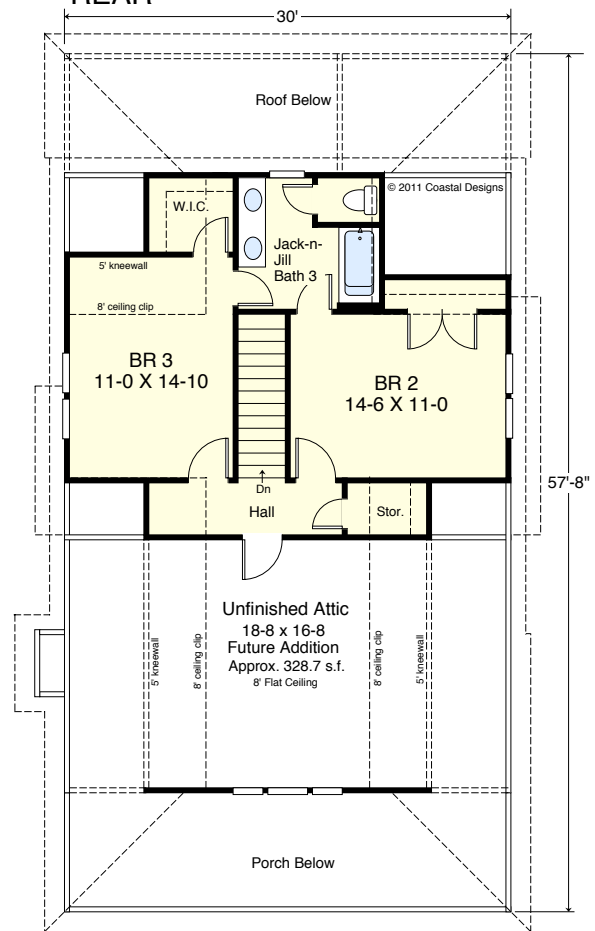
FRONT



FIRST FLOOR

Living 1,395.3 SF
Porches 386.6 SF
9' Ceilings

REAR



SECOND FLOOR

Living 612.6 SF
8' + Vaulted Ceilings

SEARAY 2 (2008-4)

2,008 square feet living area
4 bedrooms, 3 baths
34'-0" wide x 57'-8" deep
roof height 35'-2"

Living Areas:

1st Floor 1,395.3 SF
2nd Floor 612.6 SF
Total (Heated) 2,007.9 SF



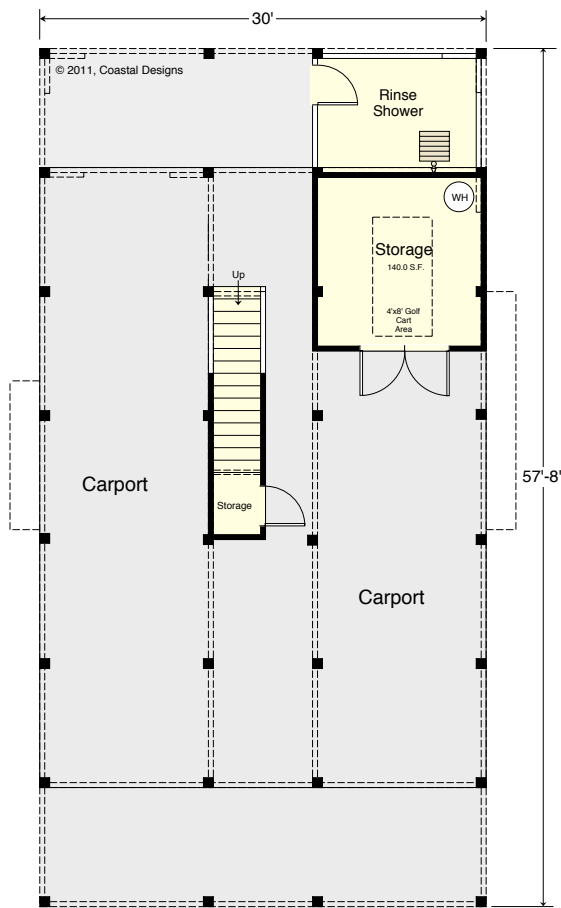
COASTAL DESIGNS ...home designs for coastal living

www.coastaldesigns.com · PO Box 379 · Wrightsville Beach · NC · 28480 · 910-509-3140 · Copyright © 2011 Coastal Designs
This plan depicts a sketch plan, designer reserves the right to make changes and modifications for improvements. Measurements and dimensions are approximate.

SEARAY 2 (2008-4)



LEFT



GROUND FLOOR

Stairs 65.2 SF
 Storage 136.0 SF
 Rinse Shower 90.6 SF
 Total "Footprint" Area 1,730.0 SF
 9' Ceilings

SEARAY 2 (2008-4)

2,008 square feet living area
 4 bedrooms, 3 baths
 34'-0" wide x 57'-8" deep
 roof height 35'-2"

Living Areas:

1st Floor 1,395.3 SF
 2nd Floor 612.6 SF
 Total (Heated) 2,007.9 SF



COASTAL DESIGNS ...home designs for coastal living

www.coastaldesigns.com · PO Box 379 · Wrightsville Beach · NC · 28480 · 910-509-3140 · Copyright © 2011 Coastal Designs

This plan depicts a sketch plan, designer reserves the right to make changes and modifications for improvements. Measurements and dimensions are approximate.