

SEARAY 1 (1915-4)



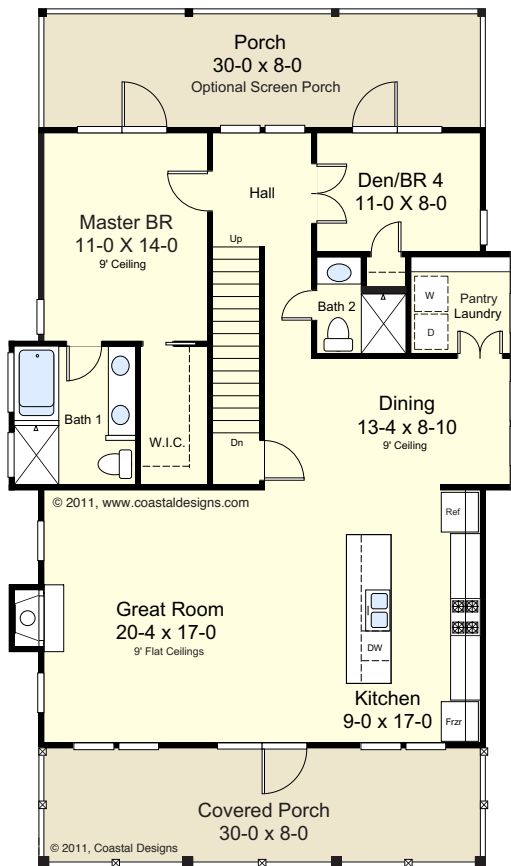
FRONT

© 2011, www.coastaldesigns.com



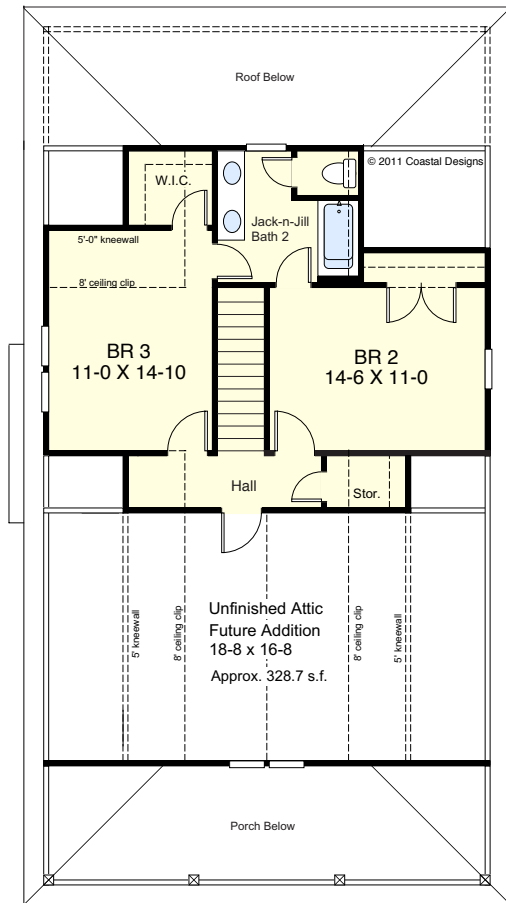
REAR

© 2011, www.coastaldesigns.com



FIRST FLOOR

Living 1,302.0 SF
Porches 480.0 SF
9' Ceilings



SECOND FLOOR

Living 612.6 SF
9' + Vaulted Ceilings

SEARAY I (1915-4)

1,915 square feet living area
4 bedrooms, 3 baths
34'-0" wide x 57'-8" deep
roof height 35'-2"

Living Areas:

1st Floor 1,302.0 SF
2nd Floor 612.6 SF
Total (Heated) 1,914.6 SF

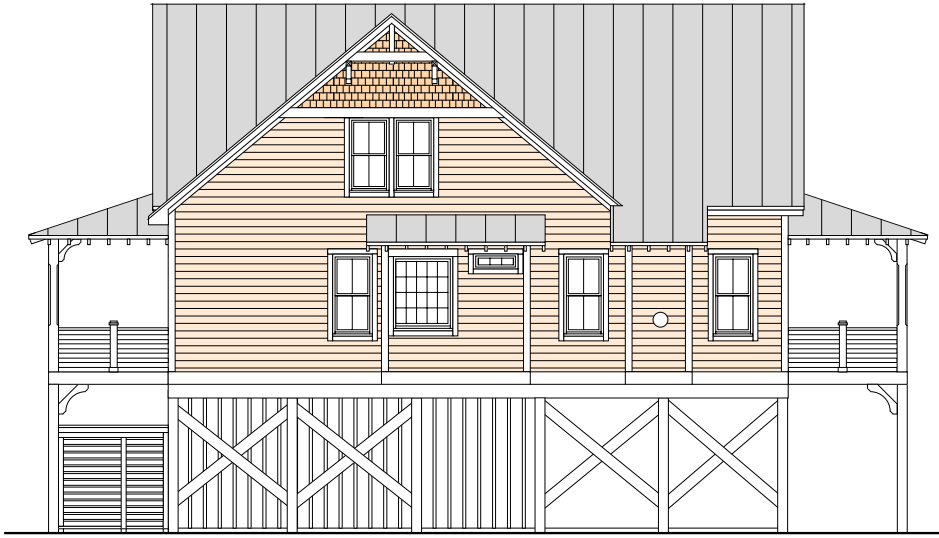


COASTAL DESIGNS ...home designs for coastal living

www.coastaldesigns.com · PO Box 379 · Wrightsville Beach · NC · 28480 · 910-509-3140 · Copyright © 2011 Coastal Designs

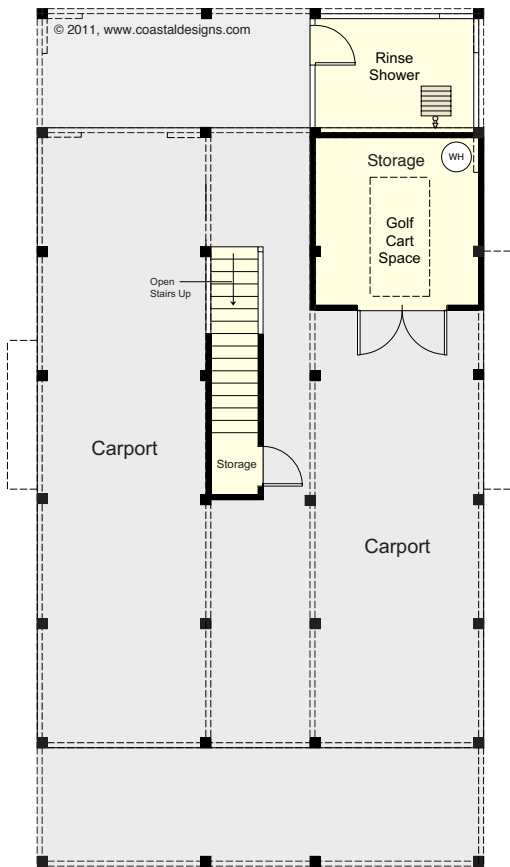
This plan depicts a sketch plan, designer reserves the right to make changes and modifications for improvements. Measurements and dimensions are approximate.

SEARAY 1 (1915-4)



LEFT

© 2011, www.coastaldesigns.com



GROUND FLOOR
9' Ceilings

SEARAY I (1915-4)

1,915 square feet living area
4 bedrooms, 3 baths
34'-0" wide x 57'-8" deep
roof height 35'-2"

Living Areas:
1st Floor 1,302.0 SF
2nd Floor 612.6 SF
Total (Heated) 1,914.6 SF



COASTAL DESIGNS ...home designs for coastal living

www.coastaldesigns.com · PO Box 379 · Wrightsville Beach · NC · 28480 · 910-509-3140 · Copyright © 2011 Coastal Designs
This plan depicts a sketch plan, designer reserves the right to make changes and modifications for improvements. Measurements and dimensions are approximate.