

LAUREL 2800-5E



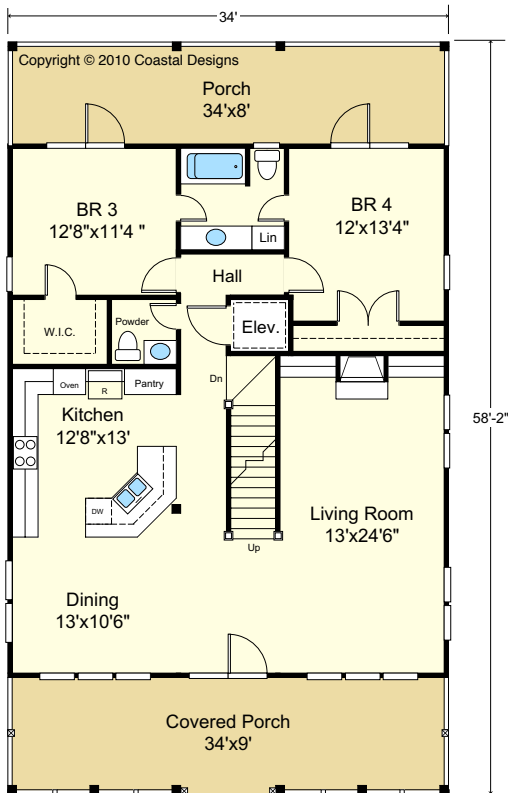
STREET FRONT

Copyright © 2010 Coastal Designs

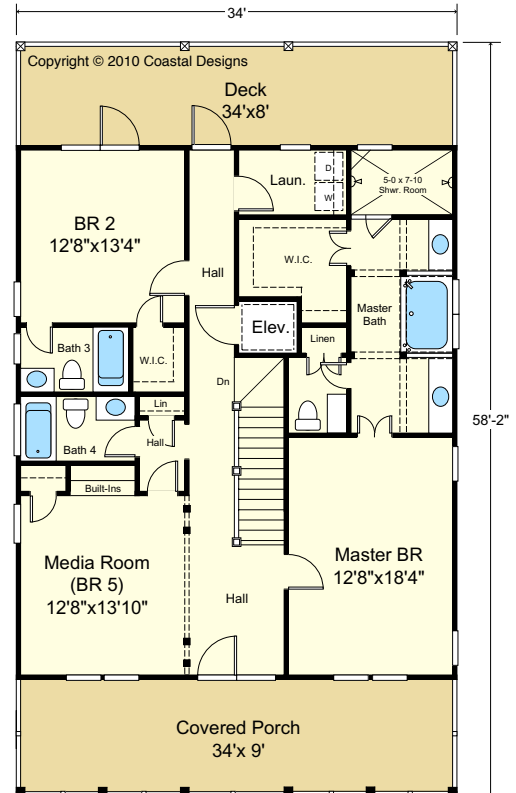


LEFT SIDE

Copyright © 2010 Coastal Designs



FIRST FLOOR
9' Ceilings



SECOND FLOOR
9' Ceilings

LIVING AREAS:

Ground Floor	1,236.7 s.f.
1st Floor	1,399.7 s.f.
2nd Floor	1,399.7 s.f.
Total Area	2,799.4 s.f.
Porches	1,136.0 s.f.
Garage	1,180.0 s.f.

LAUREL 2800-5E

2,800 square feet living area
5 bedrooms, 4 1/2 baths, elevator
34'-0" wide x 58'-2" deep
roof height 38'-6"



COASTAL DESIGNS ...home designs for coastal living

www.coastaldesigns.com · PO Box 379 · Wrightsville Beach · NC · 28480 · 910-509-3140 · Copyright © 2004-11 Coastal Designs
This plan depicts a sketch plan, designer reserves the right to make changes and modifications for improvements. Measurements and dimensions are approximate.

LAUREL 2800-5E



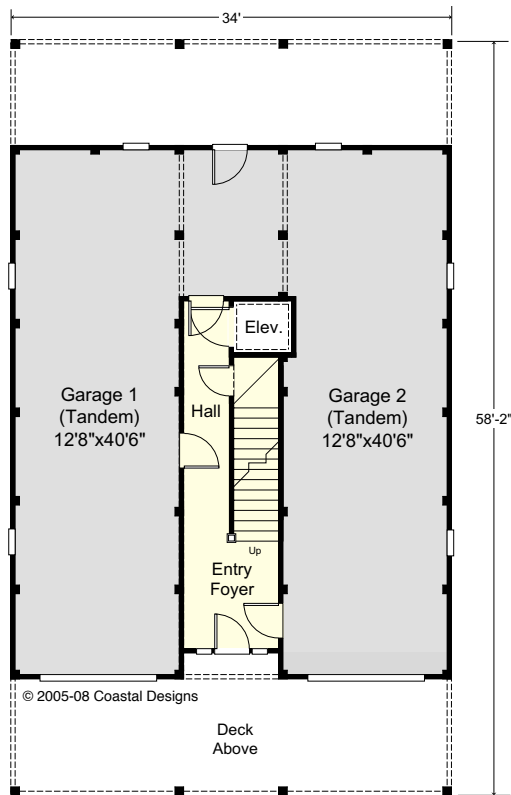
RIGHT SIDE

© 2005-08 Coastal Designs



REAR

Copyright © 2010 Coastal Designs



© 2005-08 Coastal Designs

GROUND
FLOOR
8' Ceilings

LIVING AREAS:

Ground Floor	1,236.7 s.f.
1st Floor	1,399.7 s.f.
2nd Floor	1,399.7 s.f.
Total Area	2,799.4 s.f.
Porches	1,136.0 s.f.
Garage	1,180.0 s.f.

LAUREL 2800-5E

2,800 square foot living area
5 bedrooms, 4 1/2 baths, elevator
34'-0" wide x 58'-2" deep
roof height 38'-6"



COASTAL DESIGNS ...home designs for coastal living

www.coastaldesigns.com · PO Box 379 · Wrightsville Beach · NC · 28480 · 910-509-3140 · Copyright © 2004-11 Coastal Designs
This plan depicts a sketch plan, designer reserves the right to make changes and modifications for improvements. Measurements and dimensions are approximate.