

BOGUE 1850-4



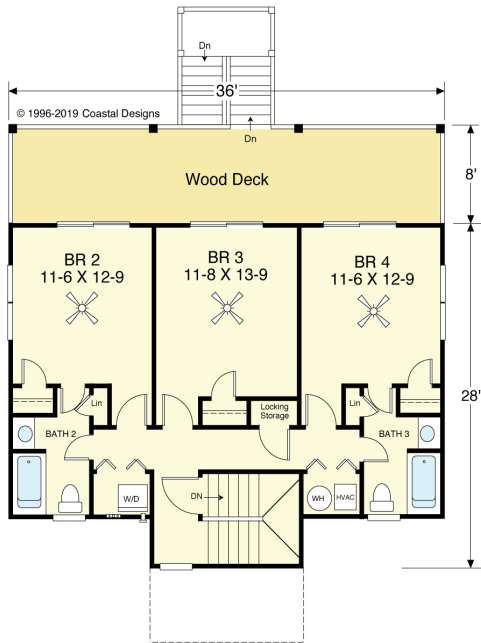
RIGHT SIDE

© 1995-2009 Coastal Designs



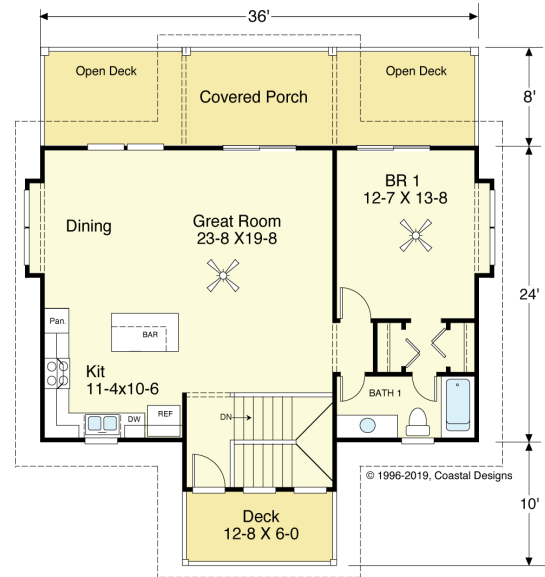
WATER FRONT

© 1996-2019 Coastal Designs



FIRST FLOOR PLAN

914.7 S.F.
8' Ceilings



SECOND FLOOR PLAN

934.7 S.F.
9' Ceilings

COASTAL DESIGNS

cottages for coastal living

web: coastaldesigns.com
email: designer@coastaldesigns.com

Copyright © 2003-2024, all rights reserved by Coastal Designs.
This plan depicts a sketch plan, designer reserves the right to make changes and modifications for improvements. Measurements and dimensions are approximate.

BOGUE 1850-4

1,849.4 Square Feet Living Area
38'-6" wide x 42'-0" deep x 33'-6" high

1st Floor	914.7 S.F.	4 Bedrooms 3 Baths
2nd Floor	934.7 S.F.	
Total Living Area	1,849.4 S.F.	
Porches	652.0 S.F.	

BOGUE 1850-4



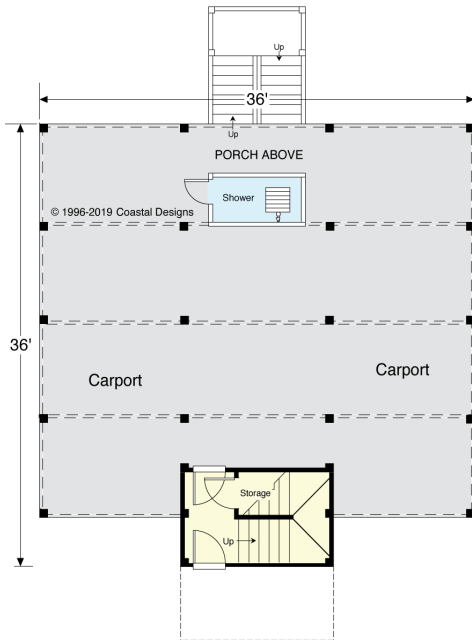
STREET FRONT

© 1996-2019 Coastal Designs



LEFT SIDE

© 1996-2019 Coastal Designs



GROUND FLOOR PLAN
8' Ceilings

The “BOGUE” takes its name from the Bogue Sound area of North Carolina’s Outer Banks. This plan has been a very successful cottage design, whose success is from a terrific layout. The bedrooms are placed on the lower level to give the best views to the living level above. All Bedrooms also have waterfront views as well as deck access. With three full baths at your service, getting ready for fun is always easier. With the main bedroom suite on the same level as the living area, the plan could be great for retirement and has plenty of room for frequent guests.

The stairs from the ground-level garage will always have an all-weather entry. The First and Second Floors can also be switched, depending on your view and living needs.

COASTAL DESIGNS

cottages for coastal living

web: coastaldesigns.com
email: designer@coastaldesigns.com

Copyright © 2003-2024, all rights reserved by Coastal Designs. This plan depicts a sketch plan, designer reserves the right to make changes and modifications for improvements. Measurements and dimensions are approximate.

BOGUE 1850-4

1,849.4 Square Feet Living Area
38'-6" wide x 42'-0" deep x 33'-6" high

1st Floor	914.7 S.F.	4 Bedrooms
2nd Floor	934.7 S.F.	
Total Living Area	1,849.4 S.F.	
Porches	652.0 S.F.	