

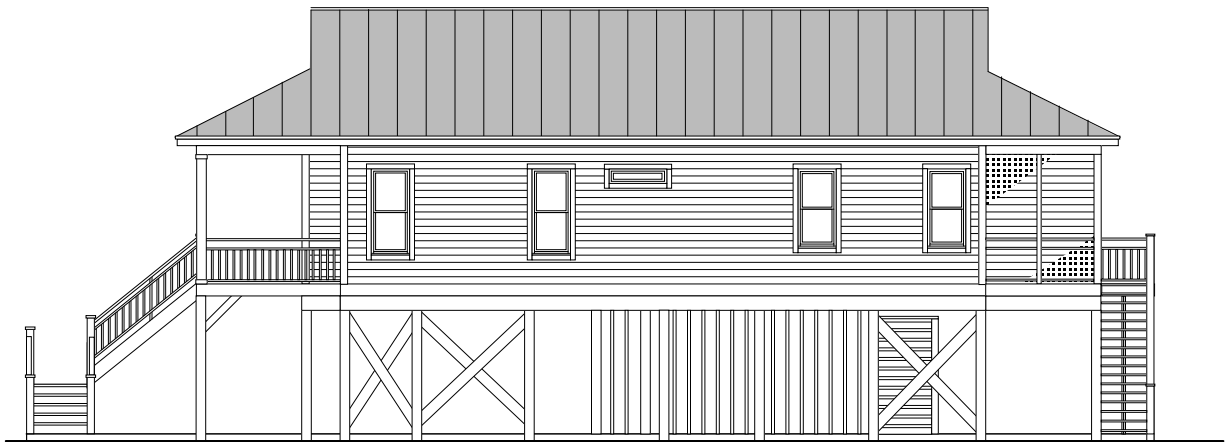
SKIFF 1590-3E



REAR



FRONT



RIGHT SIDE



LEFT SIDE

COASTAL DESIGNS

www.coastal designs.com
PO Box 379 · Wrightsville Beach · NC · 28480 · 910-616-6905
Copyright © 2023, Coastal Designs

This plan depicts a sketch plan, designer reserves the right to make changes and modifications for improvements. Measurements and dimensions are approximate.

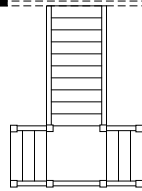
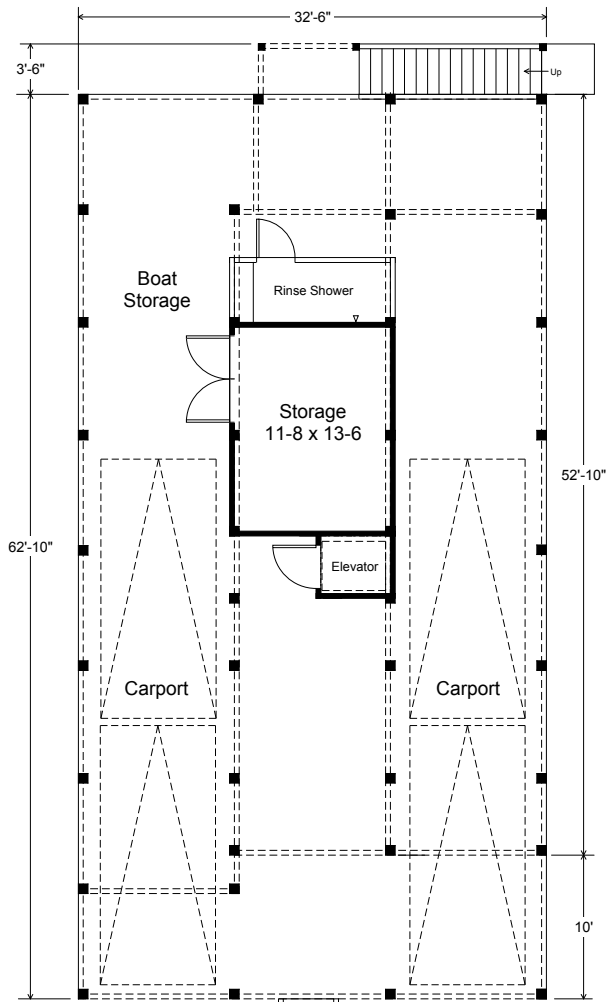
SKIFF 1590-3E

1,589.6 Square Feet Living Area, Elevator
3 bedrooms, 2 Baths, 2 Levels
32'-6" wide x 78'-10" deep x 31'-4" high

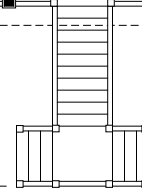
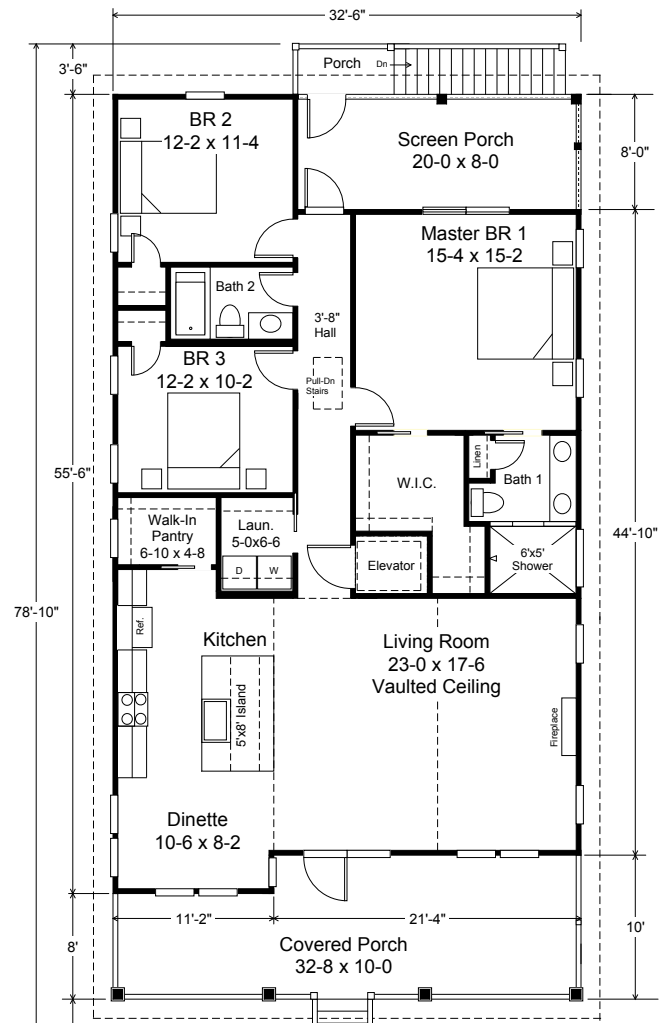
FLOOR AREAS:

Ground Floor	25.6 SF
1st Floor	1,589.6 SF
Total Area	1,589.6 SF
Porches	455.2 SF

SKIFF 1590-3E



Ground Floor
 Enclosed Area (Elevator) 25.6 s.f.
 Storage/Utility 155.3 s.f.
 9' Ceiling Heights



1st Floor
 Living Area 1,589.6 s.f.
 9' Ceiling Heights

COASTAL DESIGNS

www.coastaldesigns.com
 PO Box 379 · Wrightsville Beach · NC · 28480 · 910-616-6905
 Copyright © 2023, Coastal Designs

This plan depicts a sketch plan, designer reserves the right to make changes and modifications for improvements. Measurements and dimensions are approximate.

SKIFF 1590-3E

1,589.6 Square Feet Living Area, Elevator
 3 bedrooms, 2 Baths, 2 Levels
 32'-6" wide x 78'-10" deep x 31'-4" high

FLOOR AREAS:

Ground Floor	25.6 SF
1st Floor	1,589.6 SF
Total Area	1,589.6 SF
Porches	455.2 SF