

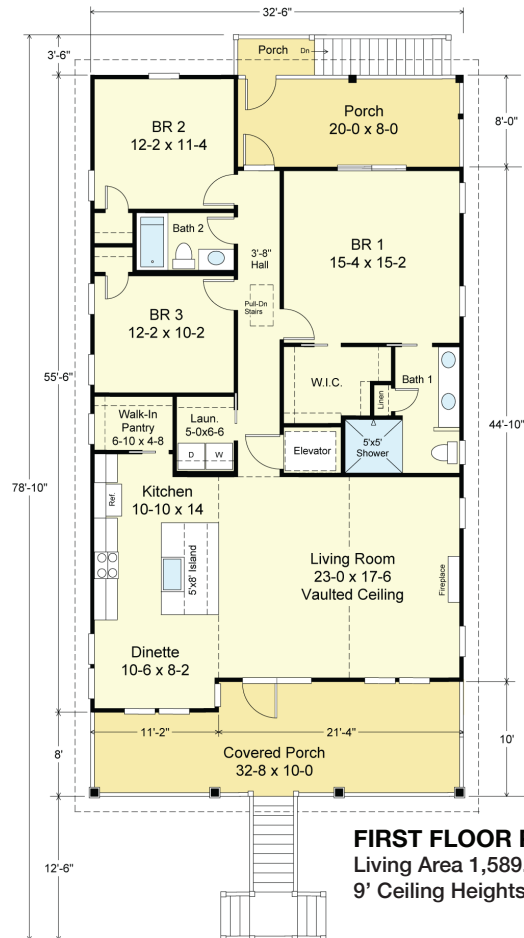
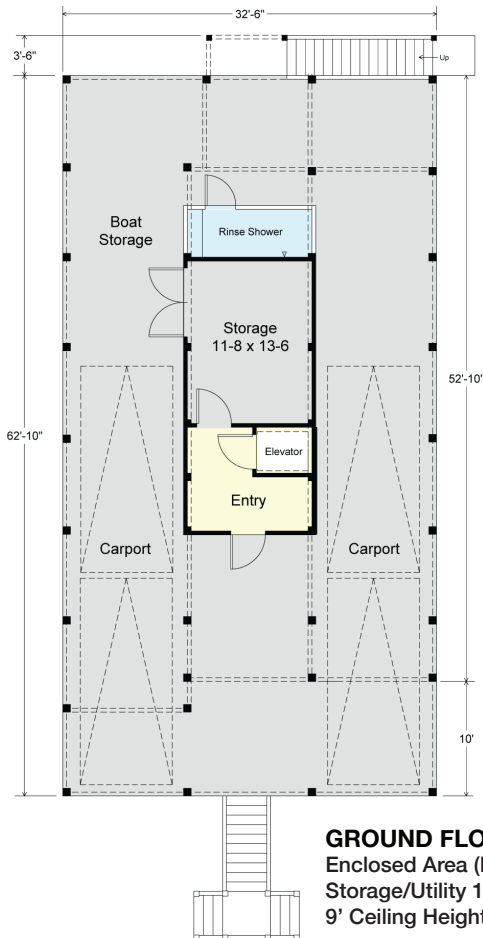
# SKIFF 1590-3E



**FRONT**



**REAR**



## COASTAL DESIGNS

cottages for coastal living

web: [coastaldesigns.com](http://coastaldesigns.com)  
 email: [designer@coastaldesigns.com](mailto:designer@coastaldesigns.com)

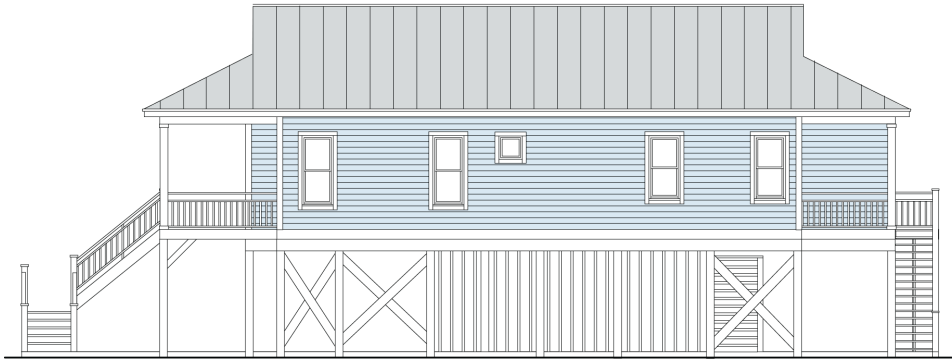
Copyright © 2003-2024, all rights reserved by Coastal Designs.  
 This plan depicts a sketch plan, designer reserves the right to make changes and modifications for improvements. Measurements and dimensions are approximate.

## SKIFF 1590-3E

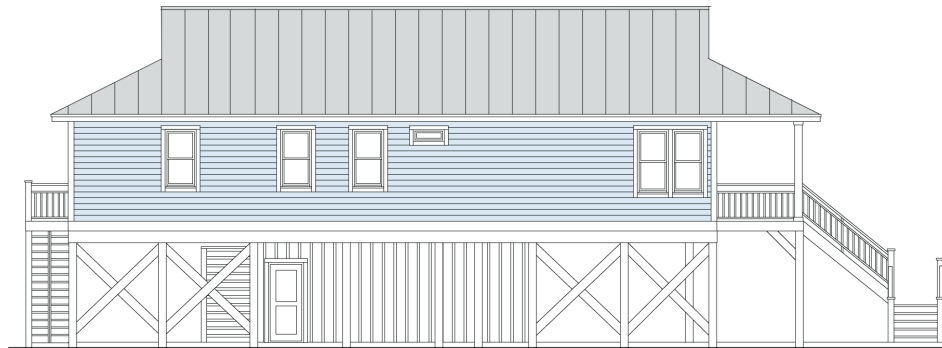
1,589.6 Square Feet Living Area  
 32'-6" wide x 78'-10" deep x 31'-4" high

Ground Floor	25.6 S.F.	3 Bedrooms 2 Baths 2 Levels Elevator
1st Floor	1,589.6 S.F.	
Total Area	1,589.6 S.F.	
Porches	455.2 S.F.	

# SKIFF 1590-3E



**RIGHT SIDE**



**LEFT SIDE**

## COASTAL DESIGNS

cottages for coastal living

web: [coastaldesigns.com](http://coastaldesigns.com)  
email: [designer@coastaldesigns.com](mailto:designer@coastaldesigns.com)

Copyright © 2003-2024, all rights reserved by Coastal Designs.  
This plan depicts a sketch plan, designer reserves the right to make changes and modifications for improvements. Measurements and dimensions are approximate.

## SKIFF 1590-3E

1,589.6 Square Feet Living Area  
32'-6" wide x 78'-10" deep x 31'-4" high

Ground Floor	25.6 S.F.	3 Bedrooms
1st Floor	1,589.6 S.F.	2 Baths
Total Area	1,589.6 S.F.	2 Levels
Porches	455.2 S.F.	Elevator