

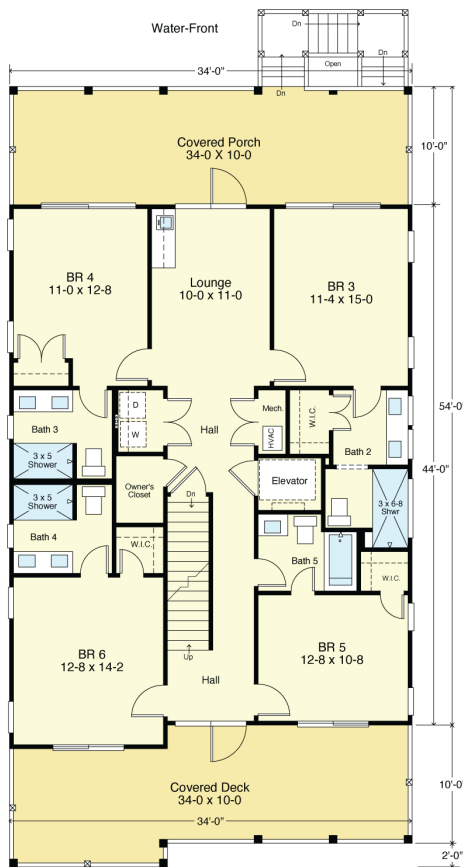
WATERSIDE 3045-6E



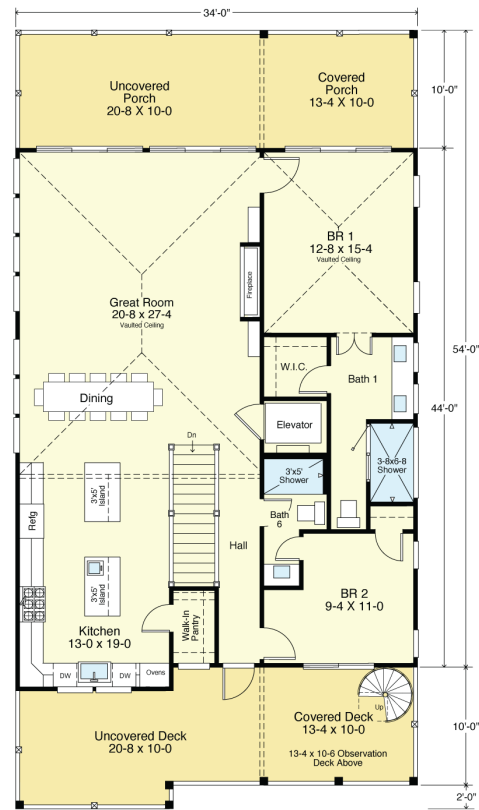
WATER FRONT



RIGHT SIDE



FIRST FLOOR PLAN
 Living Area 1,522.7 S.F.
 Deck Area 626.0 S.F.
 9'-1 1/2" Ceilings



SECOND FLOOR PLAN
 Living Area 1,522.7 S.F.
 Deck Area 626.0 S.F.
 9'-1 1/2" + Vaulted Ceilings

COASTAL DESIGNS

cottages for coastal living

web: coastaldesigns.com
 email: designer@coastaldesigns.com

Copyright © 2003-2024, all rights reserved by Coastal Designs.
 This plan depicts a sketch plan, designer reserves the right to make changes and modifications for improvements. Measurements and dimensions are approximate.

WATERSIDE 3045-6E

3,045.4 Square Feet Living Area
 34'-0" wide x 64'-0" deep x 34'-8" high

Footprint	1,836.0 S.F.
Ground Floor (Entry Foyer)	208.4 S.F.
1st Floor	1,522.7 S.F.
2nd Floor	1,522.7 S.F.
Total Area	3,045.4 S.F.

6 Bedrooms
 6 Baths
 2 Levels
 Elevator

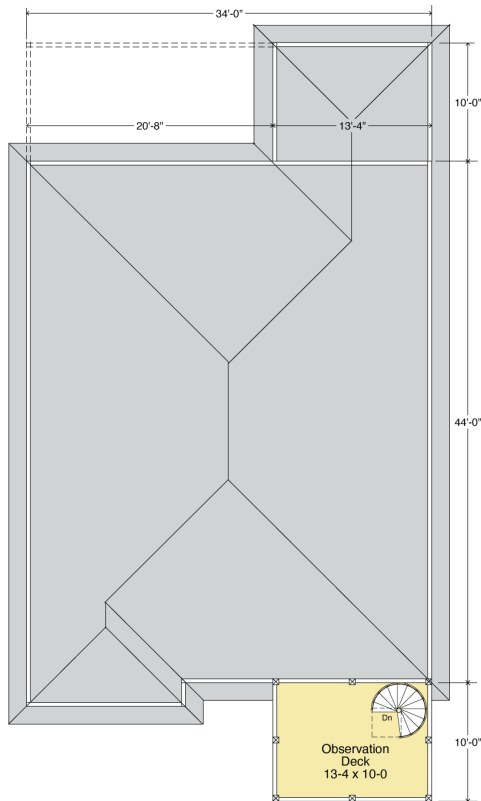
WATERSIDE 3045-6E



STREET FRONT

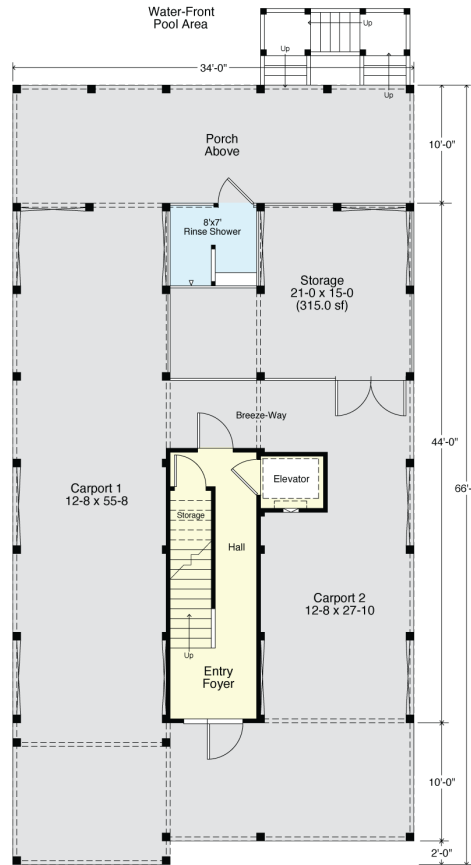


LEFT SIDE



ROOF PLAN

Roof Impervious "Footprint" 2,236.7 S.F.
Roof Observation Deck 133.3 S.F.



GROUND FLOOR PLAN

Carport Area 1,298.5 S.F.
Entry Area 222.5 S.F. (Unfinished Space)
Storage Area 315.0 S.F.

COASTAL DESIGNS

cottages for coastal living

web: coastaldesigns.com
email: designer@coastaldesigns.com

Copyright © 2003-2024, all rights reserved by Coastal Designs.
This plan depicts a sketch plan, designer reserves the right to make changes and modifications for improvements. Measurements and dimensions are approximate.

WATERSIDE 3045-6E

3,045.4 Square Feet Living Area
34'-0" wide x 64'-0" deep x 34'-8" high

Footprint	1,836.0 S.F.
Ground Floor (Entry Foyer)	208.4 S.F.
1st Floor	1,522.7 S.F.
2nd Floor	1,522.7 S.F.
Total Area	3,045.4 S.F.

6 Bedrooms
6 Baths
2 Levels
Elevator