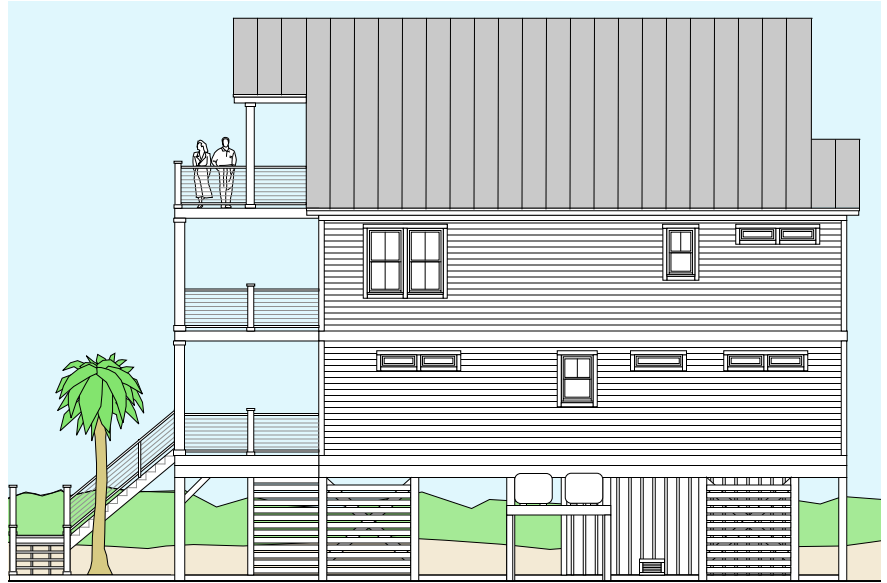


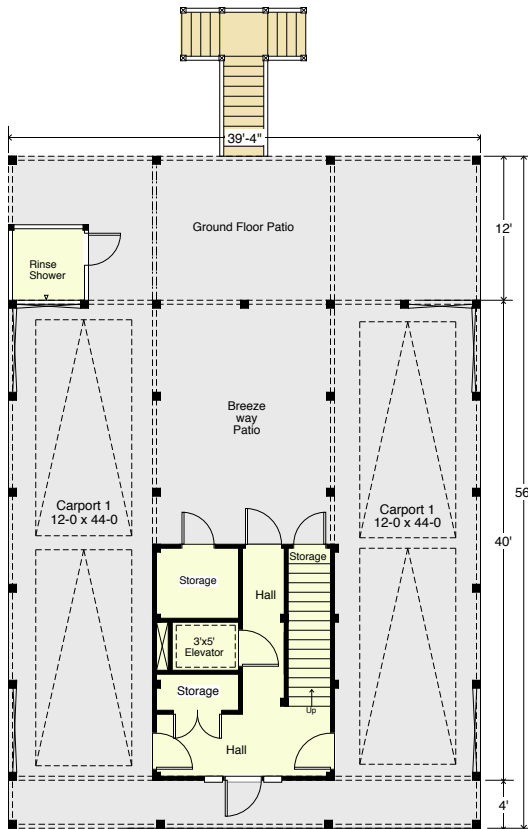
PORPOISE 4248-7E



Street Front



Left Side



Ground Floor Plan

Entry Hall = 207.5 s.f.
 Storage Area = 92.0 s.f.
 Total Enclosed Area = 299.5 s.f.
 9'-1 1/2" Ceiling Ht.



1st Floor

Living Area = 1,674.6 s.f.
 Ocean Porch Area = 422.6 s.f.
 Back Porch Area = 56.0 s.f.
 9'-1 1/2" Ceiling Ht.



**COASTAL
DESIGNS**

cottages for coastal living

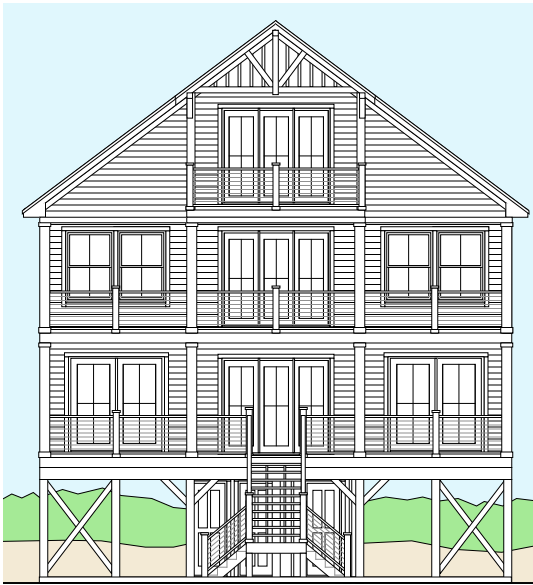
www.coastaldesigns.com
 PO Box 379 · Wrightsville Beach · NC · 28480 ·
 910-616-6905
 Copyright © 2020, Coastal Designs

This plan depicts a sketch plan, designer reserves the right to make changes and modifications for improvements. Measurements and dimensions are approximate.

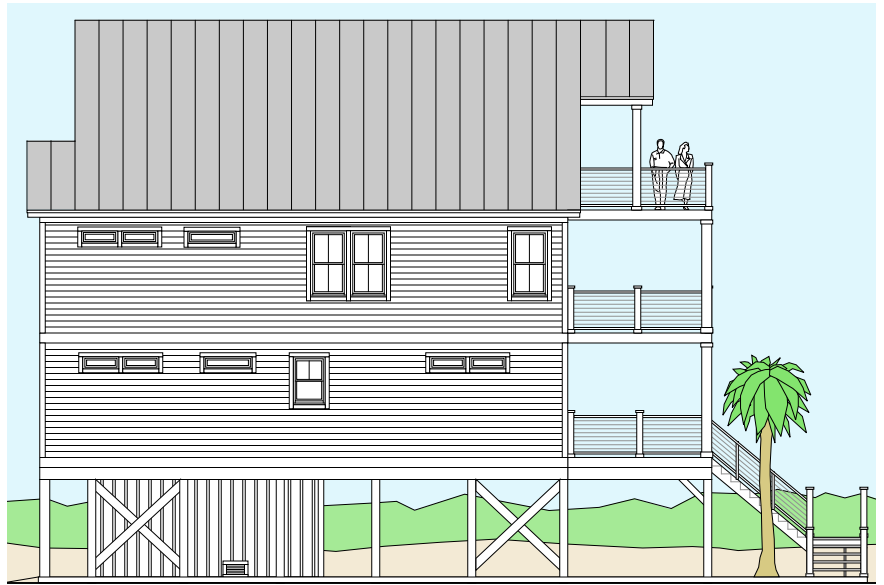
PORPOISE 4248-7E

3,619.3 square feet living area
 7 bedrooms, 7 1/2 baths
 39'-4" wide x 56'-0" deep x 46'-10" high
 Ground Floor = 299.5 S.F.
 1st Floor = 1,674.6 S.F.
 2nd FLOOR = 1,674.6 S.F.
 3rd FLOOR = 600.0 S.F.
 Total Living = 4,248.7 S.F.

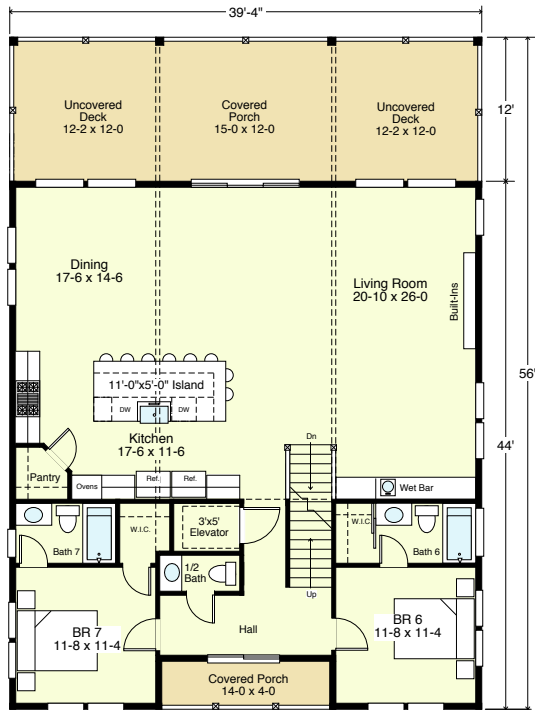
PORPOISE 4248-7E



Water Front

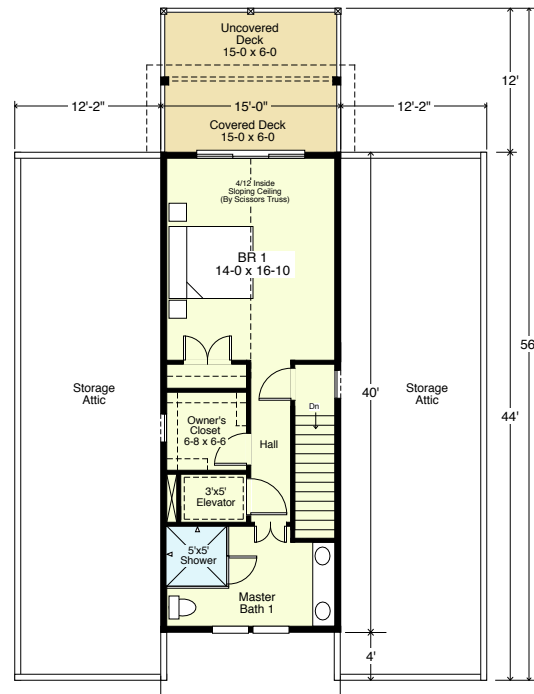


Right Side



2nd Floor

Living Area 1,674.6 s.f.
 Ocean Porch Area 422.6 s.f.
 Back Porch Area 56.0 s.f.
 9'-1 1/2" Ceiling Ht.



3rd Floor

Living Area 600.0 s.f.
 Ocean Porch Area 176.0 s.f.
 9'-1 1/2" + Vaulted Ceiling Ht.



**COASTAL
DESIGNS**

cottages for coastal living

www.coastaldesigns.com
 PO Box 379 · Wrightsville Beach · NC · 28480 ·
 910-616-6905
 Copyright © 2020, Coastal Designs

This plan depicts a sketch plan, designer reserves the right to make changes and modifications for improvements. Measurements and dimensions are approximate.

PORPOISE 4248-7E

3,619.3 square feet living area
 7 bedrooms, 7 1/2 baths
 39'-4" wide x 56'-0" deep x 46'-10" high
 Ground Floor = 299.5 S.F.
 1st Floor = 1,674.6 S.F.
 2nd FLOOR = 1,674.6 S.F.
 3rd FLOOR = 600.0 S.F.
 Total Living = 4,248.7 S.F.