

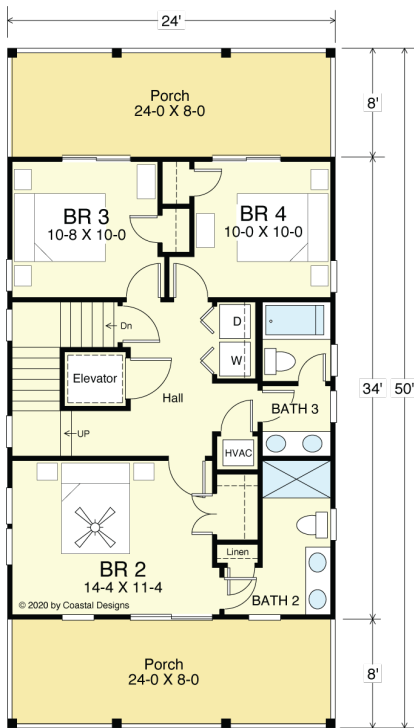
# ISLANDER 2489-5E



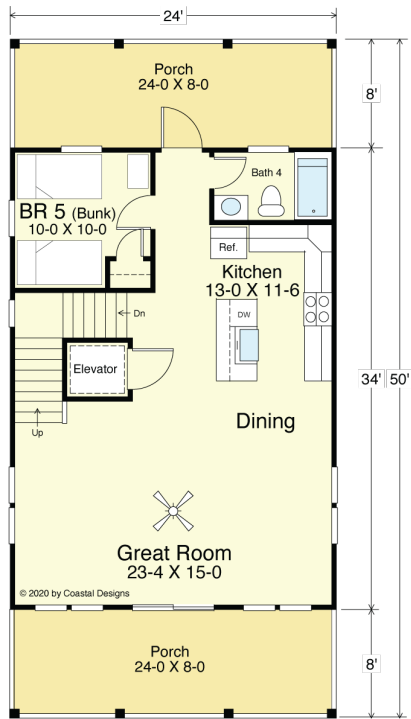
STREET FRONT



RIGHT SIDE



FIRST FLOOR PLAN  
816.0 S.F.  
8'-0" Ceiling Heights



SECOND FLOOR PLAN  
816.0 S.F.  
9'-0" Flat Ceiling Heights

## COASTAL DESIGNS

cottages for coastal living

web: [coastaldesigns.com](http://coastaldesigns.com)  
email: [designer@coastaldesigns.com](mailto:designer@coastaldesigns.com)

Copyright © 2003-2024, all rights reserved by Coastal Designs.  
This plan depicts a sketch plan, designer reserves the right to make changes and modifications for improvements. Measurements and dimensions are approximate.

## ISLANDER 2489-5E

2,488.9 Square Feet Living Area  
24'-0" wide x 50'-0" deep x 40'-10" high

Ground Floor	184.0 S.F.
1st Floor	816.0 S.F.
2nd Floor	816.0 S.F.
3rd Floor	672.8 S.F.
Total Area (Heated)	2,488.8 S.F.

5 Bedrooms  
4 Baths  
Elevator

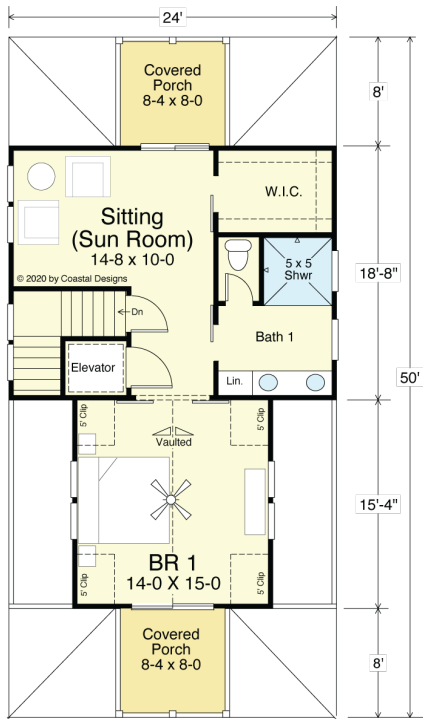
# ISLANDER 2489-5E



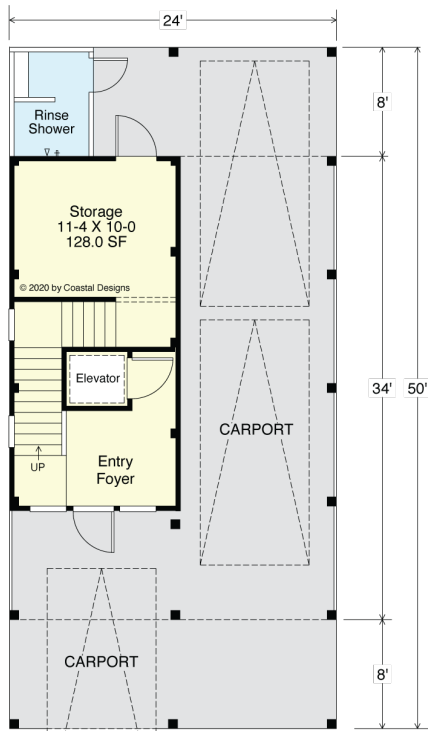
REAR



LEFT SIDE



**THIRD FLOOR PLAN**  
672.8 S.F.  
8'-0" Flat + Vaulted Ceiling Heights



**GROUND FLOOR PLAN**  
Entry 184.0 S.F.  
Storage 131.5 S.F.

## COASTAL DESIGNS

cottages for coastal living

web: [coastaldesigns.com](http://coastaldesigns.com)  
email: [designer@coastaldesigns.com](mailto:designer@coastaldesigns.com)

Copyright © 2003-2024, all rights reserved by Coastal Designs.  
This plan depicts a sketch plan, designer reserves the right to make changes and modifications for improvements. Measurements and dimensions are approximate.

## ISLANDER 2489-5E

2,488.9 Square Feet Living Area  
24'-0" wide x 50'-0" deep x 40'-10" high

Ground Floor	184.0 S.F.
1st Floor	816.0 S.F.
2nd Floor	816.0 S.F.
3rd Floor	672.8 S.F.
Total Area (Heated)	2,488.8 S.F.

5 Bedrooms  
4 Baths  
Elevator