

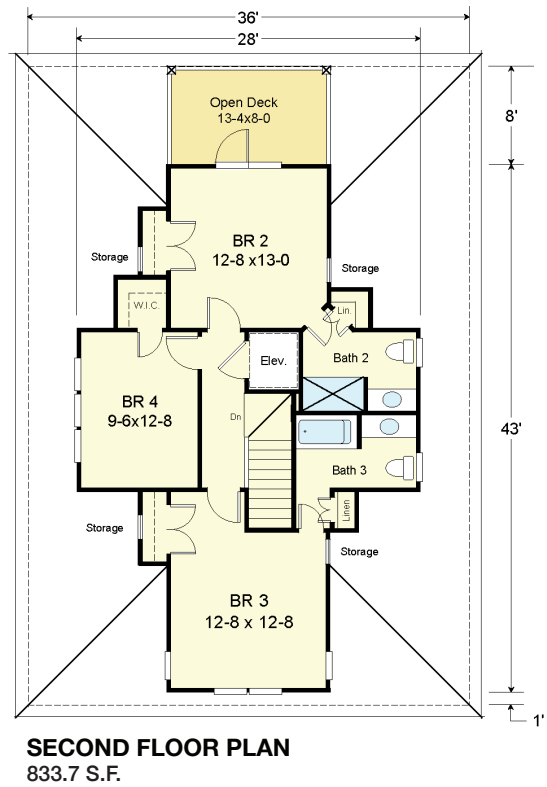
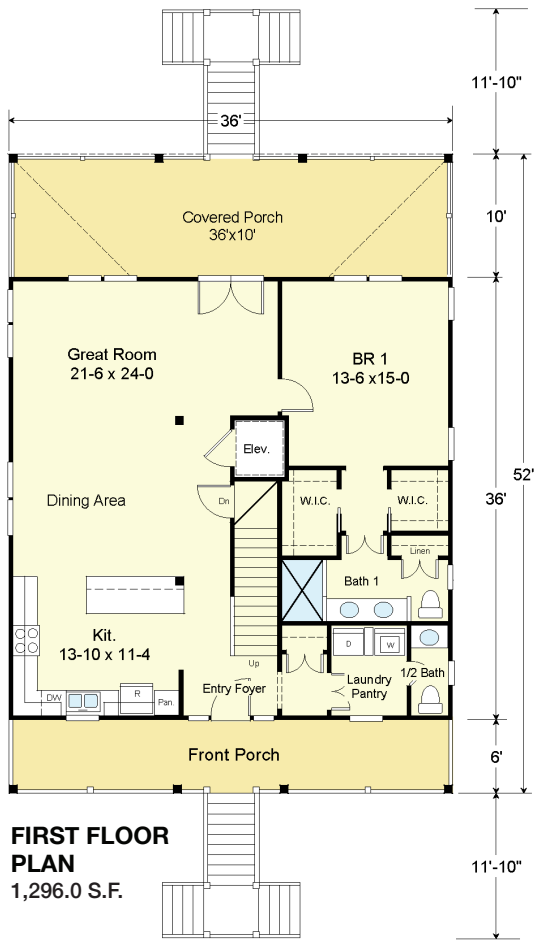
CAPE POINT 2429-6E



STREET FRONT



REAR



COASTAL DESIGNS

cottages for coastal living

web: coastaldesigns.com
email: designer@coastaldesigns.com

Copyright © 2003-2024, all rights reserved by Coastal Designs. This plan depicts a sketch plan, designer reserves the right to make changes and modifications for improvements. Measurements and dimensions are approximate.

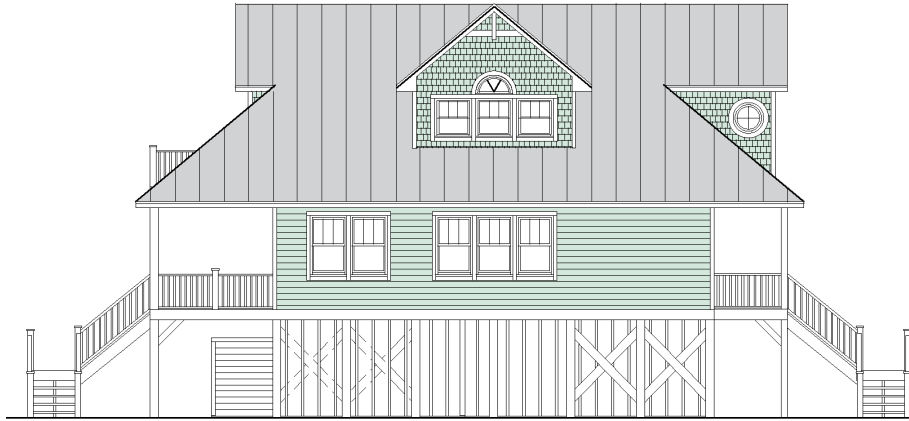
CAPE POINT 2429-6E

2,429.4 to 2,838.1 Square Feet Living Area
36'-0" wide x 52'-0" deep x 35'-0" high

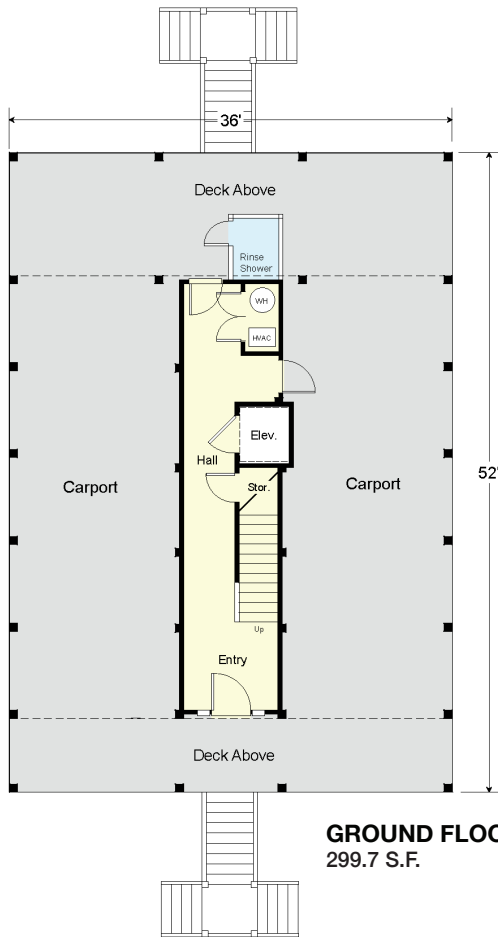
Standard Ground Floor	299.7 S.F.
Optional Ground Floor	708.4 S.F.
1st Floor	1,296.0 S.F.
2nd Floor	833.7 S.F.
Standard Total Area	2,429.4 S.F.
Optional Total Area	2,838.1 S.F.

4 to 6 Bedrooms
3 1/2 to 4 1/2 Baths
Elevator

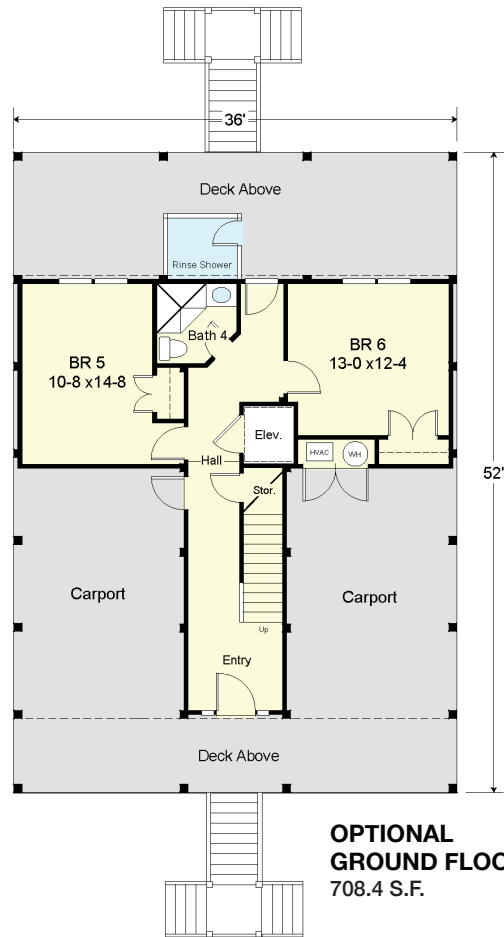
CAPE POINT 2429-6E



LEFT SIDE



GROUND FLOOR PLAN
299.7 S.F.



OPTIONAL GROUND FLOOR PLAN
708.4 S.F.

COASTAL DESIGNS

cottages for coastal living

web: coastaldesigns.com
email: designer@coastaldesigns.com

Copyright © 2003-2024, all rights reserved by Coastal Designs. This plan depicts a sketch plan, designer reserves the right to make changes and modifications for improvements. Measurements and dimensions are approximate.

CAPE POINT 2429-6E

2,429.4 to 2,838.1 Square Feet Living Area
36'-0" wide x 52'-0" deep x 35'-0" high

Standard Ground Floor	299.7 S.F.
Optional Ground Floor	708.4 S.F.
1st Floor	1,296.0 S.F.
2nd Floor	833.7 S.F.
Standard Total Area	2,429.4 S.F.
Optional Total Area	2,838.1 S.F.

4 to 6 Bedrooms
3 1/2 to 4 1/2 Baths
Elevator