

WRIGHTSVILLE 1934-4



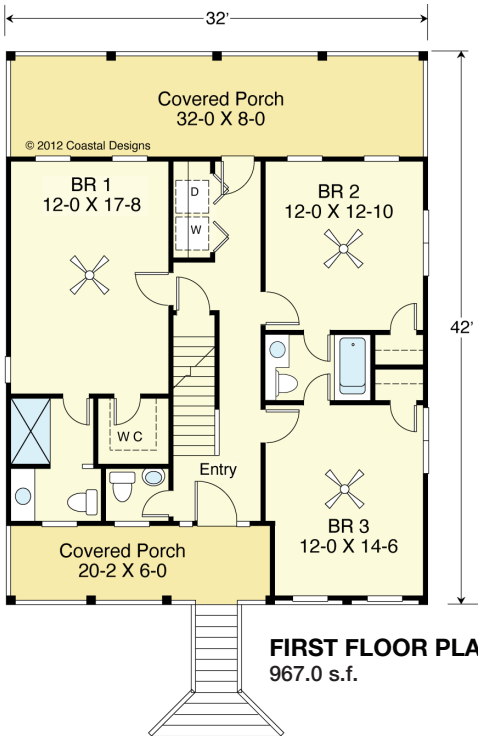
FRONT

© 2012 Coastal Designs

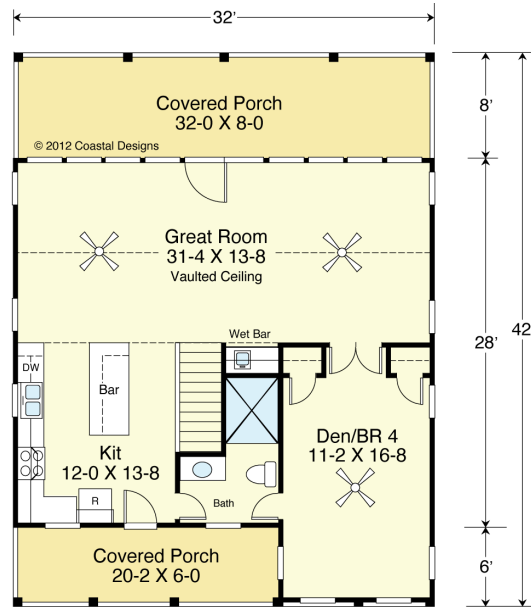


RIGHT SIDE

© 2012 Coastal Designs



FIRST FLOOR PLAN
967.0 s.f.



SECOND FLOOR PLAN
967.0 s.f.

COASTAL DESIGNS

cottages for coastal living

web: coastaldesigns.com
email: designer@coastaldesigns.com

Copyright © 2003-2024, all rights reserved by Coastal Designs. This plan depicts a sketch plan, designer reserves the right to make changes and modifications for improvements. Measurements and dimensions are approximate.

WRIGHTSVILLE 1934-4

1,934 Square Feet Living Area
32'-0" wide x 42'-0" deep x 38'-2" high

Ground Floor (Unheated)	170.0 S.F.
1st Floor	967.0 S.F.
2nd Floor	967.0 S.F.
Total	1,934.0 S.F.

4 Bedrooms
3 1/2 Baths
Garage/Carport
Accessible from
Two Sides

WRIGHTSVILLE 1934-4



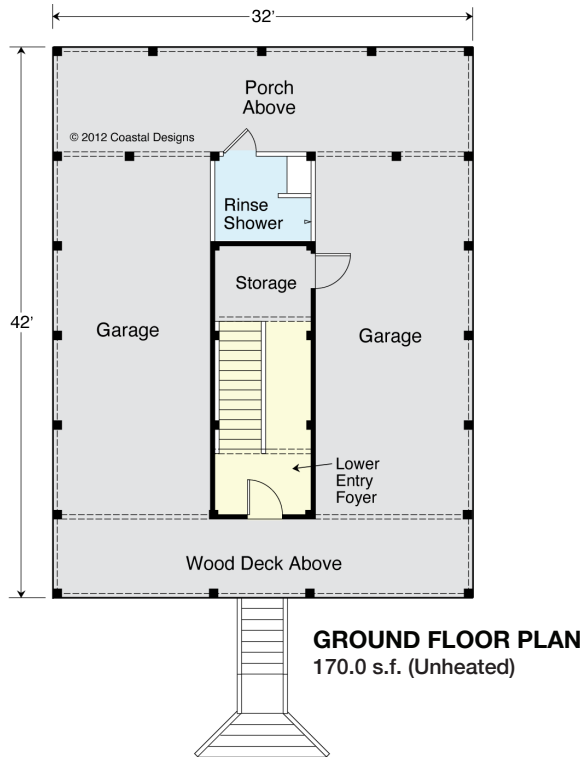
STREET FRONT

© 2012 Coastal Designs



LEFT SIDE

© 2012 Coastal Designs



GROUND FLOOR PLAN
170.0 s.f. (Unheated)

COASTAL DESIGNS

cottages for coastal living

web: coastaldesigns.com
email: designer@coastaldesigns.com

Copyright © 2003-2024, all rights reserved by Coastal Designs. This plan depicts a sketch plan, designer reserves the right to make changes and modifications for improvements. Measurements and dimensions are approximate.

WRIGHTSVILLE 1934-4

1,934 Square Feet Living Area
32'-0" wide x 42'-0" deep x 38'-2" high

Ground Floor (Unheated)	170.0 S.F.
1st Floor	967.0 S.F.
2nd Floor	967.0 S.F.
Total	1,934.0 S.F.

4 Bedrooms
3 1/2 Baths
Garage/Carport
Accessible from Two Sides