

CEDAR POINT 1898-3

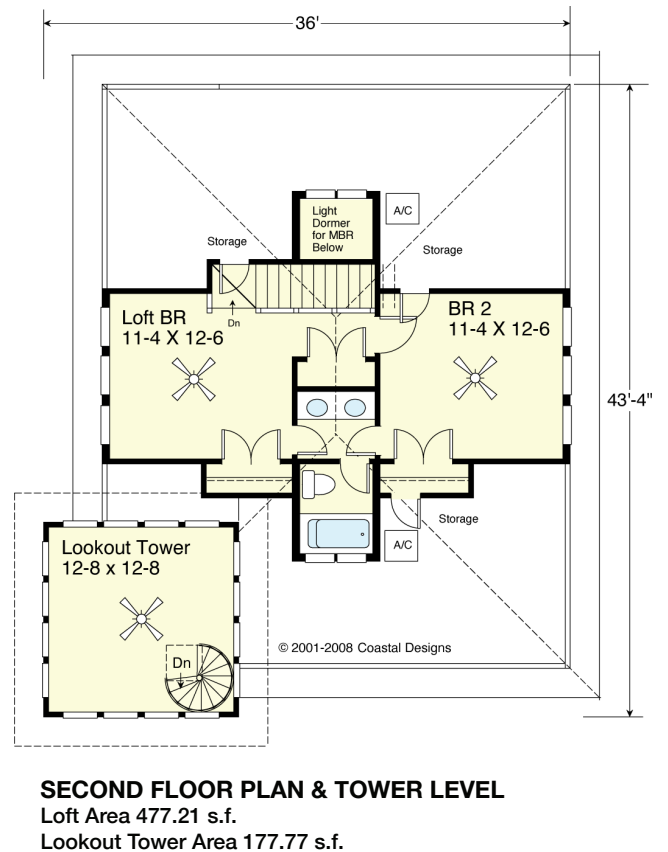
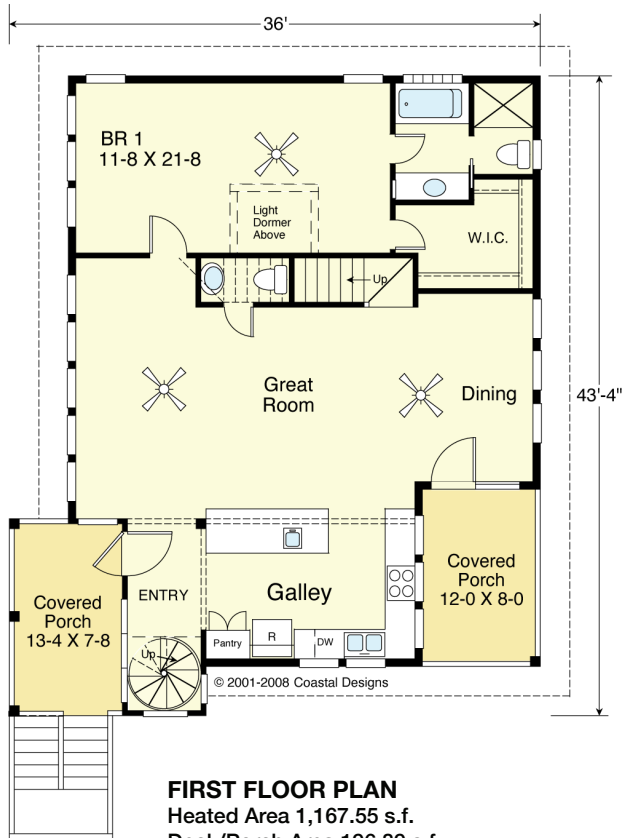


FRONT

© 2001-2008 Coastal Designs



RIGHT SIDE



COASTAL DESIGNS

cottages for coastal living

web: coastaldesigns.com
 email: designer@coastaldesigns.com

Copyright © 2003-2024, all rights reserved by Coastal Designs.
 This plan depicts a sketch plan, designer reserves the right to make changes and modifications for improvements. Measurements and dimensions are approximate.

CEDAR POINT 1898-3

1,898.07 Square Feet Living Area
 36'-0" wide x 43'-4" deep x 35'-0" high

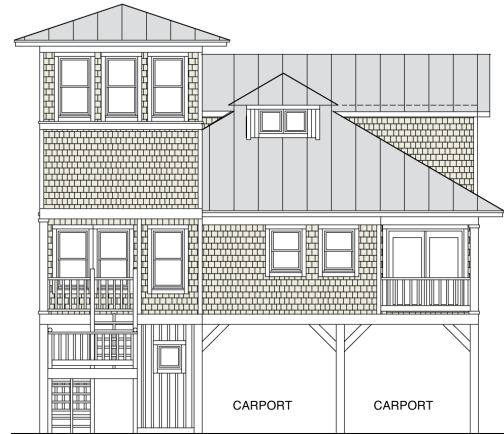
Ground Floor	75.54 S.F.	3 Bedrooms 2 1/2 Baths Optional Garage or Carport
1st Floor	1,167.55 S.F.	
2nd Floor	477.21 S.F.	
Tower	177.77 S.F.	
Total Area	1,898.07 S.F.	

CEDAR POINT 1898-3

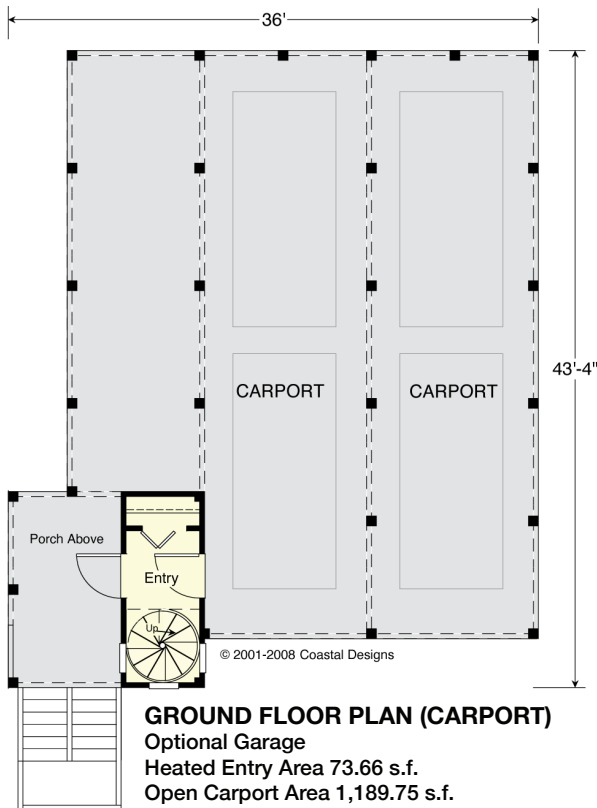


REAR

© 2001-2008 Coastal Designs



LEFT SIDE



Patterned after an old Coast Guard Station now in Cedar Point, North Carolina. The original plan, called a "Southern Style," was built for the Bogue Inlet Life-Saving Station in 1904, designed by the Coast Guard's last architect, Victor Mendleheff. This classic Station is still clad in its original weathered grey cedar shingles, still doing duty as a place of refuge.

COASTAL DESIGNS

cottages for coastal living

web: coastaldesigns.com
 email: designer@coastaldesigns.com

Copyright © 2003-2024, all rights reserved by Coastal Designs. This plan depicts a sketch plan, designer reserves the right to make changes and modifications for improvements. Measurements and dimensions are approximate.

CEDAR POINT 1898-3

1,898.07 Square Feet Living Area
 36'-0" wide x 43'-4" deep x 35'-0" high

Ground Floor	75.54 S.F.	3 Bedrooms 2 1/2 Baths Optional Garage or Carport
1st Floor	1,167.55 S.F.	
2nd Floor	477.21 S.F.	
Tower	177.77 S.F.	
Total Area	1,898.07 S.F.	