

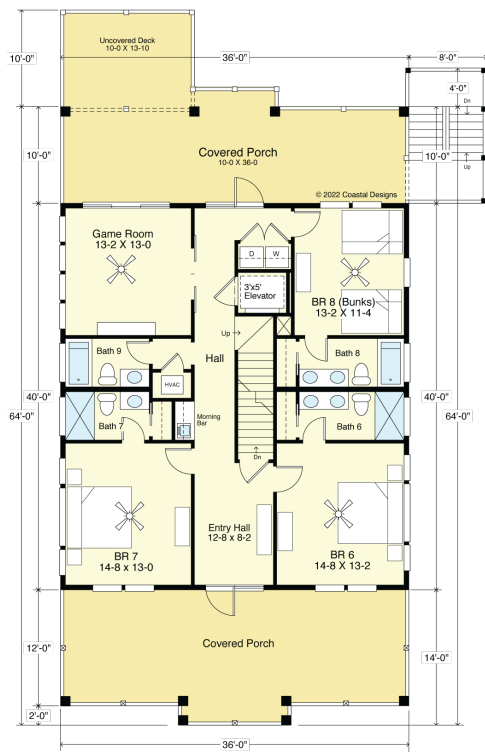
OCEAN VIEW 4485-8E



STREET FRONT

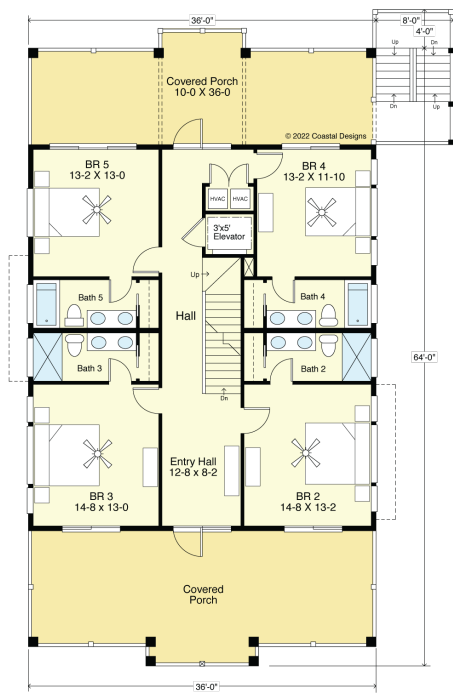


RIGHT SIDE



FIRST FLOOR PLAN

1,440.0 S.F.
9'-1 1/2" Ceilings



SECOND FLOOR PLAN

1,440.0 S.F.
9'-1 1/2" Ceilings

COASTAL DESIGNS

cottages for coastal living

web: coastaldesigns.com
email: designer@coastaldesigns.com

Copyright © 2003-2024, all rights reserved by Coastal Designs.
This plan depicts a sketch plan, designer reserves the right to make changes and modifications for improvements. Measurements and dimensions are approximate.

OCEAN VIEW 4485-8E

4,485.3 Square Feet Living Area
46'-0" wide x 74'-0" deep x 47'-7" high

Ground Floor	288.4 S.F.	8 Bedrooms
1st Floor	1,440.0 S.F.	9 1/2 Baths
2nd Floor	1,440.0 S.F.	Elevator
3rd Floor	1,605.3 S.F.	Game Room
Total	4,773.7 S.F.	

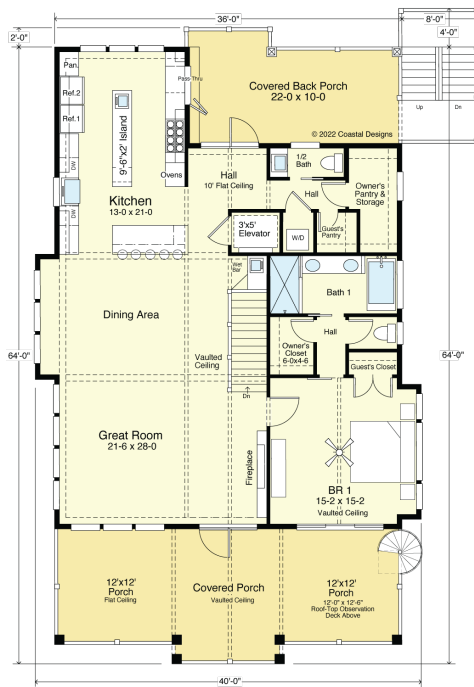
OCEAN VIEW 4485-8E



REAR



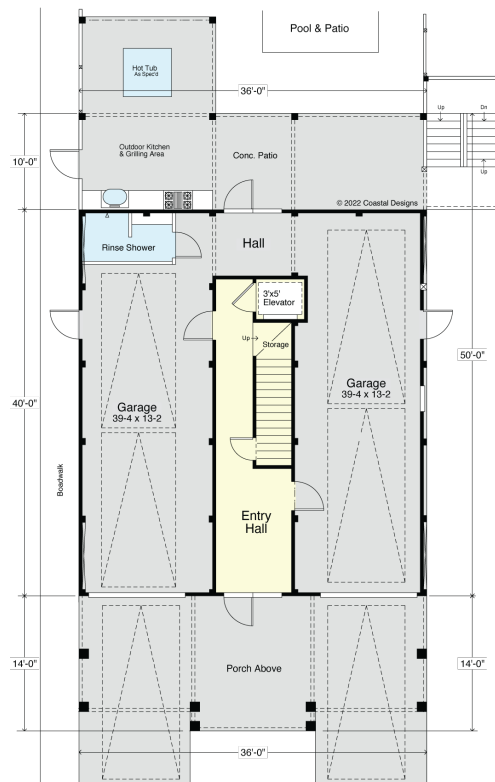
LEFT SIDE



THIRD FLOOR PLAN

1,605.3 S.F.

9'-1 1/2" + Vaulted Ceilings



GROUND FLOOR PLAN

288.4 S.F. Enclosed Foyer w/ 9' Ceiling Height

1,151.6 S.F. Garage/Carport Areas

1,440.0 S.F. Total Enclosed Area

2,257.3 S.F. "Footprint" Including Decks

COASTAL DESIGNS
cottages for coastal living

web: coastaldesigns.com

email: designer@coastaldesigns.com

Copyright © 2003-2024, all rights reserved by Coastal Designs.
This plan depicts a sketch plan, designer reserves the right to make changes and modifications for improvements. Measurements and dimensions are approximate.

OCEAN VIEW 4485-8E

4,485.3 Square Feet Living Area

46'-0" wide x 74'-0" deep x 47'-7" high

Ground Floor	288.4 S.F.	8 Bedrooms
1st Floor	1,440.0 S.F.	9 1/2 Baths
2nd Floor	1,440.0 S.F.	Elevator
3rd Floor	1,605.3 S.F.	Game Room
Total	4,773.7 S.F.	