

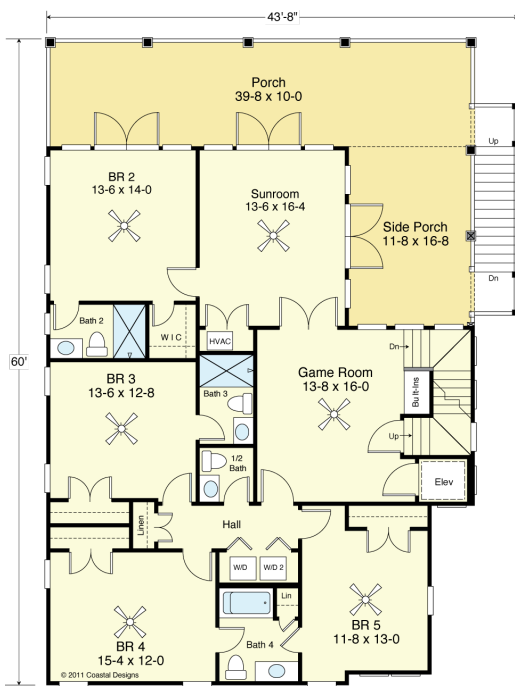
WATERWAY 3889-5E



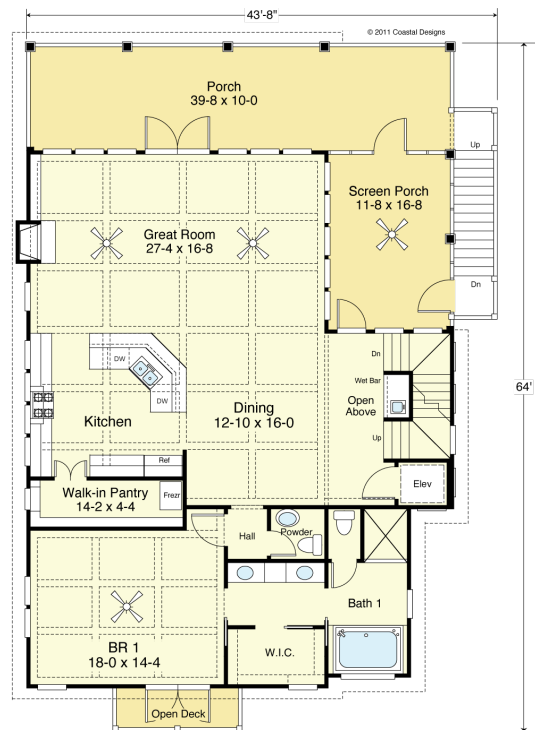
WATER FRONT



RIGHT SIDE



FIRST FLOOR PLAN
9'-1 1/2" Flat Ceilings
Living Area 1,714.5 S.F.



SECOND FLOOR PLAN
10' Flat Ceilings
Living Area 1,714.5 S.F.

COASTAL DESIGNS

cottages for coastal living

web: coastaldesigns.com
email: designer@coastaldesigns.com

Copyright © 2003-2024, all rights reserved by Coastal Designs. This plan depicts a sketch plan, designer reserves the right to make changes and modifications for improvements. Measurements and dimensions are approximate.

WATERWAY 3889-5E

3,888.9 Square Feet Living Area
43'-8" wide x 64'-0" deep x 38'-0" high

Ground Floor	258.0 S.F.
1st Floor	1,714.5 S.F.
2nd Floor	1,714.5 S.F.
3rd Floor	201.9 S.F.
Total Living	3,888.9 S.F.

- 5 Bedrooms
- 4 Full Baths
- 2 Half Baths
- Elevator
- Lookout Tower

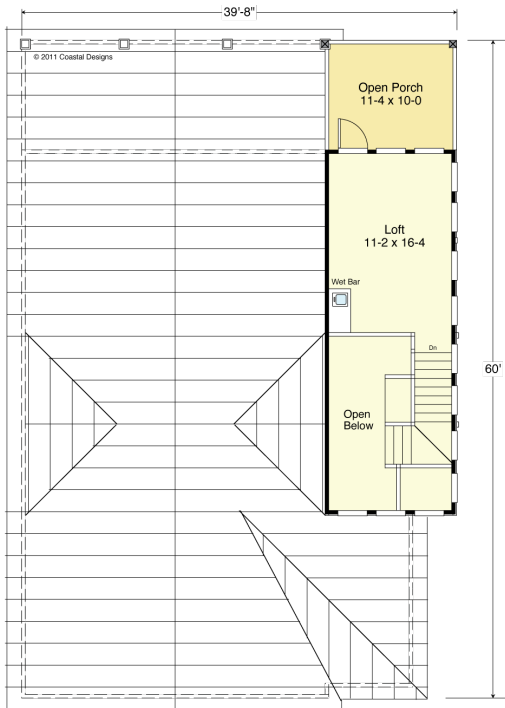
WATERWAY 3889-5E



STREET FRONT

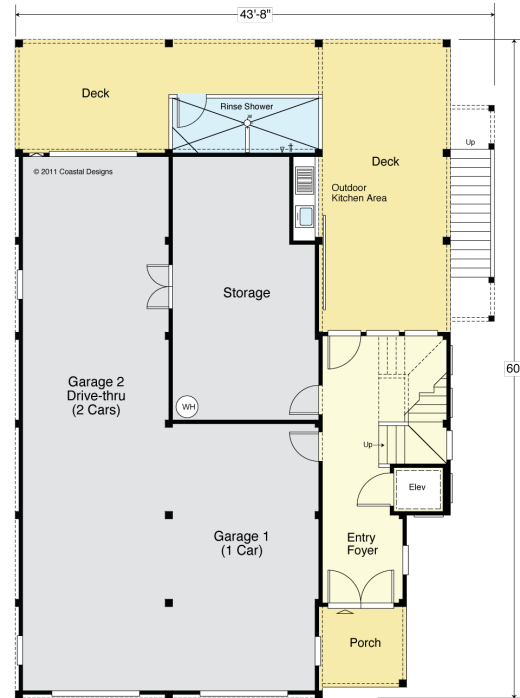


LEFT SIDE



THIRD FLOOR (LOFT) PLAN

7'-6" Flat Ceilings
 Enclosed Area 394.4 S.F.
 Living Area 201.9 S.F.
 Open Porch 120.0 S.F.



GROUND FLOOR PLAN

8'-1 1/2" Flat Ceilings
 Entry Area 258.0 S.F.
 Garage 1,050.0 S.F.
 Storage 350.0 S.F.
 Total Covered Area 1,658.0 S.F.

COASTAL DESIGNS

cottages for coastal living

web: coastaldesigns.com
 email: designer@coastaldesigns.com

Copyright © 2003-2024, all rights reserved by Coastal Designs.
 This plan depicts a sketch plan, designer reserves the right to make changes and modifications for improvements. Measurements and dimensions are approximate.

WATERWAY 3889-5E

3,888.9 Square Feet Living Area
 43'-8" wide x 64'-0" deep x 38'-0" high

Ground Floor	258.0 S.F.	5 Bedrooms 4 Full Baths 2 Half Baths Elevator Lookout Tower
1st Floor	1,714.5 S.F.	
2nd Floor	1,714.5 S.F.	
3rd Floor	201.9 S.F.	
Total Living	3,888.9 S.F.	