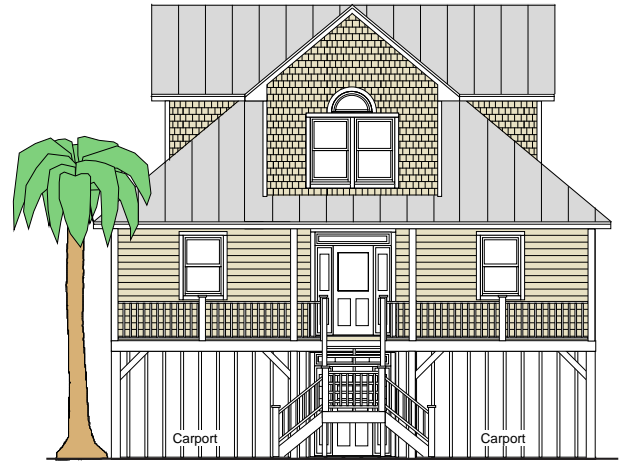


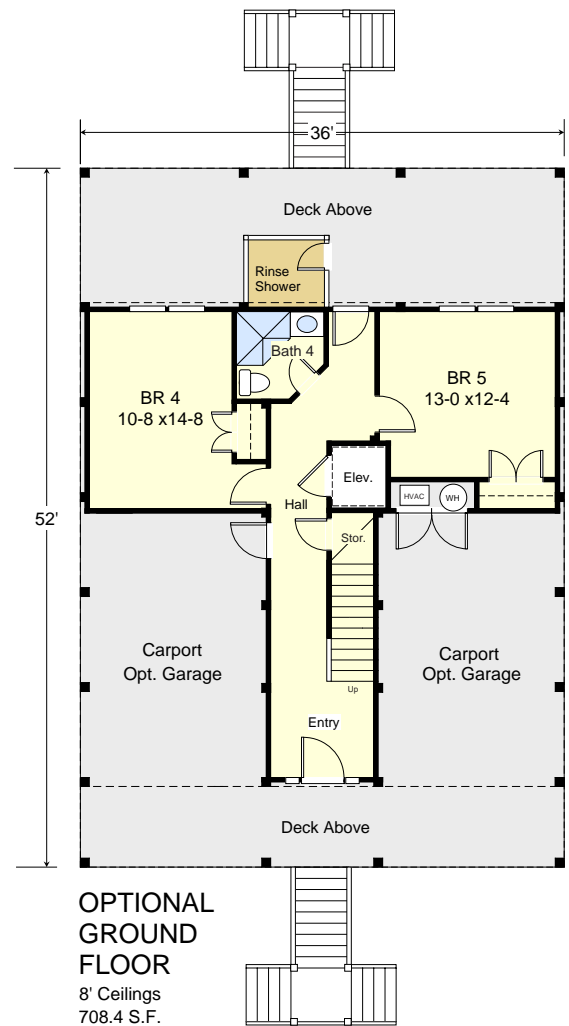
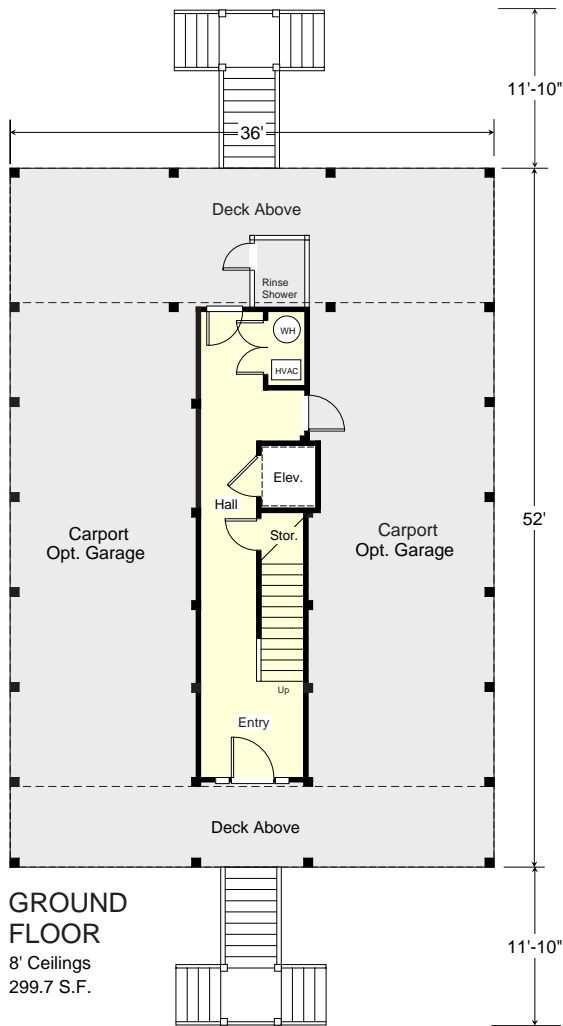
# CAPE POINT 2429-5E



REAR



STREET FRONT



## COASTAL DESIGNS

cottages for coastal living

www.coastaldesigns.com  
PO Box 379 · Wrightsville Beach · NC · 28480 ·  
910-616-6905

Copyright © 2005-2023, Coastal Designs

This plan depicts a sketch plan, designer reserves the right to make changes and modifications for improvements. Measurements and dimensions are approximate.

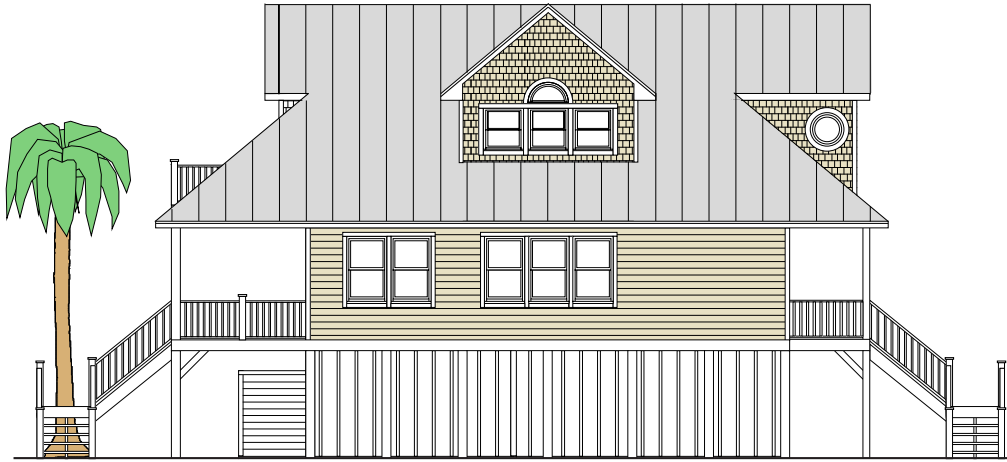
## CAPE POINT 2429-5E

2,429.4 to 2,838.1 square feet living area w/ Elevator  
3-5 bedrooms, 3 full & 1 half baths,  
Garage or Carport Ground Floor Option  
36'-0" wide x 52' deep x 34'-10" high

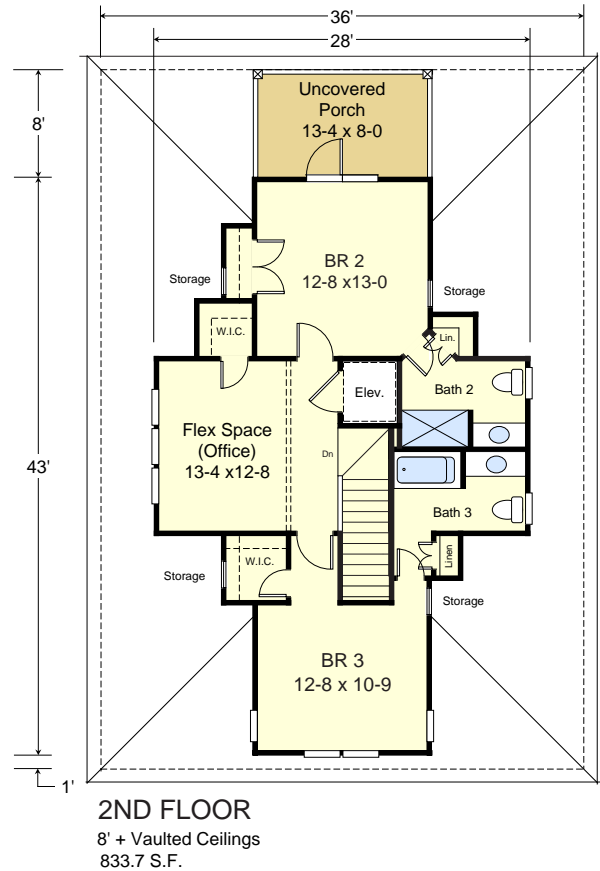
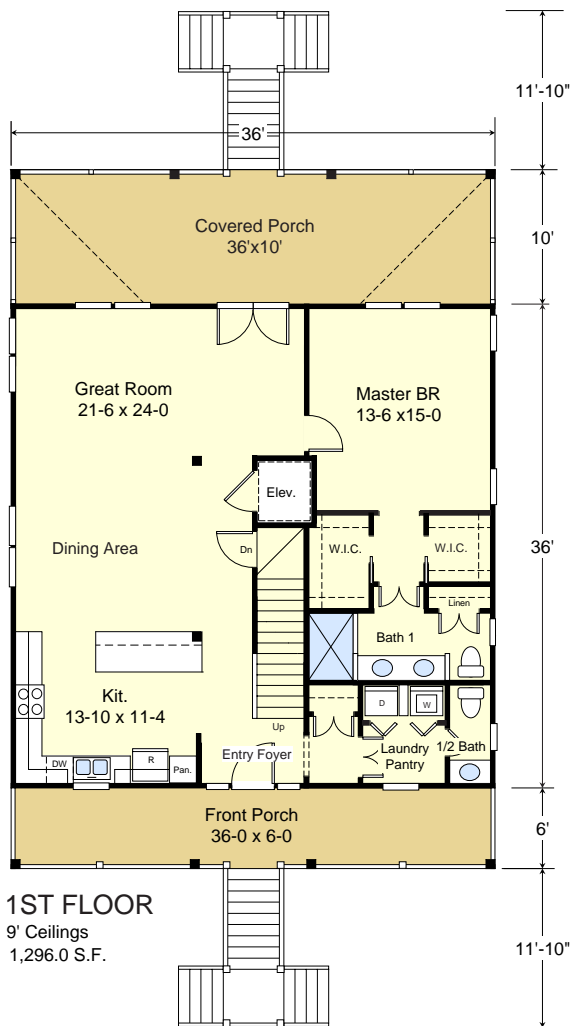
Living Areas:

Ground Floor =	299.7 S.F. To 708.4 S.F.
First Floor =	1,296.0 S.F.
Second Floor =	833.7 S.F.
Total =	2,429.4 S.F. To 2,838.1 S.F.
Porches =	682.7 S.F.
Carport or Optional Garage	

# CAPE POINT 2429-5E



LEFT SIDE



## COASTAL DESIGNS

cottages for coastal living

www.coastal designs.com

PO Box 379 · Wrightsville Beach · NC · 28480 ·

910-616-6905

Copyright © 2005-2023, Coastal Designs

This plan depicts a sketch plan, designer reserves the right to make changes and modifications for improvements. Measurements and dimensions are approximate.

## CAPE POINT 2429-5E

2,429.4 to 2,838.1 square feet living area w/ Elevator

3-5 bedrooms, 3 full & 1 half baths,

Garage or Carport Ground Floor Option

36'-0" wide x 52' deep x 34'-10" high

Living Areas:

Ground Floor = 299.7 S.F. To 708.4 S.F.

First Floor = 1,296.0 S.F.

Second Floor = 833.7 S.F.

Total = 2,429.4 S.F. To 2,838.1 S.F.

Porches = 682.7 S.F.

Carport or Optional Garage