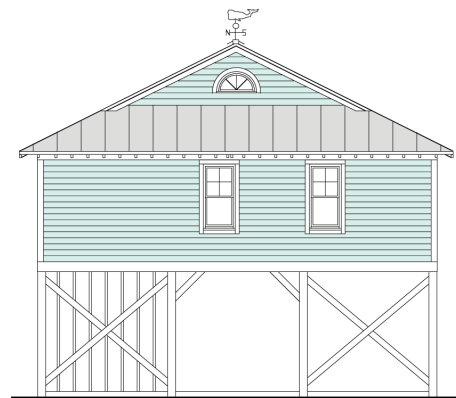


PINFISH 1825-3



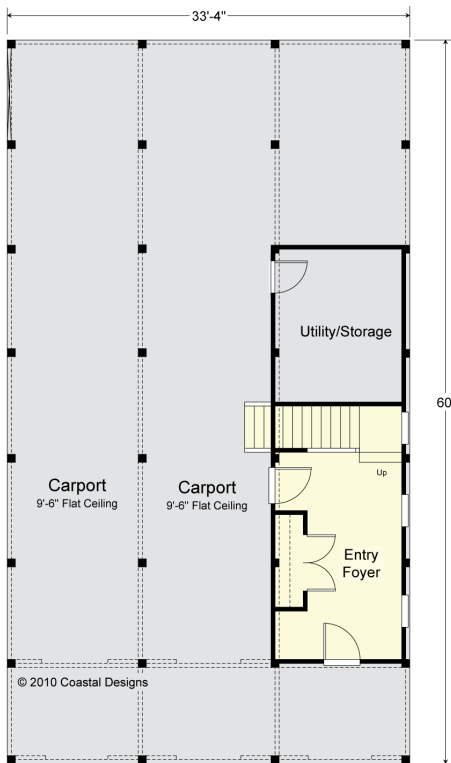
FRONT

© 2010 Coastal Designs



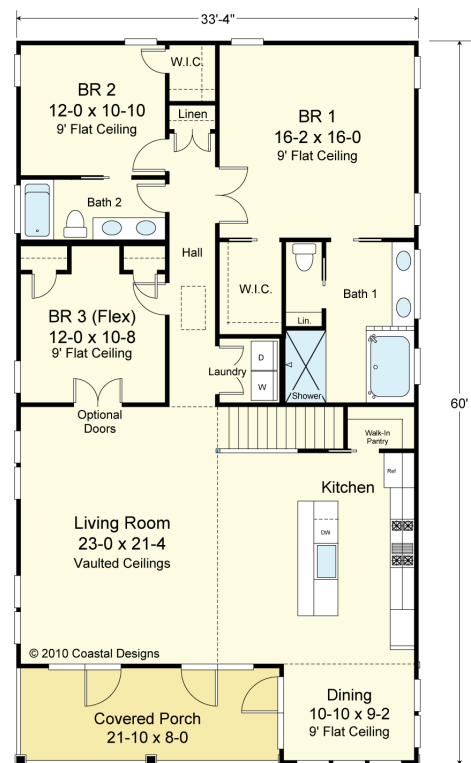
REAR

© 2010 Coastal Designs



GROUND FLOOR PLAN

Living Area (Foyer/Stairs) 241.9 s.f.
 Storage/Utility 145.2 s.f.
 Total Enclosed Area 387.1 s.f.
 9' Ceiling Heights & 4" Exterior Walls



FIRST FLOOR PLAN

Living Area 1,825.0 s.f.
 9' Ceiling Heights & 4" Exterior Walls
 Footprint 2,000 s.f.

COASTAL DESIGNS

cottages for coastal living

web: coastaldesigns.com
 email: designer@coastaldesigns.com

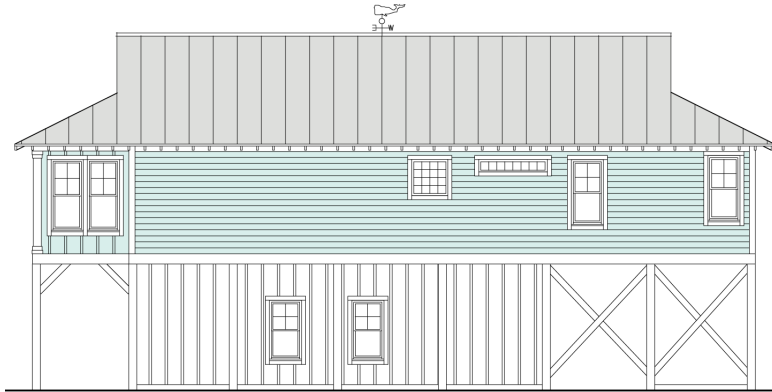
Copyright © 2003-2024, all rights reserved by Coastal Designs.
 This plan depicts a sketch plan, designer reserves the right to make changes and modifications for improvements. Measurements and dimensions are approximate.

PINFISH 1825-3

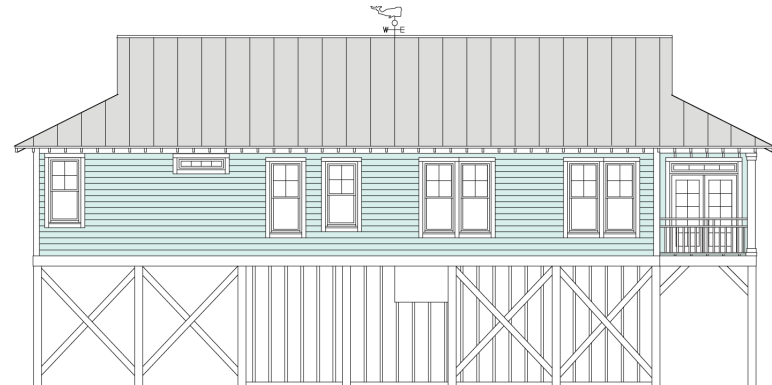
1,825 Square Feet Living Area
 33'-48" wide x 60'-0" deep x 29'-9" high

Ground Floor	241.9 S.F.	3 Bedrooms 2 Baths
1st Floor	1,825.0 S.F.	
Total Enclosed Area	2,067.2 S.F.	

PINFISH 1825-3



RIGHT SIDE



LEFT SIDE

COASTAL DESIGNS

cottages for coastal living

web: coastaldesigns.com

email: designer@coastaldesigns.com

Copyright © 2003-2024, all rights reserved by Coastal Designs. This plan depicts a sketch plan, designer reserves the right to make changes and modifications for improvements. Measurements and dimensions are approximate.

PINFISH 1825-3

1,825 Square Feet Living Area
33'-48" wide x 60'-0" deep x 29'-9" high

Ground Floor

241.9 S.F.

3 Bedrooms

1st Floor

1,825.0 S.F.

2 Baths

Total Enclosed Area

2,067.2 S.F.