

WATERWAY 3889-5E



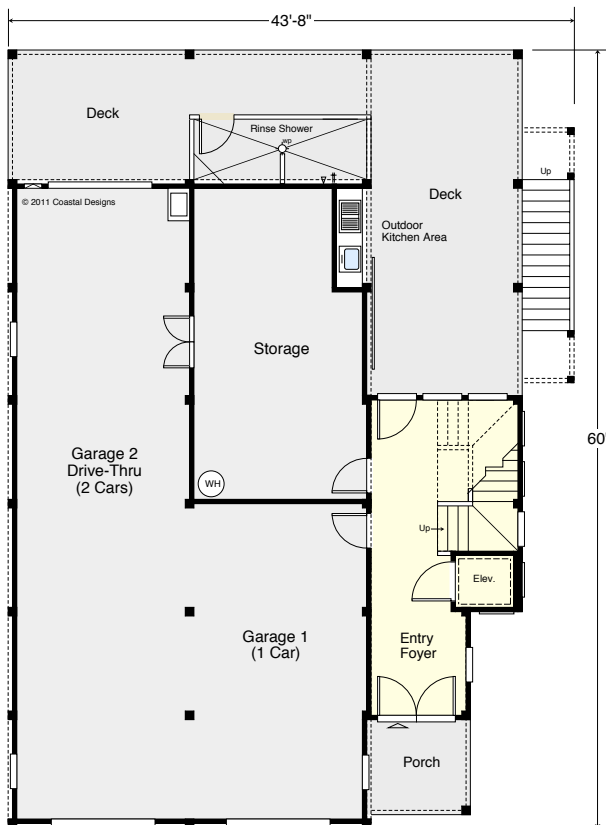
RIGHT SIDE

© 2011 Coastal Designs



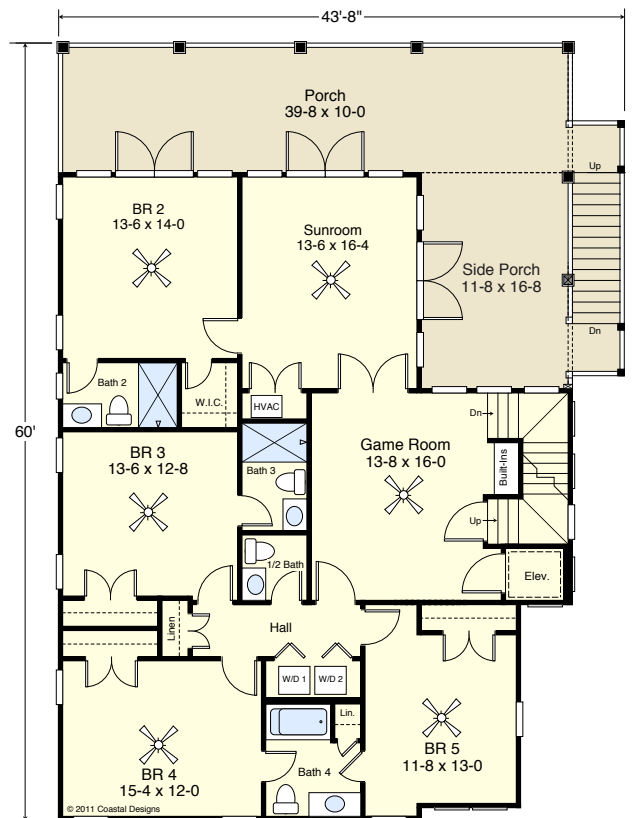
WATER FRONT

© 2011 Coastal Designs



Ground Floor Plan

Entry Area = 258.0 SF
 Garage = 1,050.0 SF
 Stor. = 350.0 SF
TOTAL COVERED AREA = 1,658.0 SF
 8'-1 1/2" Flat Ceiling Height



1st Floor Plan

Living Area = 1,714.5 s.f.
 9'-1 1/2" Flat Ceilings



**COASTAL
DESIGNS**

cottages for coastal living

www.coastaldesigns.com
 PO Box 379 · Wrightsville Beach · NC · 28480 ·
 910-616-6905

Copyright © 2011-2019, Coastal Designs

This plan depicts a sketch plan, designer reserves the right to make changes and modifications for improvements. Measurements and dimensions are approximate.

WATERWAY 3889-5E

3,888.9 square feet living area
 5 bedrooms, 4 baths + 2 1/2 baths, Elevator
 43'-8" wide x 64'-0" deep x 40'-0" high

Ground Floor	258.0 SF
First Floor	1,714.5 SF
Second Floor	1,714.5 SF
Third Floor (Tower)	1,588.0 SF
Total Living	3,888.9 SF

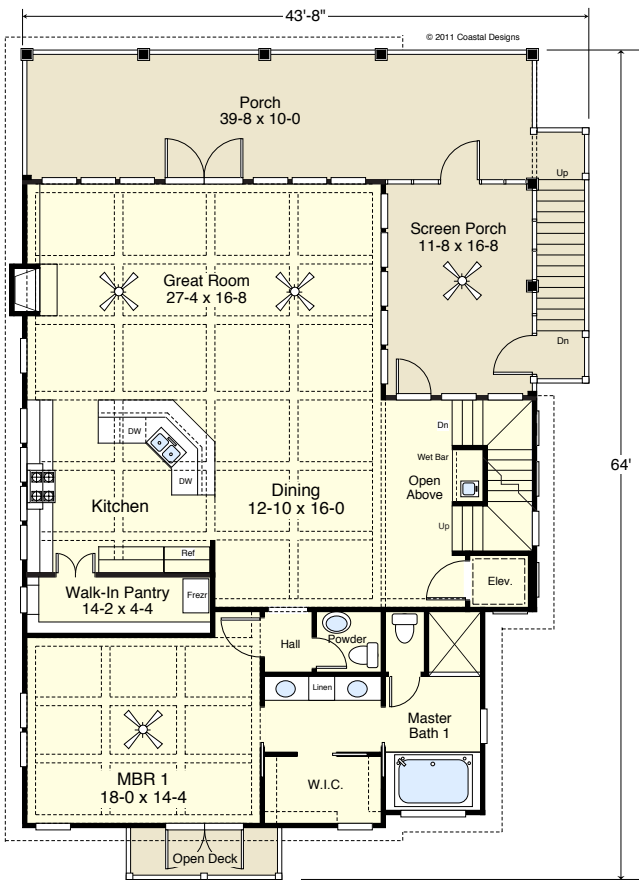
WATERWAY 3889-5E



ROAD FRONT

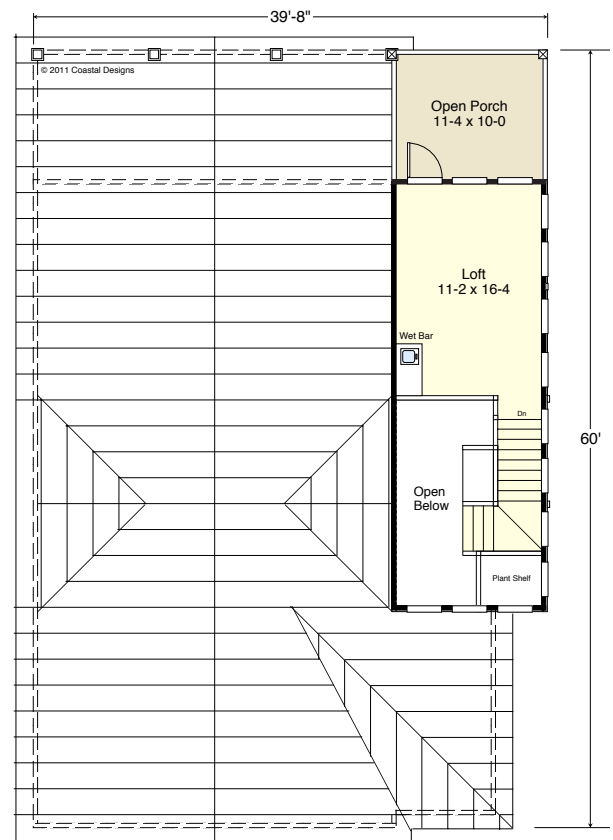


LEFT SIDE



2nd Floor Plan

Living Area = 1,714.5 s.f.
10'-0" Flat Ceilings



3rd Floor- Loft

Enclosed Area = 394.4 SF
Living Area = 201.9 s.f.
Open Porch = 120.0 SF
7'-6" Flat Ceilings



**COASTAL
DESIGNS**

cottages for coastal living

www.coastaldesigns.com
PO Box 379 · Wrightsville Beach · NC · 28480 ·
910-616-6905

Copyright © 2011-2019, Coastal Designs

This plan depicts a sketch plan, designer reserves the right to make changes and modifications for improvements. Measurements and dimensions are approximate.

WATERWAY 3889-5E

3,888.9 square feet living area
5 bedrooms, 4 baths + 2 1/2 baths, Elevator
43'-8" wide x 64'-0" deep x 40'-0" high

Ground Floor	258.0 SF
First Floor	1,714.5 SF
Second Floor	1,714.5 SF
Third Floor (Tower)	1,588.0 SF
Total Living	3,888.9 SF