

# HOLDEN BEACH 1744-4E



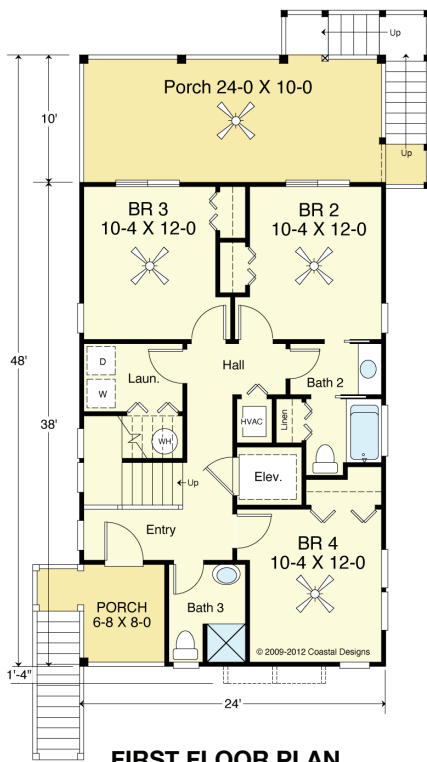
**WATER FRONT**

© 2009-2012 Coastal Designs

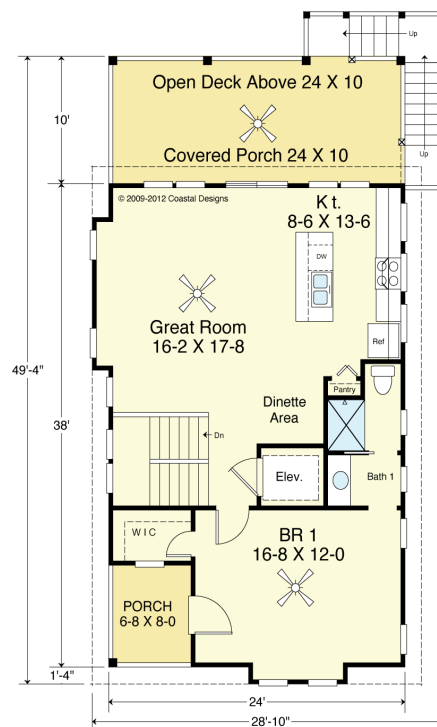


**RIGHT SIDE**

© 2009-2012 Coastal Designs



**FIRST FLOOR PLAN**  
858.7 S.F.  
8' Ceilings



**SECOND FLOOR PLAN**  
885.3 S.F.  
9' Ceilings

## COASTAL DESIGNS

cottages for coastal living

web: [coastaldesigns.com](http://coastaldesigns.com)  
email: [designer@coastaldesigns.com](mailto:designer@coastaldesigns.com)

Copyright © 2003-2024, all rights reserved by Coastal Designs.  
This plan depicts a sketch plan, designer reserves the right to make changes and modifications for improvements. Measurements and dimensions are approximate.

## HOLDEN BEACH 1744-4E

1,744 Square Feet Living Area  
28'-10" wide x 58'-10" deep x 34'-10" high

|            |              |                                   |
|------------|--------------|-----------------------------------|
| 1st Floor  | 858.7 S.F.   | 4 Bedrooms<br>3 Baths<br>Elevator |
| 2nd Floor  | 885.3 S.F.   |                                   |
| Total Area | 1,744.0 S.F. |                                   |

# HOLDEN BEACH 1744-4E



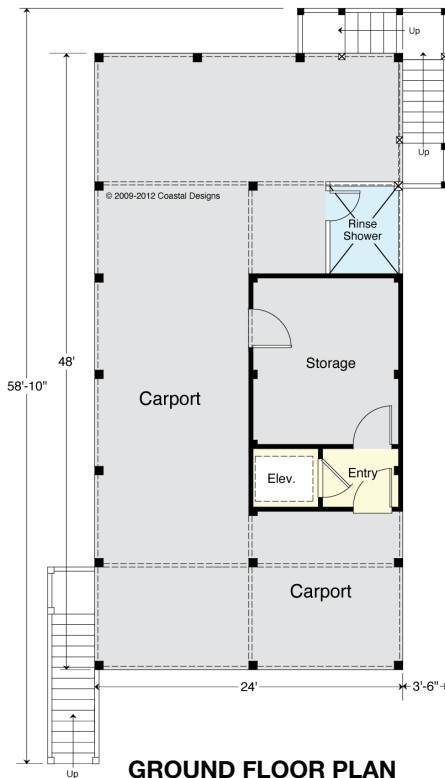
**STREET FRONT**

© 2006-2012 Coastal Designs



**LEFT SIDE**

© 2006-2012 Coastal Designs



**GROUND FLOOR PLAN**  
222.2 S.F. (Enclosed)  
8' Ceilings

## COASTAL DESIGNS

cottages for coastal living

web: [coastaldesigns.com](http://coastaldesigns.com)  
email: [designer@coastaldesigns.com](mailto:designer@coastaldesigns.com)

Copyright © 2003-2024, all rights reserved by Coastal Designs.  
This plan depicts a sketch plan, designer reserves the right to make changes and modifications for improvements. Measurements and dimensions are approximate.

## HOLDEN BEACH 1744-4E

1,744 Square Feet Living Area  
28'-10" wide x 58'-10" deep x 34'-10" high

|            |              |                                   |
|------------|--------------|-----------------------------------|
| 1st Floor  | 858.7 S.F.   | 4 Bedrooms<br>3 Baths<br>Elevator |
| 2nd Floor  | 885.3 S.F.   |                                   |
| Total Area | 1,744.0 S.F. |                                   |