

# LAUREL 2800-5E



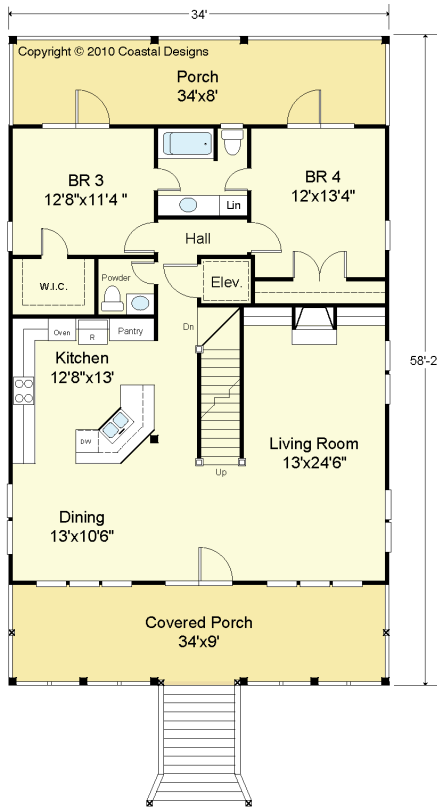
**STREET FRONT**

Copyright © 2010 Coastal Designs

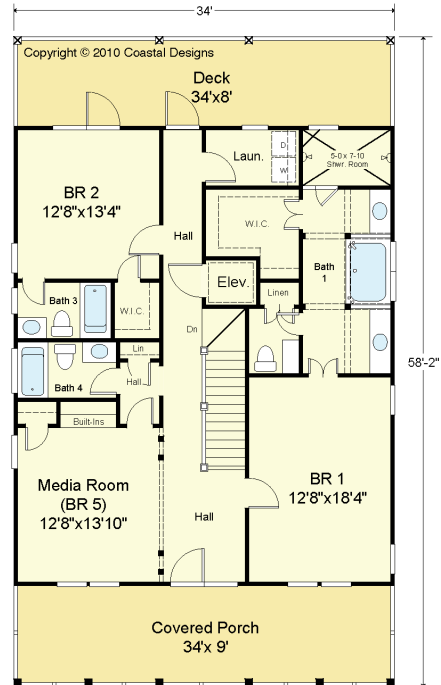


**RIGHT SIDE**

Copyright © 2010 Coastal Designs



**FIRST FLOOR PLAN**  
9' Ceilings



**SECOND FLOOR PLAN**  
9' Ceilings

## COASTAL DESIGNS

cottages for coastal living

web: [coastaldesigns.com](http://coastaldesigns.com)  
email: [designer@coastaldesigns.com](mailto:designer@coastaldesigns.com)

Copyright © 2003-2024, all rights reserved by Coastal Designs. This plan depicts a sketch plan, designer reserves the right to make changes and modifications for improvements. Measurements and dimensions are approximate.

## LAUREL 2800-5E

2,800 Square Feet Living Area  
34'-0" wide x 58'-2" deep x 38'-6" high

Ground Floor	1,236.7 S.F.
1st Floor	1,399.7 S.F.
2nd Floor	1,399.7 S.F.
Total Living	2,799.4 S.F.
Porches	1,136.0 S.F.
Garage	1,180.0 S.F.

5 Bedrooms  
4 1/2 Baths  
Elevator

# LAUREL 2800-5E



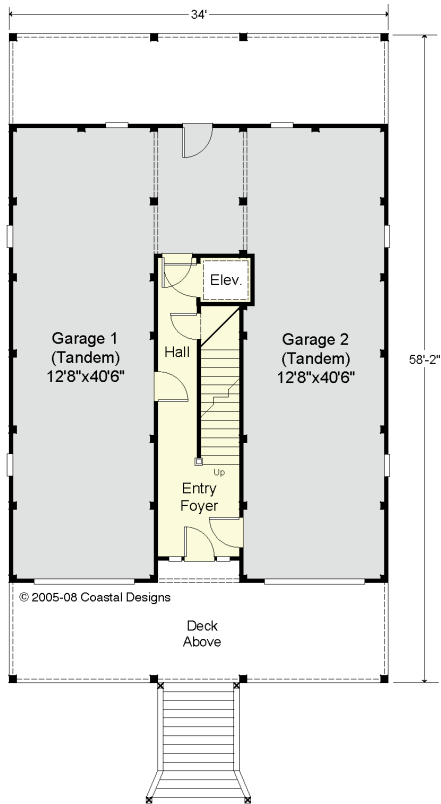
**REAR**

Copyright © 2010 Coastal Designs



**LEFT SIDE**

Copyright © 2010 Coastal Designs



**GROUND FLOOR PLAN**  
8' Ceilings

## COASTAL DESIGNS

cottages for coastal living

web: [coastaldesigns.com](http://coastaldesigns.com)  
email: [designer@coastaldesigns.com](mailto:designer@coastaldesigns.com)

Copyright © 2003-2024, all rights reserved by Coastal Designs.  
This plan depicts a sketch plan, designer reserves the right to make changes and modifications for improvements. Measurements and dimensions are approximate.

## LAUREL 2800-5E

2,800 Square Feet Living Area  
34'-0" wide x 58'-2" deep x 38'-6" high

Ground Floor	1,236.7 S.F.
1st Floor	1,399.7 S.F.
2nd Floor	1,399.7 S.F.
Total Living	2,799.4 S.F.
Porches	1,136.0 S.F.
Garage	1,180.0 S.F.

5 Bedrooms  
4 1/2 Baths  
Elevator