

# WRIGHTSVILLE 2016-4E



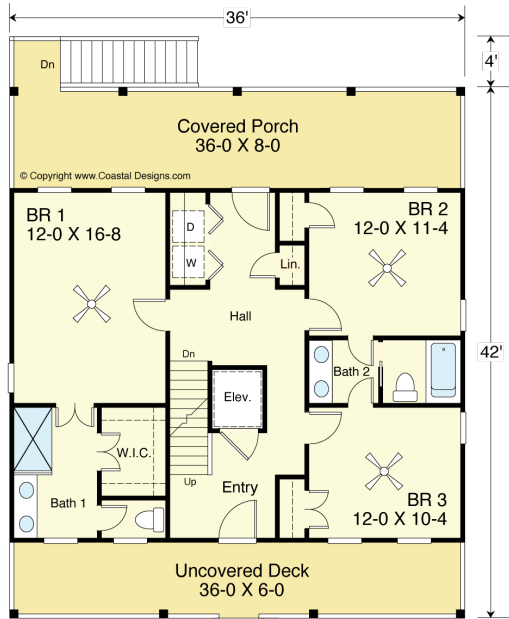
**WATER FRONT**

© Copyright www.Coastal Designs.com

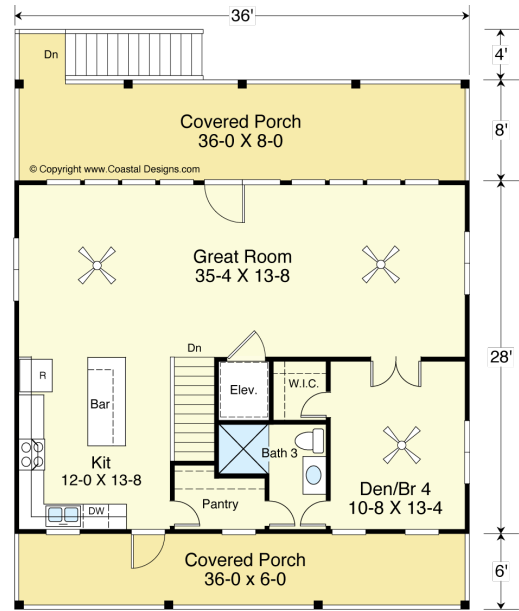


**RIGHT SIDE**

© Copyright www.Coastal Designs.com



**FIRST FLOOR PLAN**  
1,008 S.F.



**SECOND FLOOR PLAN**  
1,008 S.F.

## COASTAL DESIGNS

cottages for coastal living

web: [coastaldesigns.com](http://coastaldesigns.com)  
email: [designer@coastaldesigns.com](mailto:designer@coastaldesigns.com)

Copyright © 2003-2024, all rights reserved by Coastal Designs.  
This plan depicts a sketch plan, designer reserves the right to make changes and modifications for improvements. Measurements and dimensions are approximate.

## WRIGHTSVILLE 2016-4E

2,016 Square Feet Living Area  
36'-0" wide x 46'-0" deep x 38'-2" high

Ground Floor	240.0 S.F.	4 Bedrooms 3 Baths Elevator
1st Floor	1,008.0 S.F.	
2nd Floor	1,008.0 S.F.	
<b>Total</b>	<b>2,016.0 S.F.</b>	

# WRIGHTSVILLE 2016-4E



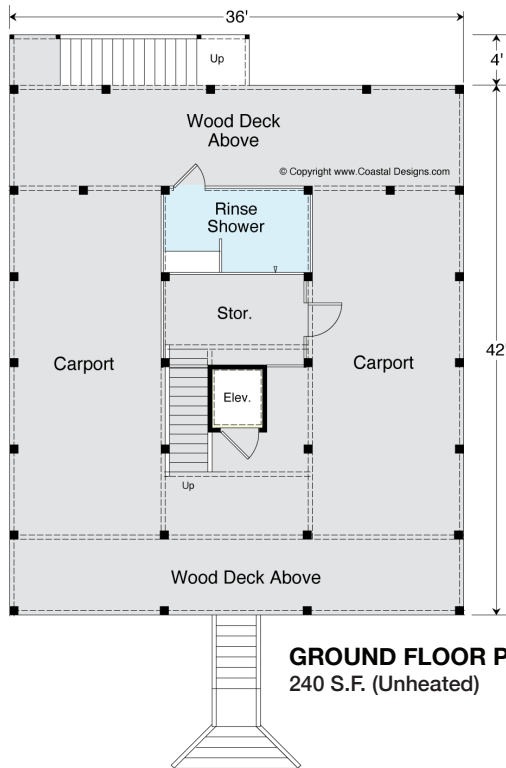
**STREET FRONT**

© Copyright www.Coastal Designs.com



**LEFT SIDE**

© Copyright www.Coastal Designs.com



**GROUND FLOOR PLAN**  
240 S.F. (Unheated)

## COASTAL DESIGNS

cottages for coastal living

web: [coastaldesigns.com](http://coastaldesigns.com)  
email: [designer@coastaldesigns.com](mailto:designer@coastaldesigns.com)

Copyright © 2003-2024, all rights reserved by Coastal Designs.  
This plan depicts a sketch plan, designer reserves the right to make changes and modifications for improvements. Measurements and dimensions are approximate.

## WRIGHTSVILLE 2016-4E

2,016 Square Feet Living Area  
36'-0" wide x 46'-0" deep x 38'-2" high

Ground Floor	240.0 S.F.	4 Bedrooms 3 Baths Elevator
1st Floor	1,008.0 S.F.	
2nd Floor	1,008.0 S.F.	
<b>Total</b>	<b>2,016.0 S.F.</b>	