

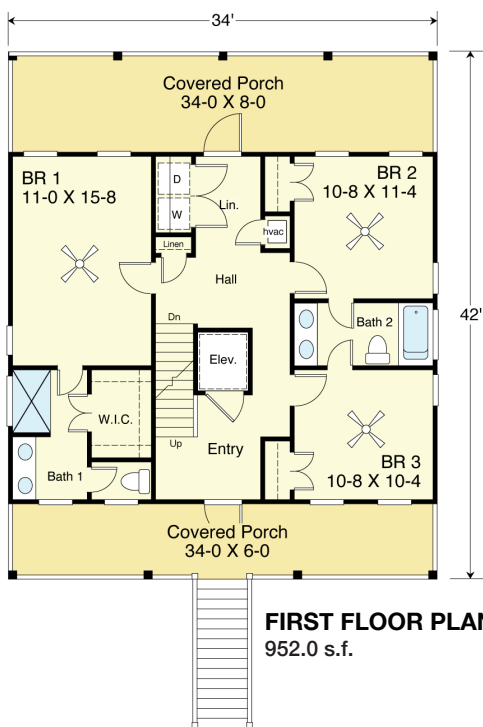
WRIGHTSVILLE 1904-4E



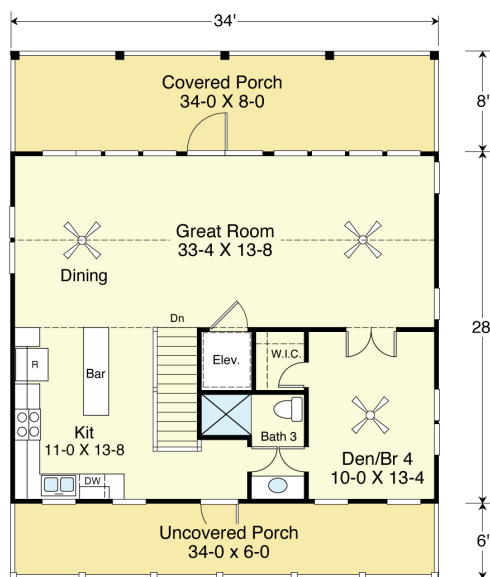
FRONT



RIGHT SIDE



FIRST FLOOR PLAN
952.0 s.f.



SECOND FLOOR PLAN
952.0 s.f.

COASTAL DESIGNS

cottages for coastal living

web: coastaldesigns.com
email: designer@coastaldesigns.com

Copyright © 2003-2024, all rights reserved by Coastal Designs.
This plan depicts a sketch plan, designer reserves the right to make changes and modifications for improvements. Measurements and dimensions are approximate.

WRIGHTSVILLE 1904-4E

1,904 Square Feet Living Area
34'-0" wide x 42'-0" deep x 38'-6" high

Ground Floor	240.0 S.F.	4 Bedrooms
1st Floor	952.0 S.F.	3 Baths
2nd Floor	952.0 S.F.	3 Levels
Total	1,904.0 S.F.	Elevator

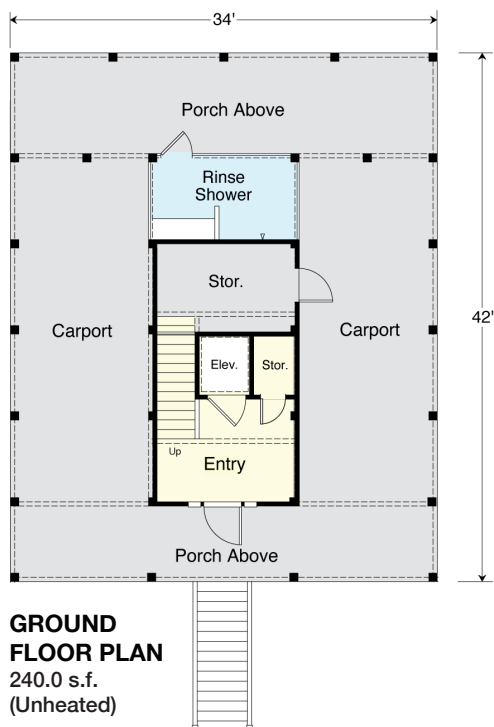
WRIGHTSVILLE 1904-4E



STREET FRONT



LEFT SIDE



COASTAL DESIGNS

cottages for coastal living

web: coastaldesigns.com
email: designer@coastaldesigns.com

Copyright © 2003-2024, all rights reserved by Coastal Designs.
This plan depicts a sketch plan, designer reserves the right to make changes and modifications for improvements. Measurements and dimensions are approximate.

WRIGHTSVILLE 1904-4E

1,904 Square Feet Living Area
34'-0" wide x 42'-0" deep x 38'-6" high

Ground Floor	240.0 S.F.	4 Bedrooms
1st Floor	952.0 S.F.	3 Baths
2nd Floor	952.0 S.F.	3 Levels
Total	1,904.0 S.F.	Elevator