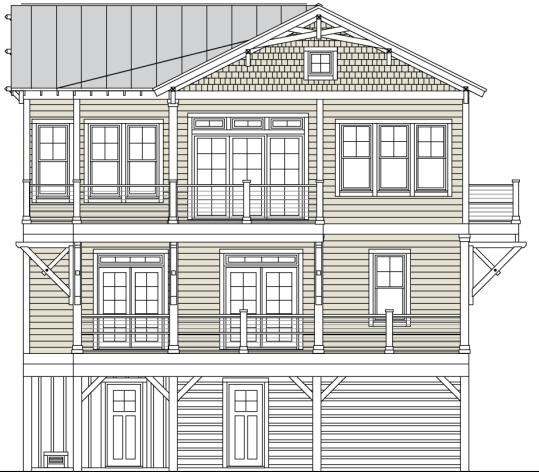


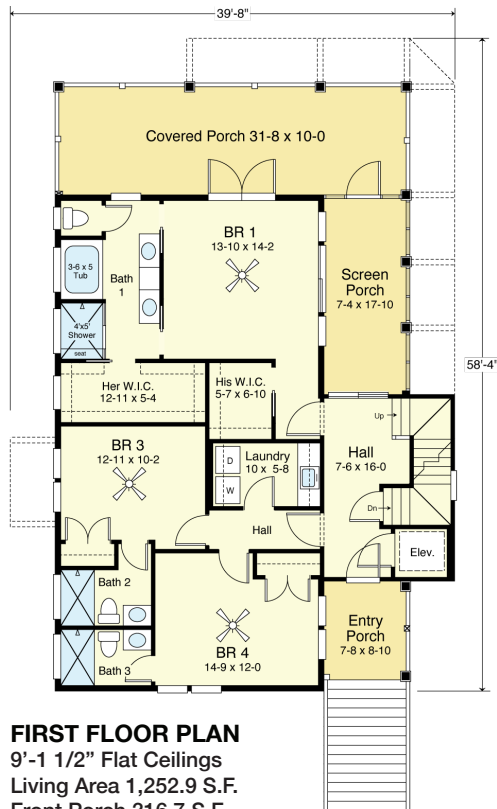
SALTSPRAY LANDING 2964-4E



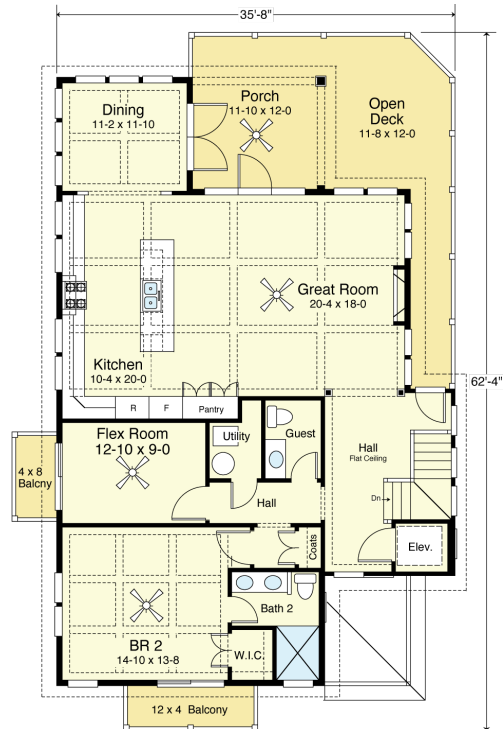
WATER FRONT



STREET FRONT



FIRST FLOOR PLAN
 9'-1 1/2" Flat Ceilings
 Living Area 1,252.9 S.F.
 Front Porch 316.7 S.F.
 Screen Porch 130.8 S.F.
 Entry Porch 75.4 S.F.



SECOND FLOOR PLAN
 10'-0" Flat Ceilings
 Living Area 1,511.3 S.F.
 Front Porch 142.0 S.F.
 Open Deck 211.3 S.F.

COASTAL DESIGNS

cottages for coastal living

web: coastaldesigns.com
 email: designer@coastaldesigns.com

Copyright © 2003-2024, all rights reserved by Coastal Designs.
 This plan depicts a sketch plan, designer reserves the right to make changes and modifications for improvements. Measurements and dimensions are approximate.

SALTSPRAY LANDING 2964-4E

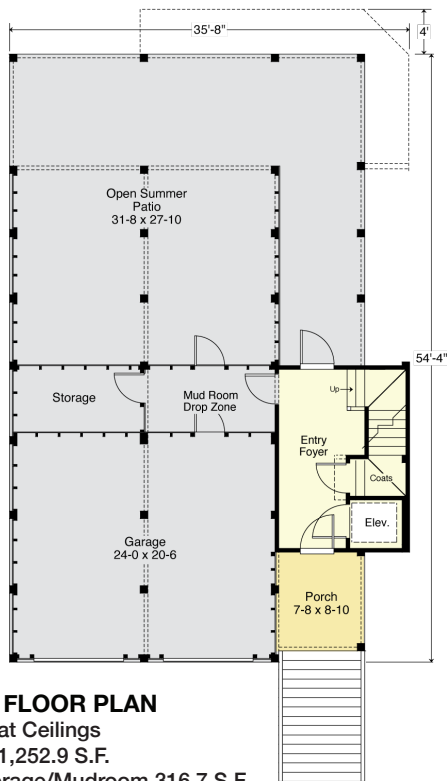
2,964.2 Square Feet Living Area
 39'-8" wide x 62'-4" deep x 38'-4" high

Entry Area	200.0 S.F.	4 Bedrooms 4 1/2 Baths Flex Room Elevator
1st Floor	1,252.9 S.F.	
2nd Floor	1,511.3 S.F.	
3rd Floor	708.0 S.F.	
Total Living	2,964.2 S.F.	

SALTSPRAY LANDING 2964-4E

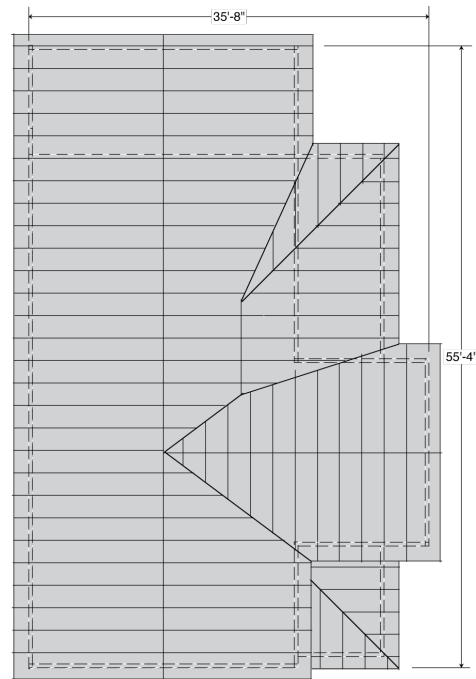


RIGHT SIDE



GROUND FLOOR PLAN

8'-1 1/2" Flat Ceilings
 Entry Area 1,252.9 S.F.
 Garage/Storage/Mudroom 316.7 S.F.
 Open Summer Patio 130.8 S.F.
 Porch 75.4 S.F.



ROOF

COASTAL DESIGNS

cottages for coastal living

web: coastaldesigns.com
 email: designer@coastaldesigns.com

Copyright © 2003-2024, all rights reserved by Coastal Designs.
 This plan depicts a sketch plan, designer reserves the right to make changes and modifications for improvements. Measurements and dimensions are approximate.

SALTSPRAY LANDING 2964-4E

2,964.2 Square Feet Living Area
 39'-8" wide x 62'-4" deep x 38'-4" high

Entry Area	200.0 S.F.	4 Bedrooms 4 1/2 Baths Flex Room Elevator
1st Floor	1,252.9 S.F.	
2nd Floor	1,511.3 S.F.	
3rd Floor	708.0 S.F.	
Total Living	2,964.2 S.F.	