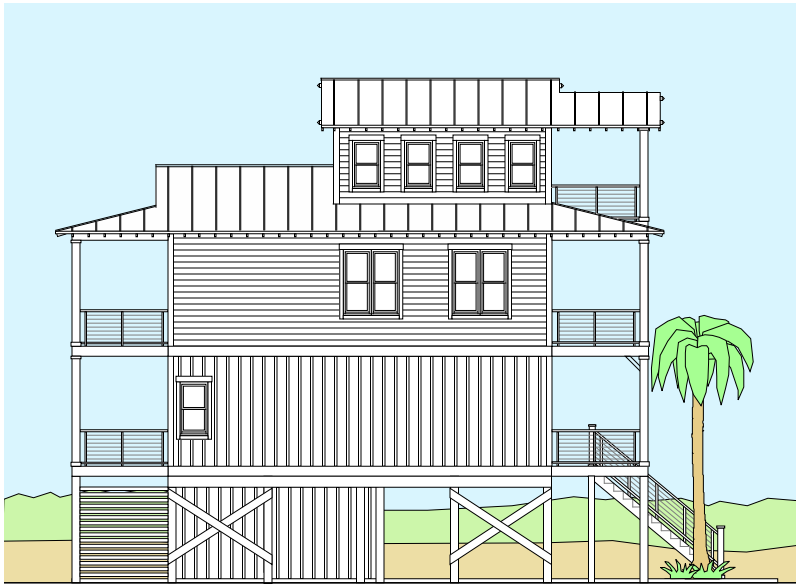


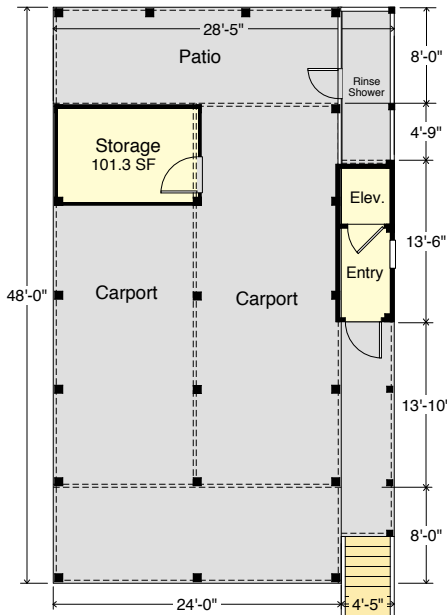
SURF 1940-4E



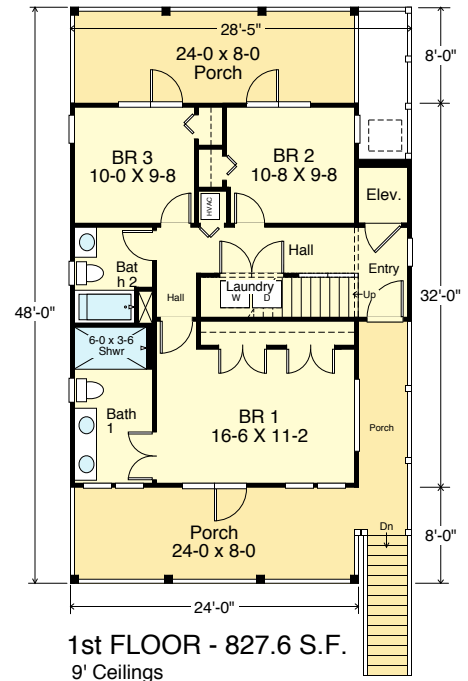
LEFT SIDE



STREET FRONT



PIER PLAN &
GROUND FLOOR
64.7 SF Enclosed Elevator Entry
101.3 SF Enclosed Storage



1st FLOOR - 827.6 S.F.
9' Ceilings

COASTAL DESIGNS

cottages for coastal living

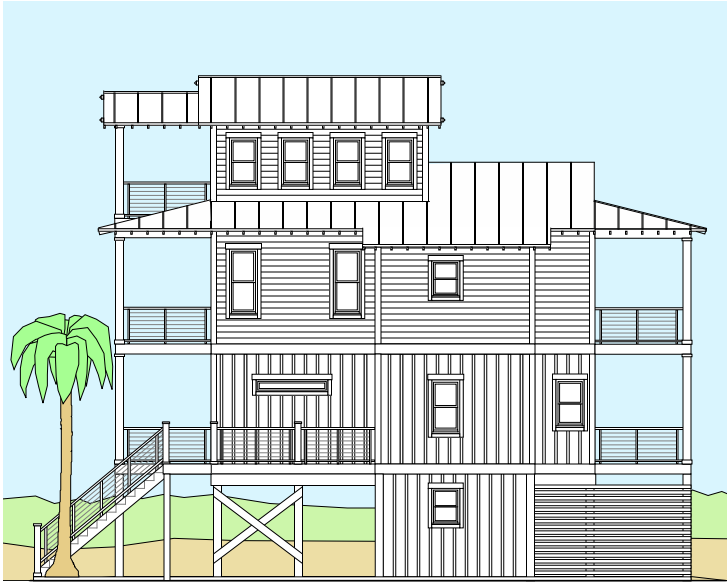
www.coastaldesigns.com
PO Box 379 · Wrightsville Beach · NC ·
28480 · 910-616-6905
Copyright © 2010-2022, Coastal Designs

This plan depicts a sketch plan, designer reserves the right to make changes and modifications for improvements. Measurements and dimensions are approximate.

SURF 1940-4E

1,940.5 square feet living area
4 bedrooms, 3 baths
28'-5" wide x 48'-0" deep x Approx. 42'-2" high
Ground Floor = 166.0 S.F.
1st Floor = 827.6 S.F.
2nd FLOOR = 827.6 S.F.
3rd FLOOR = 285.3 S.F.
Total Living = 1,940.5 S.F.

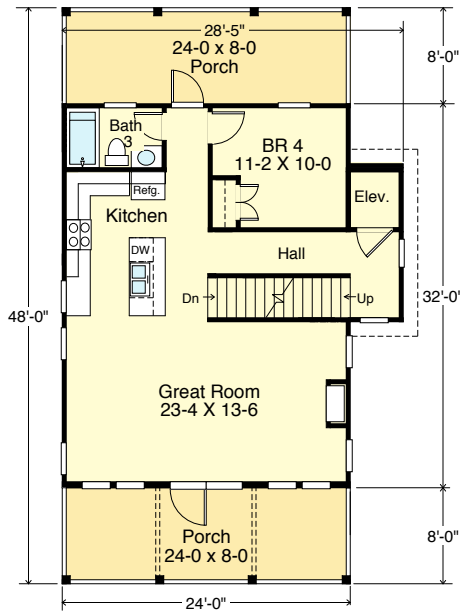
SURF 1940-4E



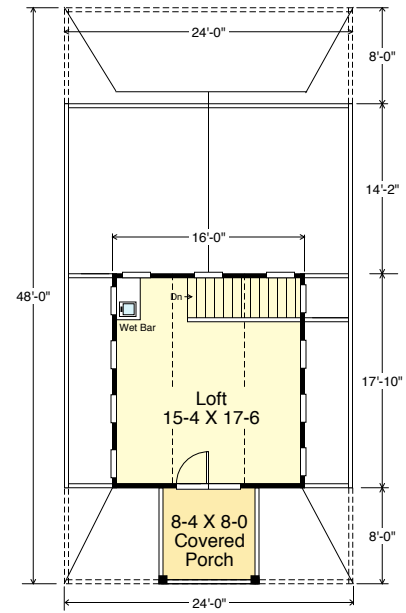
RIGHT SIDE



REAR



2nd FLOOR - 827.6 S.F.
9' Ceilings



3rd Floor (Loft) - 285.3 S.F.
8'+ Vaulted Ceilings

COASTAL DESIGNS

cottages for coastal living

www.coastaldesigns.com
PO Box 379 · Wrightsville Beach · NC ·
28480 · 910-616-6905

Copyright © 2010-2022, Coastal Designs

This plan depicts a sketch plan, designer reserves the right to make changes and modifications for improvements. Measurements and dimensions are approximate.

SURF 1940-4E

1,940.5 square feet living area
4 bedrooms, 3 baths
28'-5" wide x 48'-0" deep x Approx. 42'-2" high

Ground Floor	=	166.0 S.F.
1st Floor	=	827.6 S.F.
2nd FLOOR	=	827.6 S.F.
3rd FLOOR	=	285.3 S.F.
Total Living	=	1,940.5 S.F.