

# SANDY RIDGE 2891-7E



**STREET FRONT**



**RIGHT SIDE**



**FIRST FLOOR PLAN**  
1,020.0 S.F.  
8' Ceilings



**SECOND FLOOR PLAN**  
1,172.0 S.F.  
9' Ceilings

## COASTAL DESIGNS

cottages for coastal living

web: [coastaldesigns.com](http://coastaldesigns.com)  
email: [designer@coastaldesigns.com](mailto:designer@coastaldesigns.com)

Copyright © 2003-2024, all rights reserved by Coastal Designs. This plan depicts a sketch plan, designer reserves the right to make changes and modifications for improvements. Measurements and dimensions are approximate.

## SANDY RIDGE 2891-7E

2,891.2 Square Feet Living Area  
34'-0" wide x 44'-0" deep x 41'-9" high

Ground Floor	165.0 S.F.
1st Floor	1,020.0 S.F.
2nd Floor	1,172.0 S.F.
3rd Floor	534.2 S.F.
<b>Total Living</b>	<b>2,891.2 S.F.</b>

**7 Bedrooms**  
**5 Baths**  
**3 Levels**  
**Elevator**

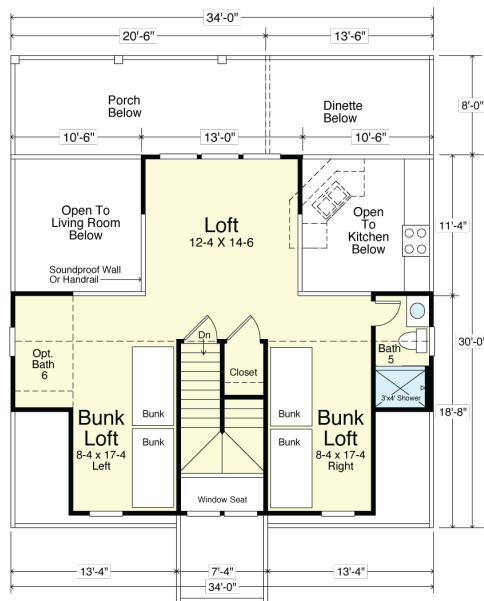
# SANDY RIDGE 2891-7E



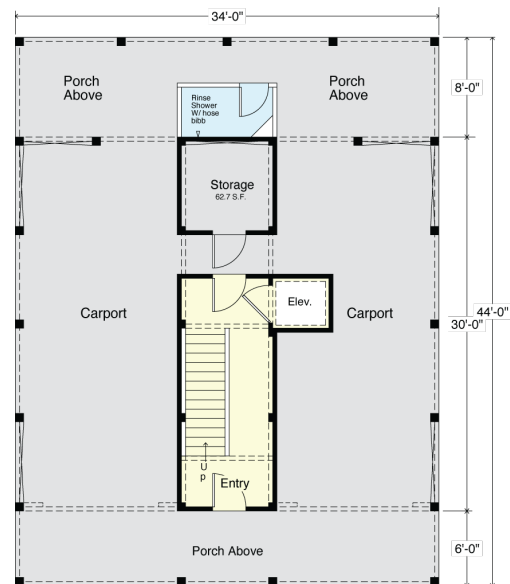
**REAR**



**LEFT SIDE**



**THIRD FLOOR PLAN  
(BUNK LOFT WITH DORMER)**  
534.2 S.F.  
8' Ceilings



**GROUND FLOOR PLAN**  
(Optional 165.0 S.F. unheated)

## COASTAL DESIGNS

cottages for coastal living

web: [coastaldesigns.com](http://coastaldesigns.com)  
email: [designer@coastaldesigns.com](mailto:designer@coastaldesigns.com)

Copyright © 2003-2024, all rights reserved by Coastal Designs.  
This plan depicts a sketch plan, designer reserves the right to make changes and modifications for improvements. Measurements and dimensions are approximate.

## SANDY RIDGE 2891-7E

2,891.2 Square Feet Living Area  
34'-0" wide x 44'-0" deep x 41'-9" high

Ground Floor	165.0 S.F.
1st Floor	1,020.0 S.F.
2nd Floor	1,172.0 S.F.
3rd Floor	534.2 S.F.
<b>Total Living</b>	<b>2,891.2 S.F.</b>

**7 Bedrooms**  
**5 Baths**  
**3 Levels**  
**Elevator**