

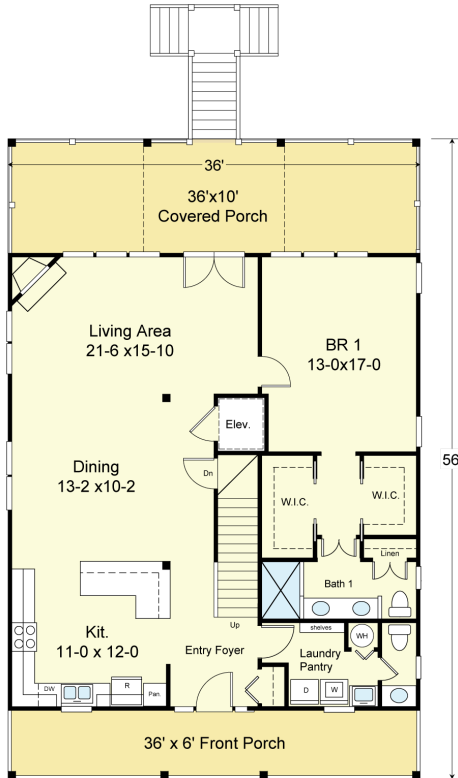
# CEDAR COVE 2313-3E



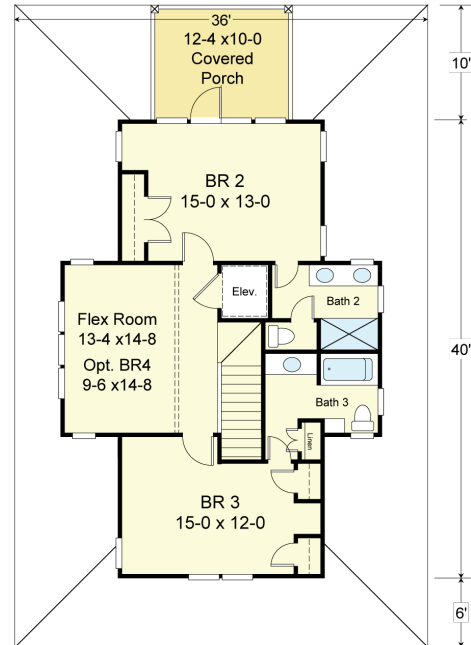
**STREET FRONT**



**REAR**



**FIRST FLOOR PLAN**



**SECOND FLOOR PLAN**

## COASTAL DESIGNS

cottages for coastal living

web: [coastaldesigns.com](http://coastaldesigns.com)  
 email: [designer@coastaldesigns.com](mailto:designer@coastaldesigns.com)

Copyright © 2003-2024, all rights reserved by Coastal Designs.  
 This plan depicts a sketch plan, designer reserves the right to make changes and modifications for improvements. Measurements and dimensions are approximate.

## CEDAR COVE 2313-3E

2,313 Square Feet Living Area  
 36'-0" wide x 56'-0" deep x 35'-0" high

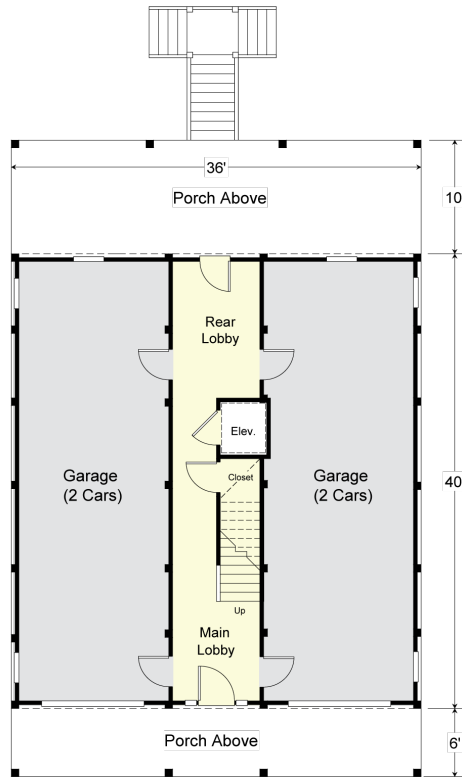
Ground Flr/Lobby	327.7 S.F.	Total w/ Lobby	2,641.0 S.F.
1st Floor	1,440.0 S.F.	Garages	1,062.0 S.F.
2nd Floor	873.3 S.F.		
<b>Total Living</b>	<b>2,313.3 S.F.</b>		

**3 Bedrooms**  
**3 1/2 Baths**  
**Elevator**

# CEDAR COVE 2313-3E



**RIGHT SIDE**



**GROUND FLOOR PLAN**

## COASTAL DESIGNS

cottages for coastal living

web: [coastaldesigns.com](http://coastaldesigns.com)  
 email: [designer@coastaldesigns.com](mailto:designer@coastaldesigns.com)

Copyright © 2003-2024, all rights reserved by Coastal Designs.  
 This plan depicts a sketch plan, designer reserves the right to make changes and modifications for improvements. Measurements and dimensions are approximate.

## CEDAR COVE 2313-3E

2,313 Square Feet Living Area  
 36'-0" wide x 56'-0" deep x 35'-0" high

Ground Flr/Lobby	327.7 S.F.	Total w/ Lobby	2,641.0 S.F.
1st Floor	1,440.0 S.F.	Garages	1,062.0 S.F.
2nd Floor	873.3 S.F.		
<b>Total Living</b>	<b>2,313.3 S.F.</b>		

3 Bedrooms  
 3 1/2 Baths  
 Elevator