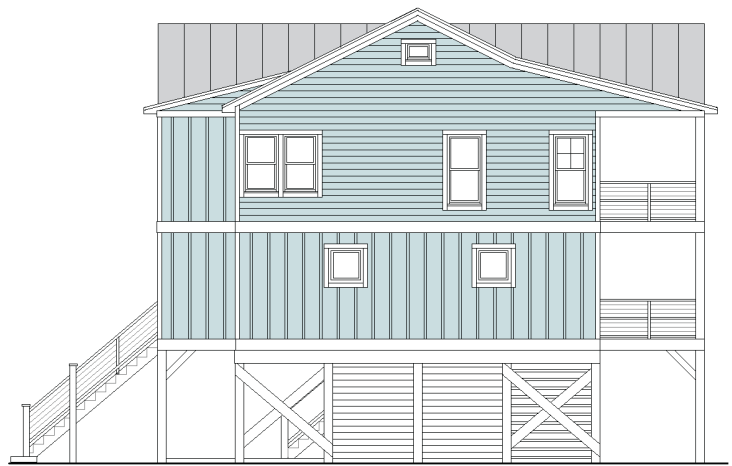


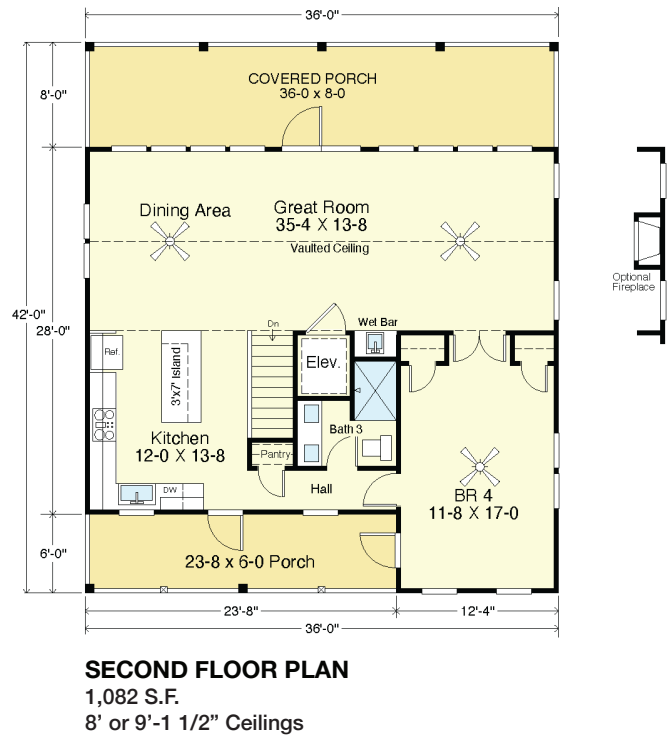
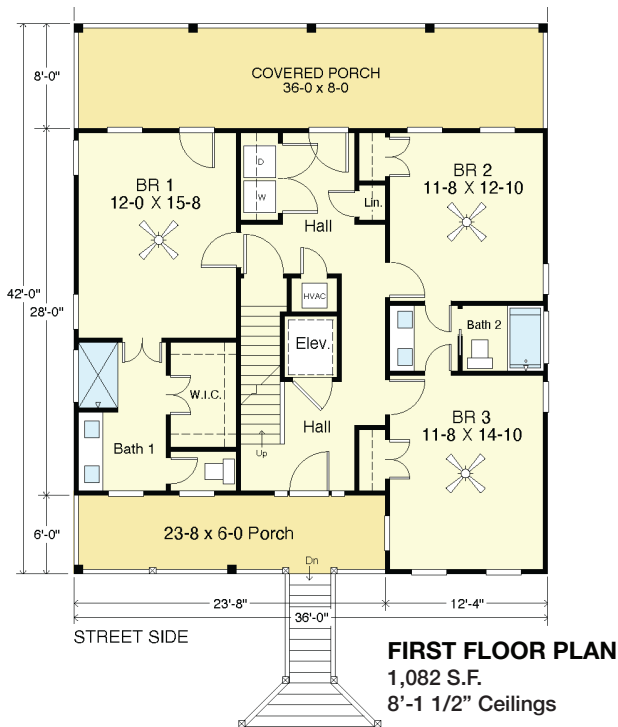
WRIGHTSVILLE 2164-4E



WATER FRONT



RIGHT SIDE



COASTAL DESIGNS

cottages for coastal living

web: coastaldesigns.com
email: designer@coastaldesigns.com

Copyright © 2003-2024, all rights reserved by Coastal Designs. This plan depicts a sketch plan, designer reserves the right to make changes and modifications for improvements. Measurements and dimensions are approximate.

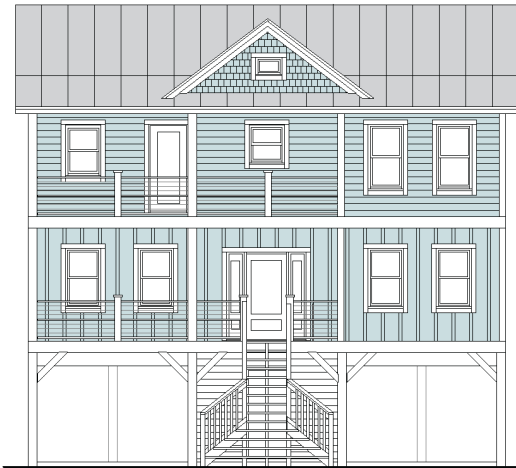
WRIGHTSVILLE 2164-4E

2,164 Square Feet Living Area
36'-0" wide x 42'-0" deep x 34'-9" high

Ground Floor (Unheated)	110.4 S.F.
1st Floor (Heated)	1,082.0 S.F.
2nd Floor (Heated)	1,082.0 S.F.
Total Living Area (Heated)	2,164.0 S.F.
Impervious Area	1,512.0 S.F.

4 Bedrooms
3 Baths
Elevator

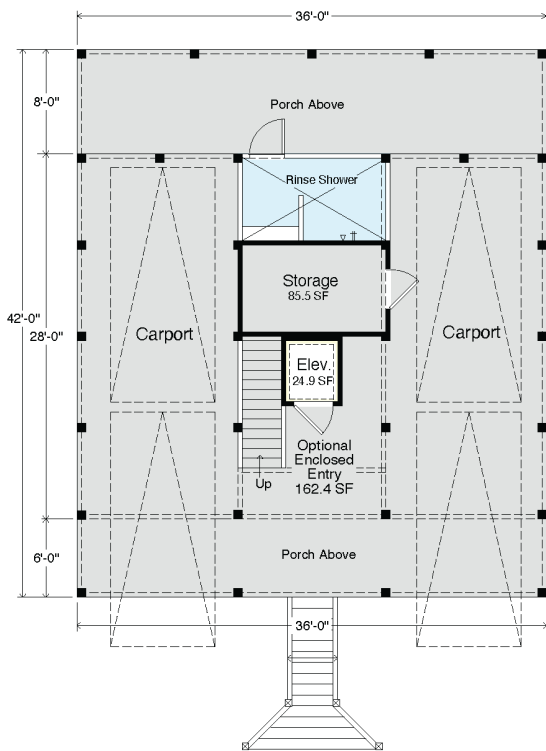
WRIGHTSVILLE 2164-4E



STREET FRONT



LEFT SIDE



GROUND FLOOR PLAN

110 S.F. (Enclosed Storage + Elevator)
8'-1 1/2" Ceilings

COASTAL DESIGNS

cottages for coastal living

web: coastaldesigns.com
email: designer@coastaldesigns.com

Copyright © 2003-2024, all rights reserved by Coastal Designs. This plan depicts a sketch plan, designer reserves the right to make changes and modifications for improvements. Measurements and dimensions are approximate.

WRIGHTSVILLE 2164-4E

2,164 Square Feet Living Area
36'-0" wide x 42'-0" deep x 34'-9" high

Ground Floor (Unheated)	110.4 S.F.	4 Bedrooms 3 Baths Elevator
1st Floor (Heated)	1,082.0 S.F.	
2nd Floor (Heated)	1,082.0 S.F.	
Total Living Area (Heated)	2,164.0 S.F.	
Impervious Area	1,512.0 S.F.	