

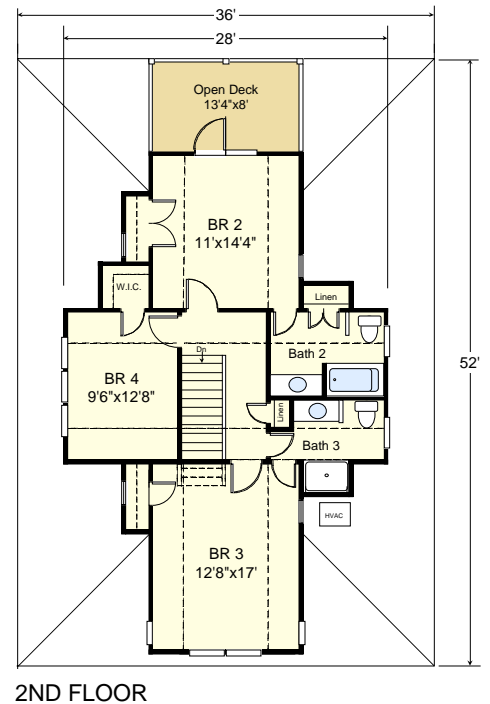
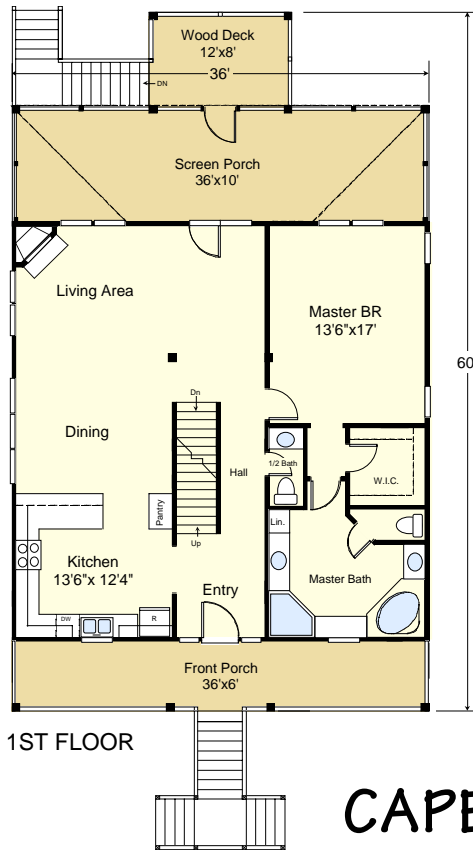
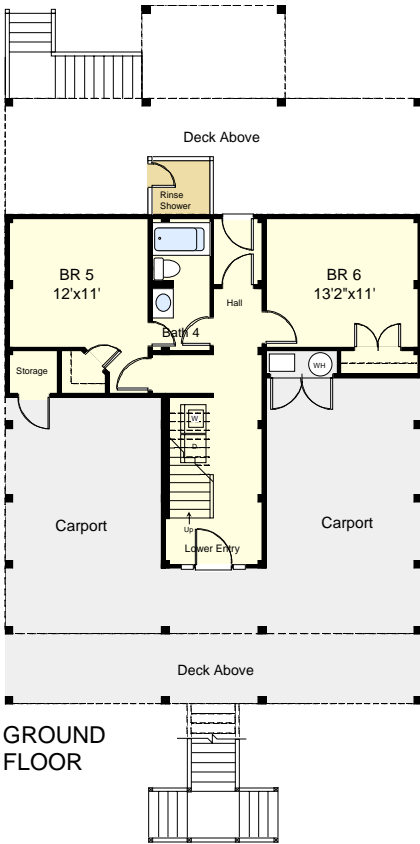
# CAPE POINT I (2774-6)



REAR - WATERFRONT



STREET FRONT



## CAPE POINT I (2774-6)

2,774 square feet living area  
6 bedrooms, 4 1/2 baths  
36'-0" wide, 60'-0" deep  
roof height approx. 34'-8"

LIVING AREAS:  
Ground Floor 270.8 SF Unheated  
First Floor 1,551.0 SF Heated  
Second Floor 836.6 SF Heated  
Total Living Area 2,773.6 SF Heated



**COASTAL DESIGNS**...homes for coastal living

www.coastaldesigns.com · PO Box 379 · Wrightsville Beach · NC · 28480 · 910-509-3140 · © 1995-2009, Coastal Designs, All Rights Reserved

This plan depicts a sketch plan, designer reserves the right to make changes and modifications for improvements. Measurements and dimensions are approximate.