

# CHANNEL WATCH 3887-4E



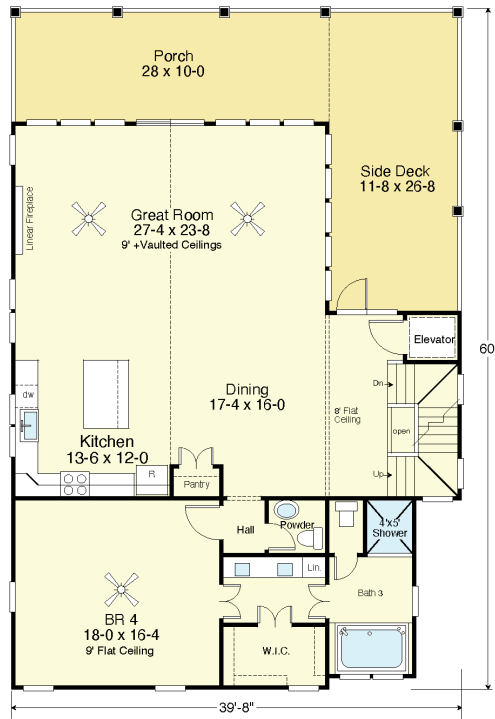
**WATER FRONT**



**STREET FRONT**



**FIRST FLOOR PLAN**  
9'-1 1/2" Flat Ceilings  
Living Area 1,714.5 S.F.



**SECOND FLOOR PLAN**  
9'-0" + Vaulted Ceilings  
Living Area 1,714.5 S.F.

## COASTAL DESIGNS

cottages for coastal living

web: [coastaldesigns.com](http://coastaldesigns.com)  
email: [designer@coastaldesigns.com](mailto:designer@coastaldesigns.com)

Copyright © 2003-2024, all rights reserved by Coastal Designs.  
This plan depicts a sketch plan, designer reserves the right to make changes and modifications for improvements. Measurements and dimensions are approximate.

## CHANNEL WATCH 3887-4E

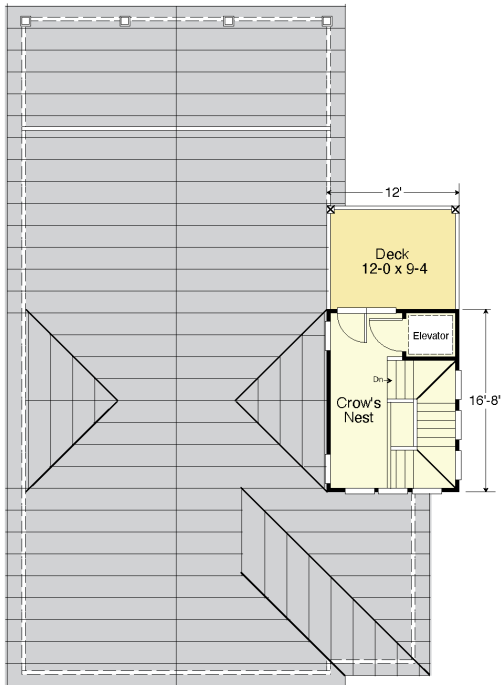
3,887.3 Square Feet Living Area  
39'-8" wide x 60'-0" deep x 40'-0" high

Ground Floor	258.3 S.F.	4 Bedrooms 3 1/2 Baths 3 Levels Elevator
1st Floor	1,714.5 S.F.	
2nd Floor	1,714.5 S.F.	
3rd Floor	200.0 S.F.	
Total Living	3,887.3 S.F.	

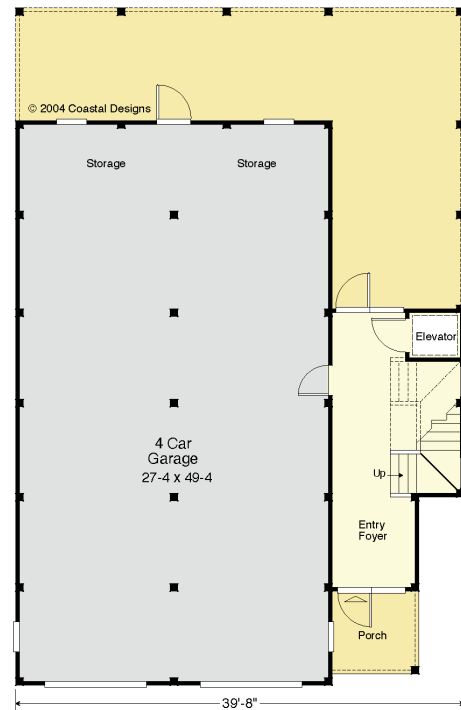
# CHANNEL WATCH 3887-4E



**RIGHT SIDE**



**THIRD FLOOR PLAN - CROW'S NEST**  
8'-0" + Vaulted Ceilings  
Living Area 200.0 S.F.



**GROUND FLOOR PLAN**  
8'-1 1/2" Flat Ceilings  
Entry Area 258.3 S.F.  
Garage/Storage 1,400.0 S.F.

## COASTAL DESIGNS

cottages for coastal living

web: [coastaldesigns.com](http://coastaldesigns.com)  
email: [designer@coastaldesigns.com](mailto:designer@coastaldesigns.com)

Copyright © 2003-2024, all rights reserved by Coastal Designs.  
This plan depicts a sketch plan, designer reserves the right to make changes and modifications for improvements. Measurements and dimensions are approximate.

## CHANNEL WATCH 3887-4E

3,887.3 Square Feet Living Area  
39'-8" wide x 60'-0" deep x 40'-0" high

Ground Floor	258.3 S.F.	4 Bedrooms 3 1/2 Baths 3 Levels Elevator
1st Floor	1,714.5 S.F.	
2nd Floor	1,714.5 S.F.	
3rd Floor	200.0 S.F.	
<b>Total Living</b>	<b>3,887.3 S.F.</b>	