

SHELL ISLAND 4780-8E



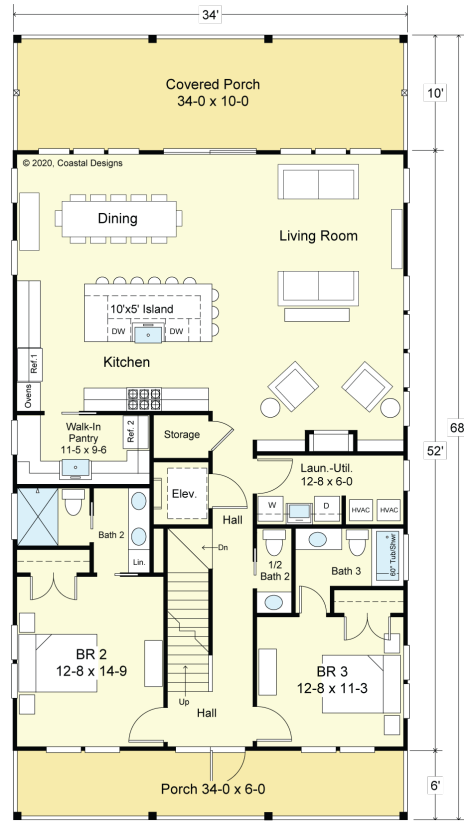
WATER FRONT



RIGHT SIDE



FIRST FLOOR PLAN
 Living Area = 1,768.0 S.F.
 Deck Areas = 544.0 S.F.
 9' Ceiling Height



SECOND FLOOR PLAN
 Living Area = 1,768.0 S.F.
 Deck Areas = 544.0 S.F.
 9' Ceiling Height

COASTAL DESIGNS

cottages for coastal living

web: coastaldesigns.com
 email: designer@coastaldesigns.com

Copyright © 2003-2024, all rights reserved by Coastal Designs.
 This plan depicts a sketch plan, designer reserves the right to make changes and modifications for improvements. Measurements and dimensions are approximate.

SHELL ISLAND 4780-8E

4,779.3 Square Feet Living Area
 34'-0" wide x 68'-0" deep x 40'-8" high

Ground Floor	215.1 S.F.	8 Bedrooms 8 Full Baths 2 Half Baths Elevator
1st Floor	1,768.0 S.F.	
2nd Floor	1,768.0 S.F.	
3rd Floor	1,028.2 S.F.	
Total	4,779.3 S.F.	

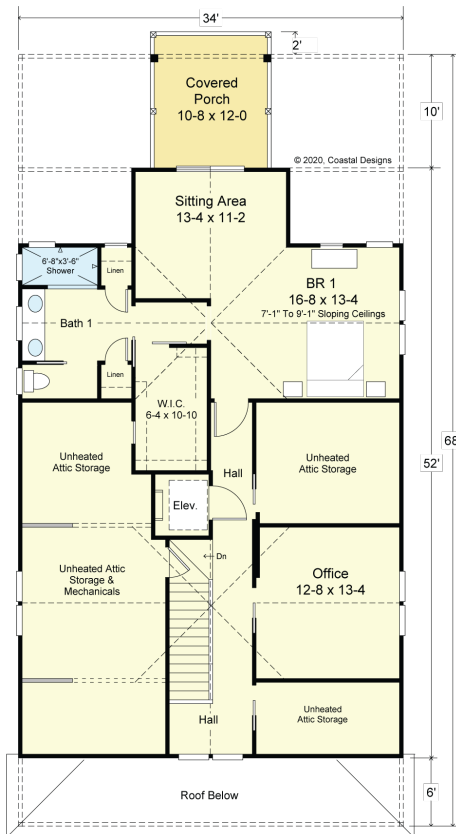
SHELL ISLAND 4780-8E



STREET FRONT

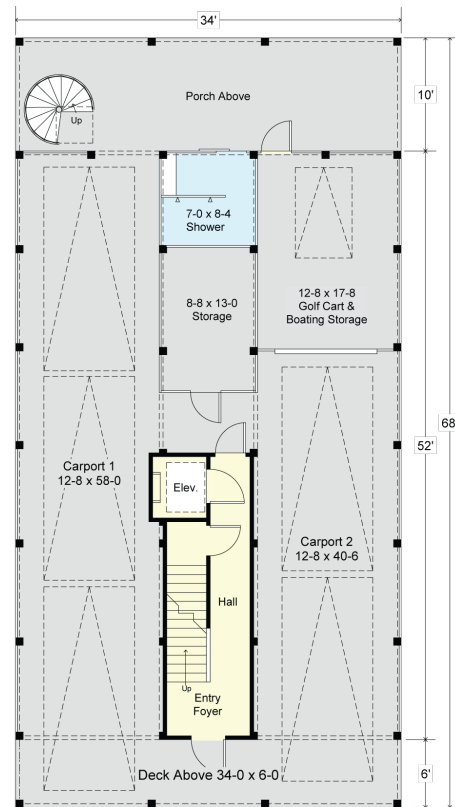


LEFT SIDE



THIRD FLOOR PLAN

Living Area = 1,028.2 S.F.
 Unheated Storage = 606.5 S.F.
 Deck Area = 120.0 S.F.
 7'-1" Knee Walls to 9' at Ceiling Ridge



GROUND FLOOR PLAN

Entry & Elevator Area = 215.1 S.F.
 9' Ceiling Height

COASTAL DESIGNS

cottages for coastal living

web: coastaldesigns.com
 email: designer@coastaldesigns.com

Copyright © 2003-2024, all rights reserved by Coastal Designs.
 This plan depicts a sketch plan, designer reserves the right to make changes and modifications for improvements. Measurements and dimensions are approximate.

SHELL ISLAND 4780-8E

4,779.3 Square Feet Living Area
 34'-0" wide x 68'-0" deep x 40'-8" high

Ground Floor	215.1 S.F.
1st Floor	1,768.0 S.F.
2nd Floor	1,768.0 S.F.
3rd Floor	1,028.2 S.F.
Total	4,779.3 S.F.

8 Bedrooms
 6 Full Baths
 2 Half Baths
 Elevator