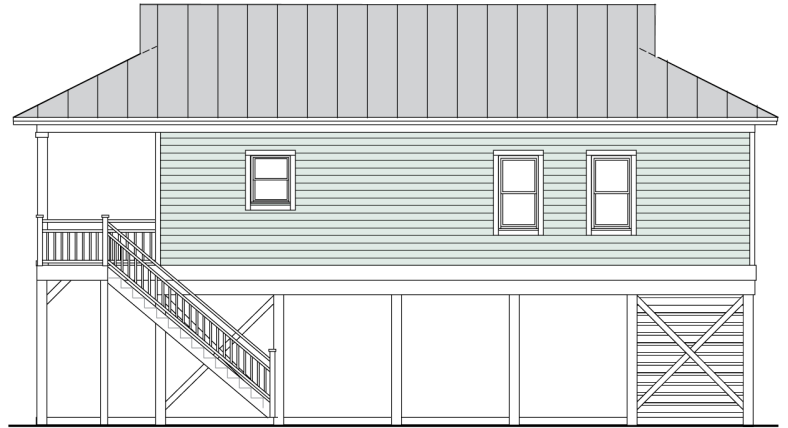


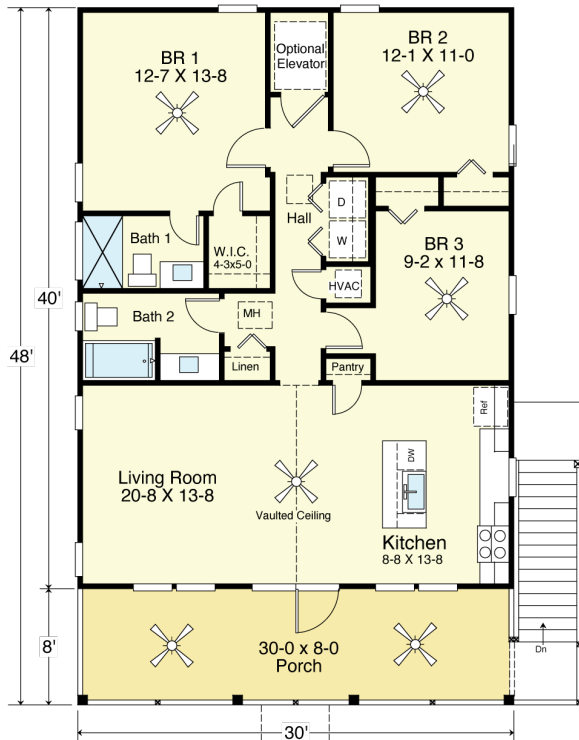
SEASPRAY 1200-3E



WATER FRONT



RIGHT SIDE



FIRST FLOOR PLAN
9'-1 1/2" Ceilings

COASTAL DESIGNS

cottages for coastal living

web: coastaldesigns.com
email: designer@coastaldesigns.com

Copyright © 2003-2024, all rights reserved by Coastal Designs.
This plan depicts a sketch plan, designer reserves the right to make changes and modifications for improvements. Measurements and dimensions are approximate.

SEASPRAY 1200-3E

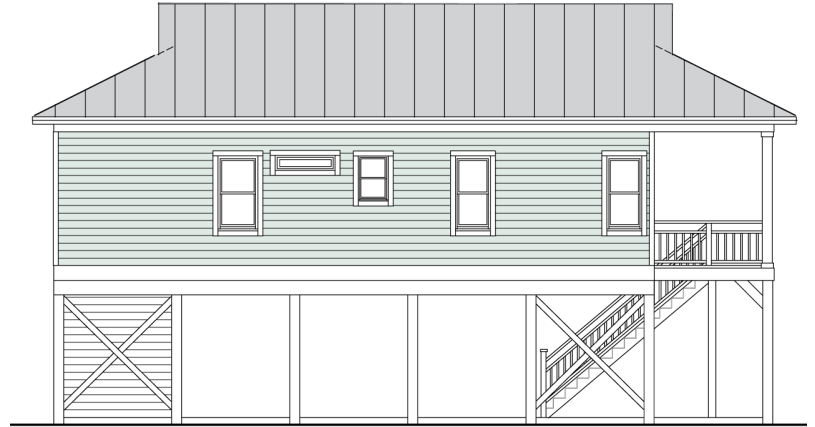
1,200 Square Feet Living Area
30'-0" wide x 48'-0" deep x 29'-6" high

1st Floor	1,200.0 S.F.	3 Bedrooms 2 Baths Elevator
Ground Floor Storage	300.0 S.F.	
Total Living Area	1,200.0 S.F.	
Porches	240.0 S.F.	

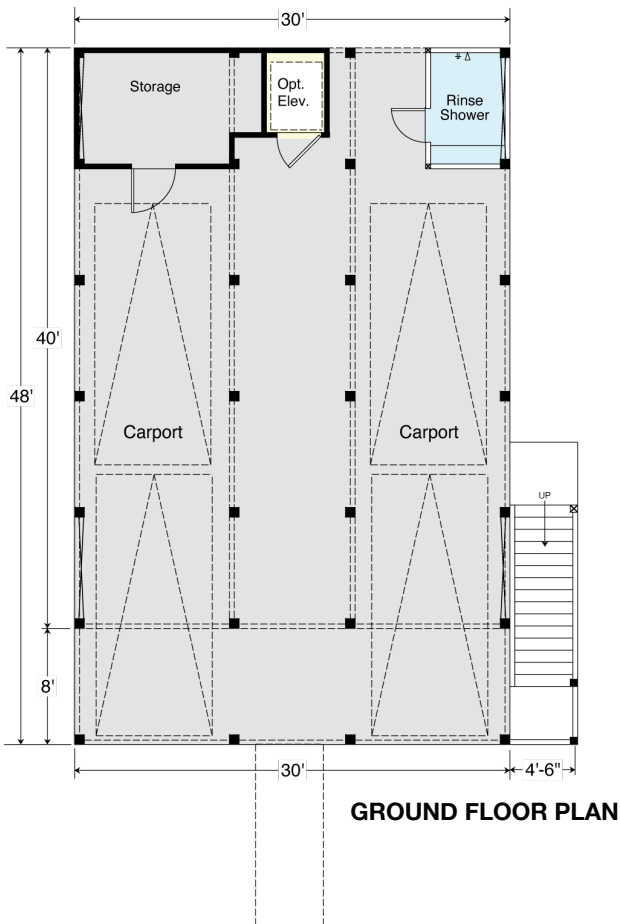
SEASPRAY 1200-3E



REAR



LEFT SIDE



COASTAL DESIGNS

cottages for coastal living

web: coastaldesigns.com
 email: designer@coastaldesigns.com

Copyright © 2003-2024, all rights reserved by Coastal Designs.
 This plan depicts a sketch plan, designer reserves the right to make changes and modifications for improvements. Measurements and dimensions are approximate.

SEASPRAY 1200-3E

1,200 Square Feet Living Area
 30'-0" wide x 48'-0" deep x 29'-6" high

1st Floor	1,200.0 S.F.	3 Bedrooms 2 Baths Elevator
Ground Floor Storage	300.0 S.F.	
Total Living Area	1,200.0 S.F.	
Porches	240.0 S.F.	