

OCEAN RIDGE 1853-5E



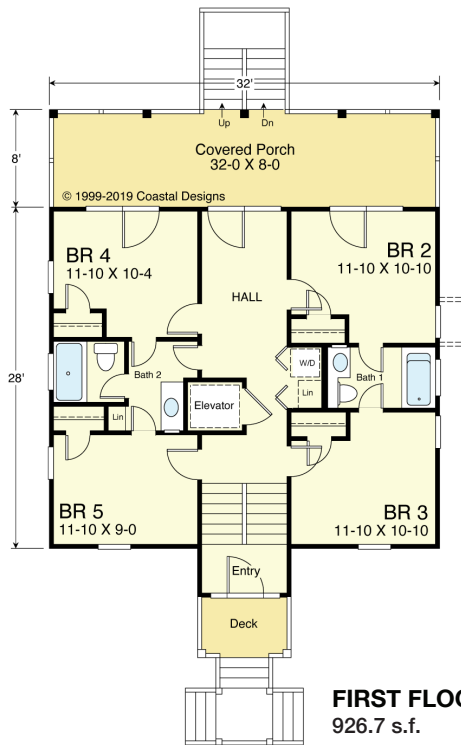
FRONT

© 1999-2019 Coastal Designs

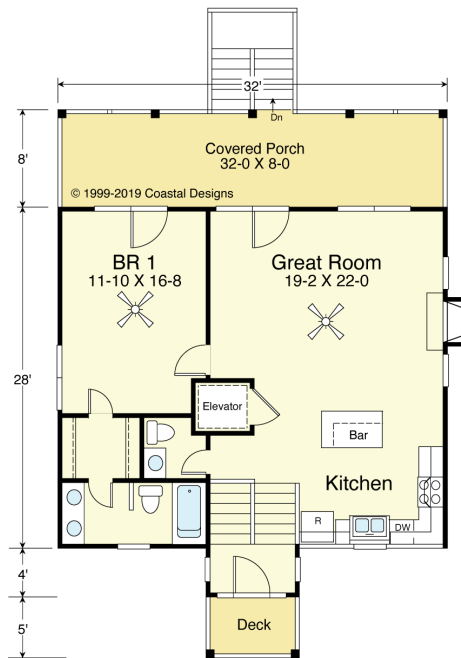


RIGHT SIDE

© 1999-2019 Coastal Designs



FIRST FLOOR PLAN
926.7 s.f.



SECOND FLOOR PLAN
926.7 s.f.

COASTAL DESIGNS

cottages for coastal living

web: coastaldesigns.com
email: designer@coastaldesigns.com

Copyright © 2003-2024, all rights reserved by Coastal Designs. This plan depicts a sketch plan, designer reserves the right to make changes and modifications for improvements. Measurements and dimensions are approximate.

OCEAN RIDGE 1853-5E

1,853.4 Square Feet Living Area
32'-0" wide x 45'-0" deep x 36'-0" high

1st Floor	926.7 S.F.
2nd Floor	926.7 S.F.
Total	1,853.4 S.F.
Porches	588.7 S.F.

5 Bedrooms
3 1/2 Baths
Elevator

OCEAN RIDGE 1853-5E



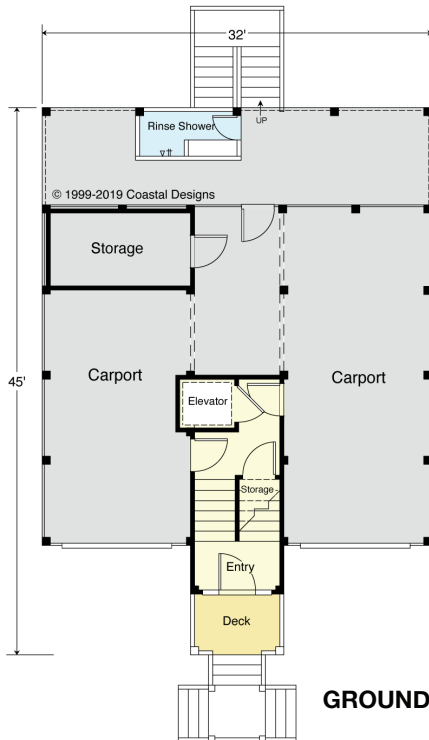
STREET FRONT

© 1999-2019 Coastal Designs



LEFT SIDE

© 1999-2019 Coastal Designs



GROUND FLOOR PLAN

COASTAL DESIGNS

cottages for coastal living

web: coastaldesigns.com
 email: designer@coastaldesigns.com

Copyright © 2003-2024, all rights reserved by Coastal Designs.
 This plan depicts a sketch plan, designer reserves the right to make changes and modifications for improvements. Measurements and dimensions are approximate.

OCEAN RIDGE 1853-5E

1,853.4 Square Feet Living Area
 32'-0" wide x 45'-0" deep x 36'-0" high

1st Floor	926.7 S.F.	5 Bedrooms 3 1/2 Baths Elevator
2nd Floor	926.7 S.F.	
Total	1,853.4 S.F.	
Porches	588.7 S.F.	