

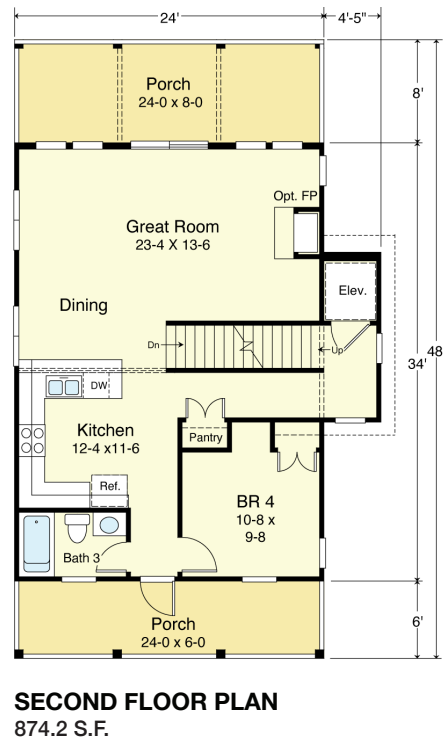
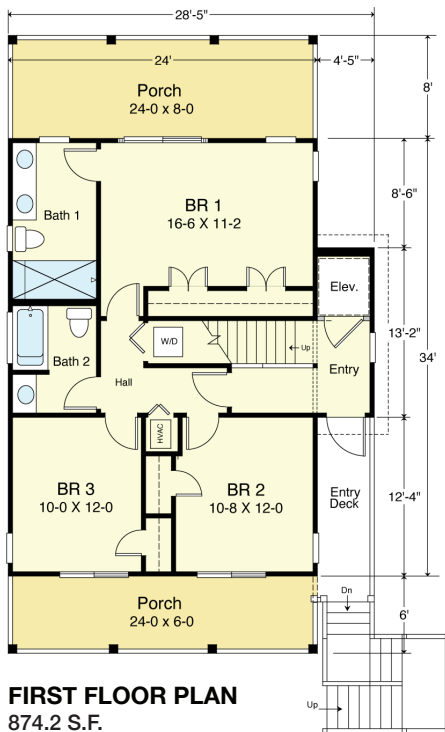
PENINSULA 2034-4E



WATER FRONT



RIGHT SIDE



COASTAL DESIGNS

cottages for coastal living

web: coastaldesigns.com
email: designer@coastaldesigns.com

Copyright © 2003-2024, all rights reserved by Coastal Designs.
This plan depicts a sketch plan, designer reserves the right to make changes and modifications for improvements. Measurements and dimensions are approximate.

PENINSULA 2034-4E

2,033.7 Square Feet Living Area
28'-5" wide x 48'-0" deep x 44'-0" high

Ground Floor	62.5 S.F.
1st Floor	874.2 S.F.
2nd Floor	874.2 S.F.
3rd Floor	285.3 S.F.
Total	2,033.7 S.F.

4 Bedrooms
3 Baths
3 Levels
Elevator

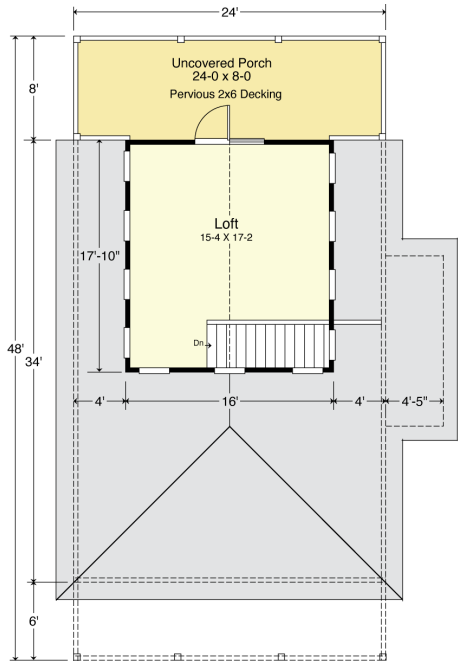
PENINSULA 2034-4E



STREET FRONT

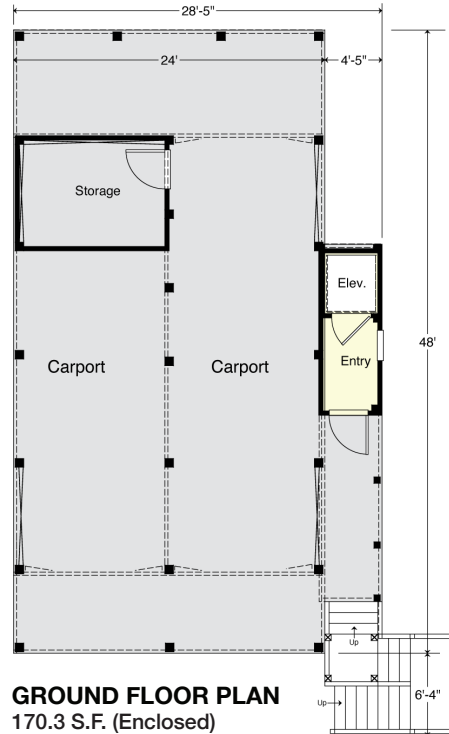


LEFT SIDE



THIRD FLOOR PLAN (LOFT)

285.3 S.F.
 Net Floor Area (Inside Walls
 Excluding Stairs) - 231.81 S.F.



GROUND FLOOR PLAN

170.3 S.F. (Enclosed)

COASTAL DESIGNS

cottages for coastal living

web: coastaldesigns.com
 email: designer@coastaldesigns.com

Copyright © 2003-2024, all rights reserved by Coastal Designs.
 This plan depicts a sketch plan, designer reserves the right to make changes and modifications for improvements. Measurements and dimensions are approximate.

PENINSULA 2034-4E

2,033.7 Square Feet Living Area
 28'-5" wide x 48'-0" deep x 44'-0" high

Ground Floor	62.5 S.F.
1st Floor	874.2 S.F.
2nd Floor	874.2 S.F.
3rd Floor	285.3 S.F.
Total	2,033.7 S.F.

4 Bedrooms
 3 Baths
 3 Levels
 Elevator