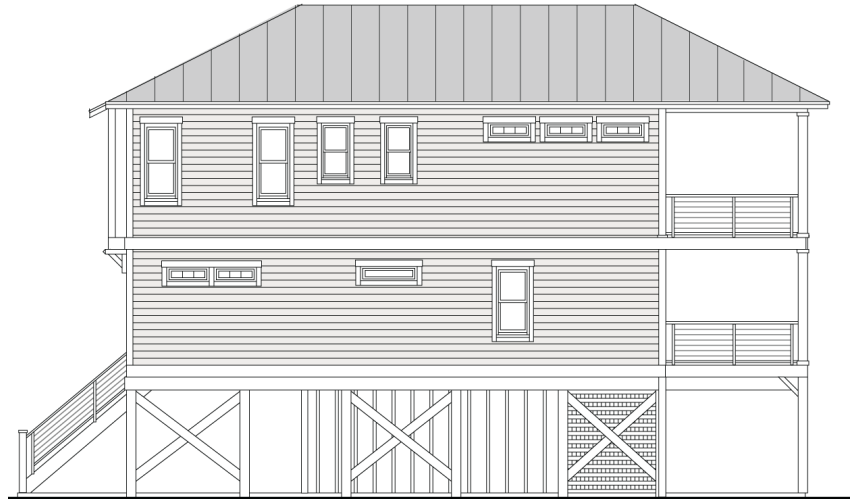


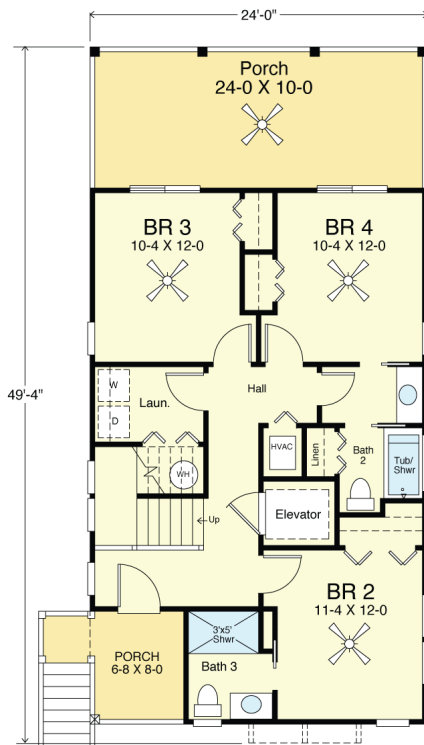
HOLDEN BEACH 1807-4E



WATER FRONT



RIGHT SIDE



FIRST FLOOR PLAN
858.7 S.F.
8' Ceilings



SECOND FLOOR PLAN
885.3 S.F.
9' Ceilings

COASTAL DESIGNS

cottages for coastal living

web: coastaldesigns.com
email: designer@coastaldesigns.com

Copyright © 2003-2024, all rights reserved by Coastal Designs.
This plan depicts a sketch plan, designer reserves the right to make changes and modifications for improvements. Measurements and dimensions are approximate.

HOLDEN BEACH 1807-4E

1,806.5 Square Feet Living Area
25'-4" wide x 49'-4" deep x 34'-10" high

Ground Floor	62.5 S.F.	4 Bedrooms 3 1/2 Baths Elevator
1st Floor	858.7 S.F.	
2nd Floor	885.3 S.F.	
Standard Total Area	1,806.5 S.F.	
Carport	726.0 S.F.	

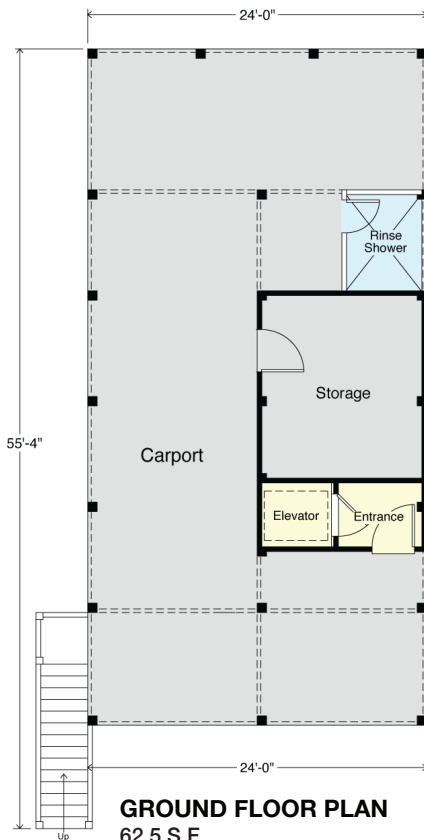
HOLDEN BEACH 1807-4E



STREET FRONT



LEFT SIDE



COASTAL DESIGNS

cottages for coastal living

web: coastaldesigns.com
email: designer@coastaldesigns.com

Copyright © 2003-2024, all rights reserved by Coastal Designs.
This plan depicts a sketch plan, designer reserves the right to make changes and modifications for improvements. Measurements and dimensions are approximate.

HOLDEN BEACH 1807-4E

1,806.5 Square Feet Living Area
25'-4" wide x 49'-4" deep x 34'-10" high

Ground Floor	62.5 S.F.	4 Bedrooms 3 1/2 Baths Elevator
1st Floor	858.7 S.F.	
2nd Floor	885.3 S.F.	
Standard Total Area	1,806.5 S.F.	
Carport	726.0 S.F.	