

OCEAN RIDGE 1917-4E



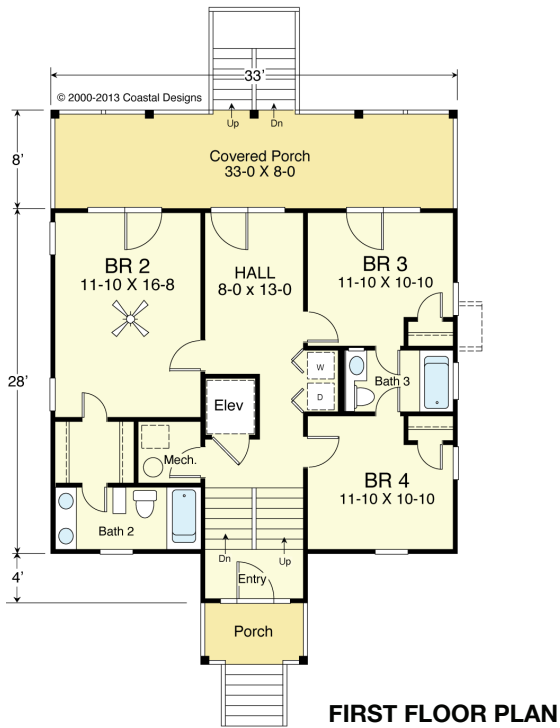
FRONT

© 2000-2013 Coastal Designs

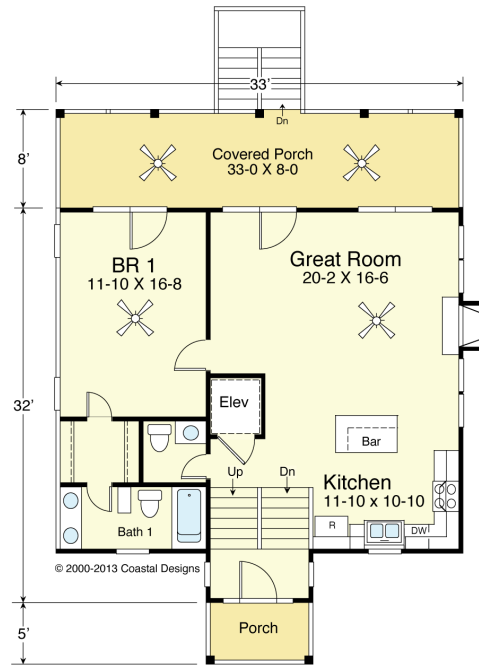


RIGHT SIDE

© 2000-2013 Coastal Designs



FIRST FLOOR PLAN
958.7 s.f.
8' Ceilings



SECOND FLOOR PLAN
958.7 s.f.
8' Ceilings

COASTAL DESIGNS

cottages for coastal living

web: coastaldesigns.com
email: designer@coastaldesigns.com

Copyright © 2003-2024, all rights reserved by Coastal Designs. This plan depicts a sketch plan, designer reserves the right to make changes and modifications for improvements. Measurements and dimensions are approximate.

OCEAN RIDGE 1917-4E

1,917.4 Square Feet Living Area
33'-0" wide x 50'-0" deep x 36'-3" high

Ground Floor (Unheated)	105.9 S.F.
1st Floor	958.7 S.F.
2nd Floor	958.7 S.F.
Total	1,917.4 S.F.

4 Bedrooms
3 1/2 Baths
Elevator

OCEAN RIDGE 1917-4E



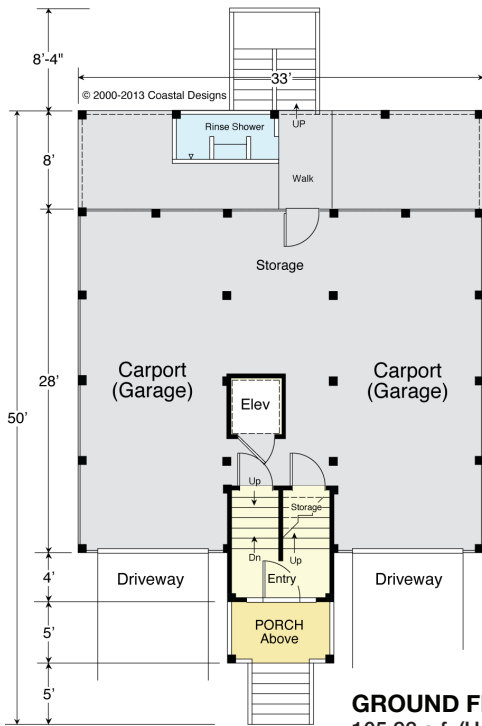
STREET FRONT

© 2000-2013 Coastal Designs



LEFT SIDE

© 2000-2013 Coastal Designs



GROUND FLOOR PLAN
105.92 s.f. (Unheated)
8' Ceilings

COASTAL DESIGNS

cottages for coastal living

web: coastaldesigns.com
email: designer@coastaldesigns.com

Copyright © 2003-2024, all rights reserved by Coastal Designs.
This plan depicts a sketch plan, designer reserves the right to make changes and modifications for improvements. Measurements and dimensions are approximate.

OCEAN RIDGE 1917-4E

1,917.4 Square Feet Living Area
33'-0" wide x 50'-0" deep x 36'-3" high

Ground Floor (Unheated)	105.9 S.F.	4 Bedrooms 3 1/2 Baths Elevator
1st Floor	958.7 S.F.	
2nd Floor	958.7 S.F.	
Total	1,917.4 S.F.	