

# WRIGHTSVILLE 1904-4/5E



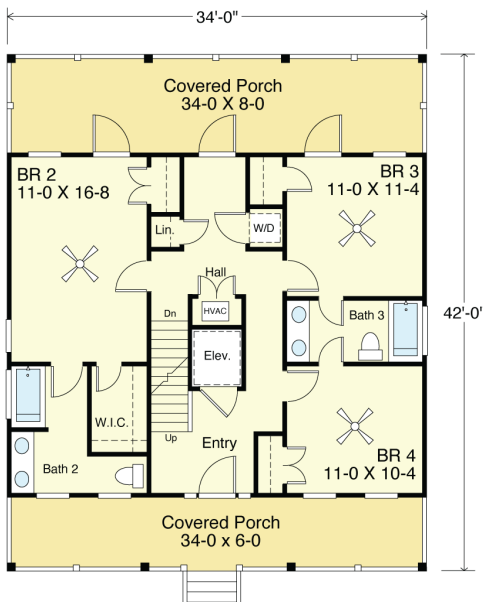
**FRONT**

© Copyright www.Coastal Designs.com

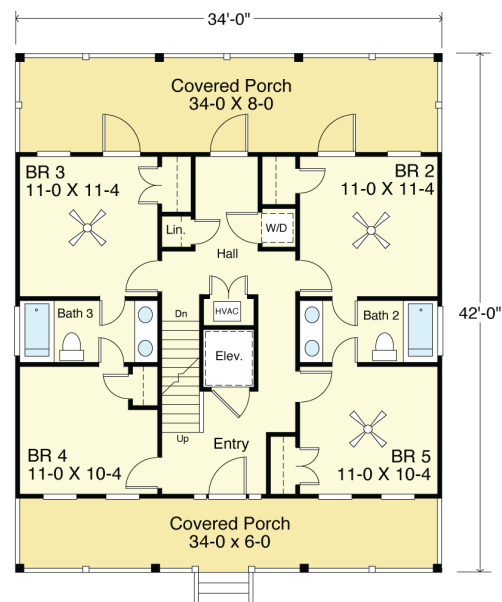


**RIGHT SIDE**

© Copyright www.Coastal Designs.com



**FIRST FLOOR PLAN (Optional 4 BR Version)**  
952.0 s.f. (Heated)



**FIRST FLOOR PLAN (Optional 5 BR Version)**  
952.0 s.f. (Heated)

## COASTAL DESIGNS

cottages for coastal living

web: [coastaldesigns.com](http://coastaldesigns.com)  
email: [designer@coastaldesigns.com](mailto:designer@coastaldesigns.com)

Copyright © 2003-2024, all rights reserved by Coastal Designs.  
This plan depicts a sketch plan, designer reserves the right to make changes and modifications for improvements. Measurements and dimensions are approximate.

## WRIGHTSVILLE 1904-4/5E

1,904 Square Feet Living Area  
34'-0" wide x 42'-0" deep x 38'-8" high

Ground Floor	240.0 S.F.	4 or 5 Bedrooms 3 1/2-4 Baths 3 Levels Elevator
1st Floor	952.0 S.F.	
2nd Floor	952.0 S.F.	
Total	1,904.0 S.F.	

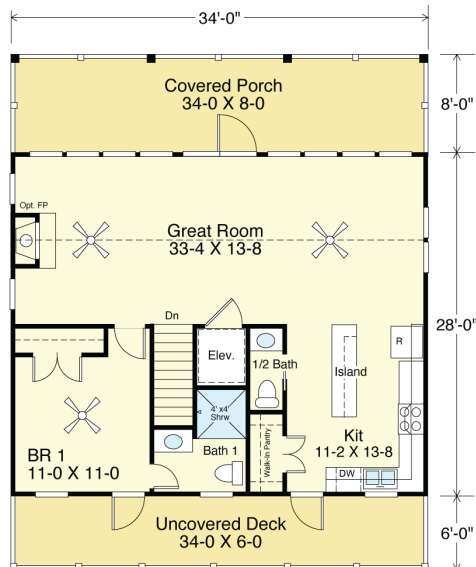
# WRIGHTSVILLE 1904-4/5E



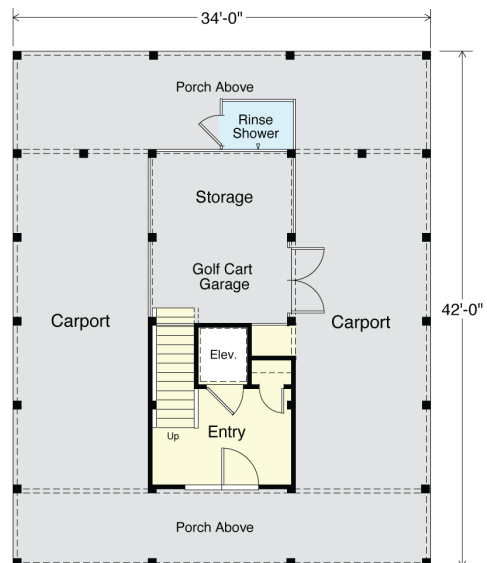
**STREET FRONT**



**LEFT SIDE (4 BR OPTION)**



**SECOND FLOOR PLAN**  
952.0 s.f. (Heated)



**GROUND FLOOR PLAN**  
240.0 s.f. (Unheated)

## COASTAL DESIGNS

cottages for coastal living

web: [coastaldesigns.com](http://coastaldesigns.com)  
email: [designer@coastaldesigns.com](mailto:designer@coastaldesigns.com)

Copyright © 2003-2024, all rights reserved by Coastal Designs.  
This plan depicts a sketch plan, designer reserves the right to make changes and modifications for improvements. Measurements and dimensions are approximate.

## WRIGHTSVILLE 1904-4/5E

1,904 Square Feet Living Area  
34'-0" wide x 42'-0" deep x 38'-6" high

Ground Floor	240.0 S.F.	4 or 5 Bedrooms 3 1/2-4 Baths 3 Levels Elevator
1st Floor	952.0 S.F.	
2nd Floor	952.0 S.F.	
Total	1,904.0 S.F.	