

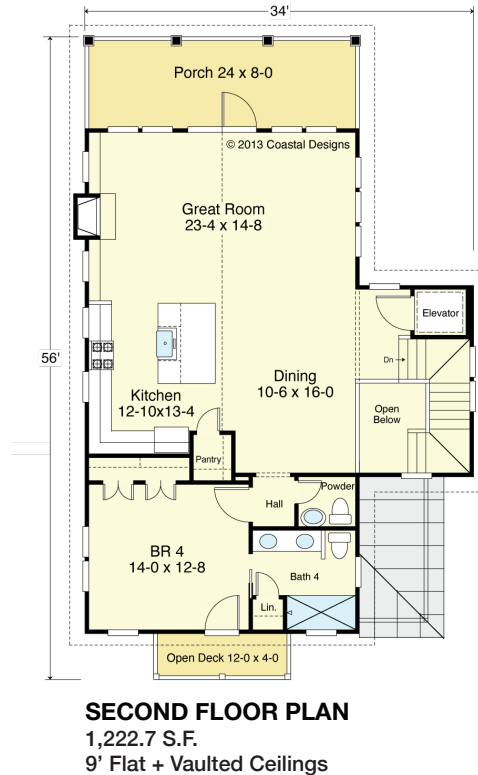
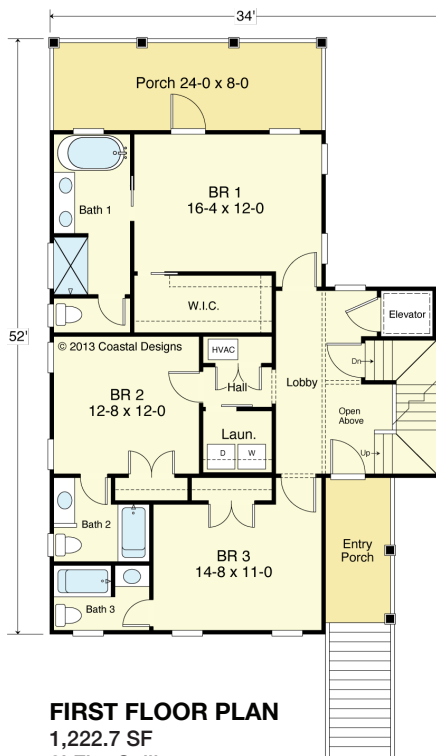
# SNOW'S CUT II 2445-4E



**WATER FRONT**



**RIGHT SIDE**



## COASTAL DESIGNS

cottages for coastal living

web: [coastaldesigns.com](http://coastaldesigns.com)  
email: [designer@coastaldesigns.com](mailto:designer@coastaldesigns.com)

Copyright © 2003-2024, all rights reserved by Coastal Designs. This plan depicts a sketch plan, designer reserves the right to make changes and modifications for improvements. Measurements and dimensions are approximate.

## SNOW'S CUT II 2445-4E

2,445 Square Feet Living Area  
34'-0" wide x 52'-0" deep x 38'-6" high

Entry Area (Unheated)	172.2 S.F.	4 Bedrooms 4 1/2 Baths Elevator
1st Floor (Heated)	1,222.7 S.F.	
2nd Floor (Heated)	1,222.7 S.F.	
Total (Heated)	2,448.4 S.F.	
Porches	508.0 S.F.	

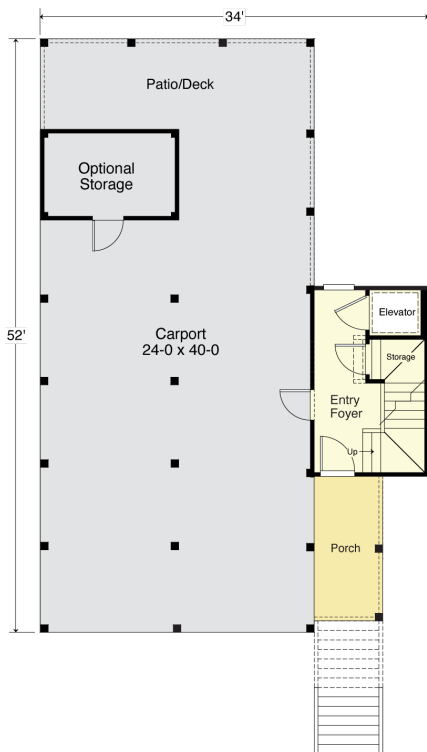
# SNOW'S CUT II 2445-4E



**STREET FRONT**



**LEFT SIDE**



**GROUND FLOOR PLAN**

Entry Area (Unheated) 172.2 SF  
 Carport 1,056.0 SF  
 Opt. Storage 96.0 SF  
 8' Flat Ceilings

## COASTAL DESIGNS

cottages for coastal living

web: [coastaldesigns.com](http://coastaldesigns.com)  
 email: [designer@coastaldesigns.com](mailto:designer@coastaldesigns.com)

Copyright © 2003-2024, all rights reserved by Coastal Designs.  
 This plan depicts a sketch plan, designer reserves the right to make changes and modifications for improvements. Measurements and dimensions are approximate.

## SNOW'S CUT II 2445-4E

2,445 Square Feet Living Area  
 34'-0" wide x 52'-0" deep x 38'-6" high

Entry Area (Unheated)	172.2 S.F.
1st Floor (Heated)	1,222.7 S.F.
2nd Floor (Heated)	1,222.7 S.F.
Total (Heated)	2,448.4 S.F.
Porches	508.0 S.F.

4 Bedrooms  
 4 1/2 Baths  
 Elevator