

HATTERAS 4034-6E



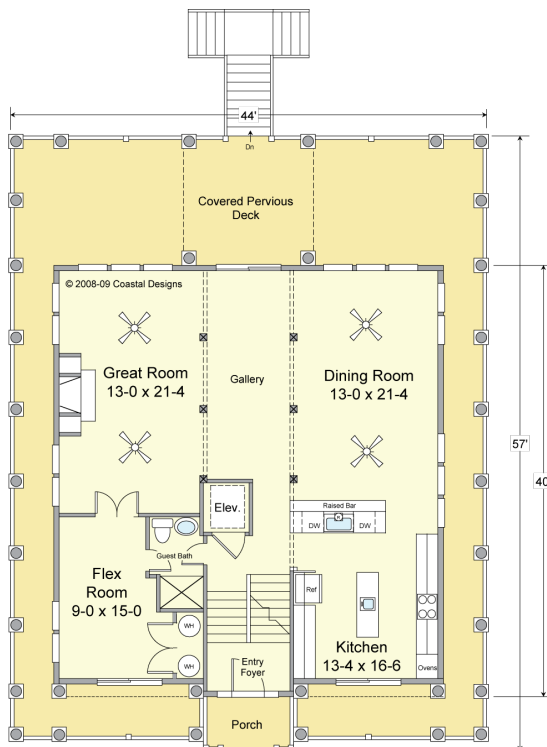
WATER FRONT

© 2008-09 Coastal Designs



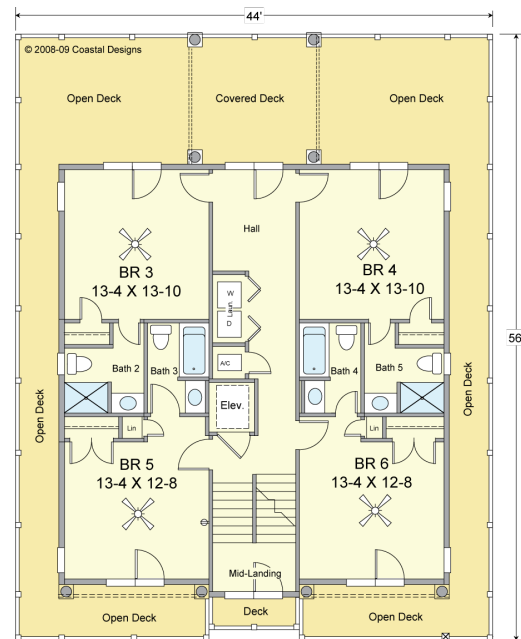
RIGHT SIDE

© 2008-09 Coastal Designs



FIRST FLOOR PLAN

10' Ceilings
1,407.7 S.F.



SECOND FLOOR PLAN

8' Ceilings
1,407.7 S.F.

COASTAL DESIGNS

cottages for coastal living

web: coastaldesigns.com

email: designer@coastaldesigns.com

Copyright © 2003-2024, all rights reserved by Coastal Designs. This plan depicts a sketch plan, designer reserves the right to make changes and modifications for improvements. Measurements and dimensions are approximate.

HATTERAS 4034-6E

4,034.4 Square Feet Living Area
44'-0" wide x 57'-0" deep x 44'-9" high

| | |
|--------------------------|------------------------------|
| Ground Floor | 263.7 S.F. (Unheated) |
| 1st Floor | 1,407.7 S.F. (Heated) |
| 2nd Floor | 1,407.7 S.F. (Heated) |
| 3rd Floor | 1,219.0 S.F. (Heated) |
| Total Heated Area | 4,034.4 S.F. (Heated) |

6 Bedrooms
7 Baths
Elevator

HATTERAS 4034-6E



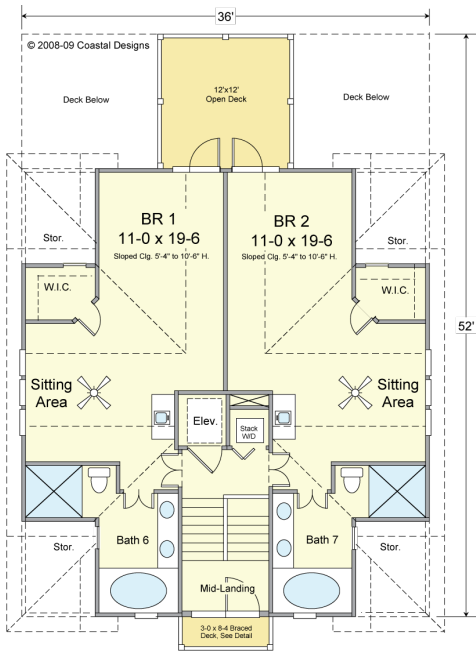
STREET FRONT

© 2008-09 Coastal Designs



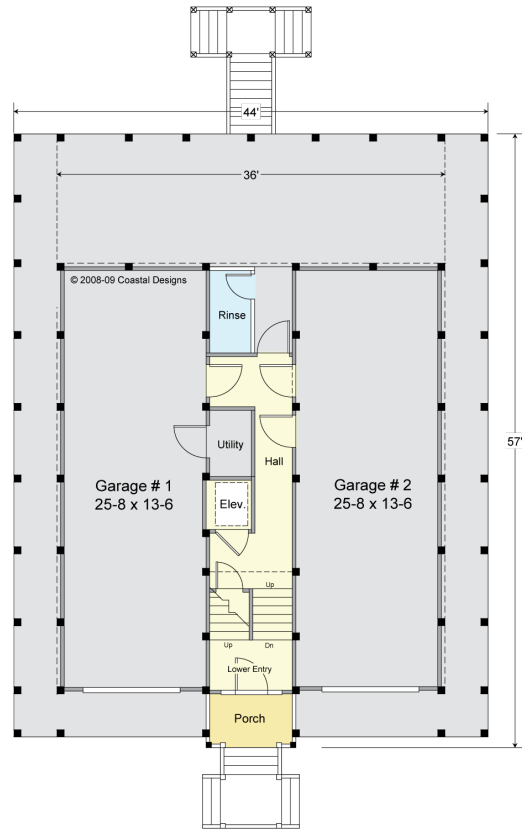
LEFT SIDE

© 2008-09 Coastal Designs



THIRD FLOOR PLAN

5'-4" Knee Wall Vaulted to 10'-8" Flat Ceilings
1,219.0 S.F.



GROUND FLOOR PLAN

263.7 S.F. with 8' Ceilings
Total Enclosed Area 1,440.0 S.F.

COASTAL DESIGNS

cottages for coastal living

web: coastaldesigns.com
email: designer@coastaldesigns.com

Copyright © 2003-2024, all rights reserved by Coastal Designs.
This plan depicts a sketch plan, designer reserves the right to make changes and modifications for improvements. Measurements and dimensions are approximate.

HATTERAS 4034-6E

4,034.4 Square Feet Living Area
44'-0" wide x 57'-0" deep x 44'-9" high

| | |
|--------------------------|------------------------------|
| Ground Floor | 263.7 S.F. (Unheated) |
| 1st Floor | 1,407.7 S.F. (Heated) |
| 2nd Floor | 1,407.7 S.F. (Heated) |
| 3rd Floor | 1,219.0 S.F. (Heated) |
| Total Heated Area | 4,034.4 S.F. (Heated) |

6 Bedrooms
7 Baths
Elevator