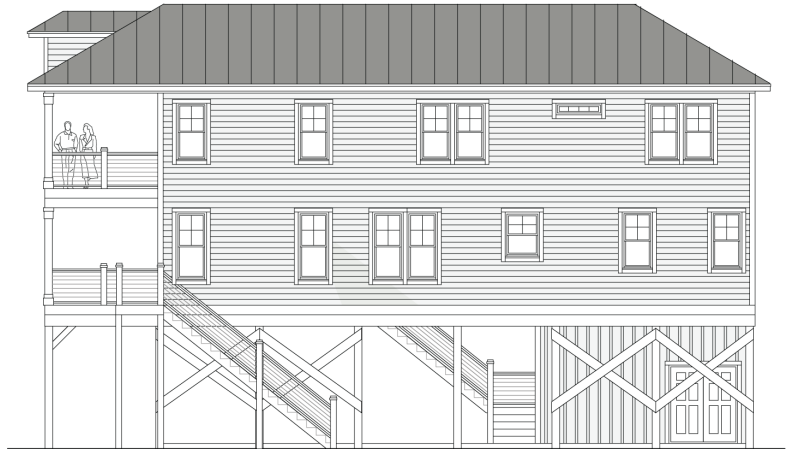


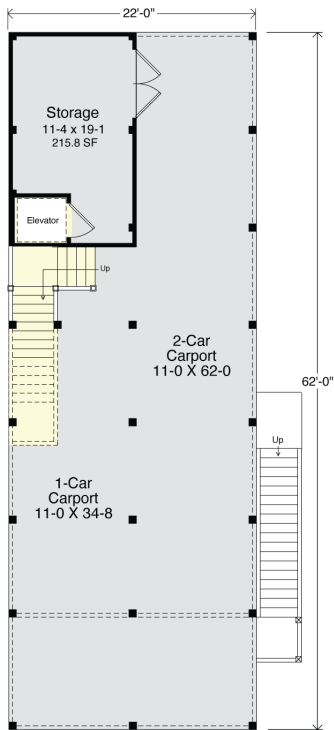
# PORTSIDE 2288-4E



**STREET FRONT**

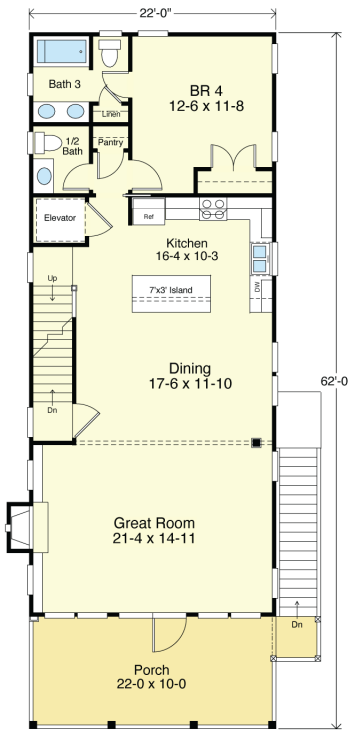


**RIGHT SIDE**



**FIRST FLOOR PLAN**

Carport 1,149.6 SF, Storage 215.8 SF  
Footprint Area 1,365.4 SF  
9'-0" Ceiling Height



**SECOND FLOOR PLAN**

1,144.0 S.F.  
9'-0" Ceiling Height

## COASTAL DESIGNS

cottages for coastal living

web: [coastaldesigns.com](http://coastaldesigns.com)  
email: [designer@coastaldesigns.com](mailto:designer@coastaldesigns.com)

Copyright © 2003-2024, all rights reserved by Coastal Designs.  
This plan depicts a sketch plan, designer reserves the right to make changes and modifications for improvements. Measurements and dimensions are approximate.

## PORTSIDE 2288-4E

2,288 Square Feet Living Area  
22'-0" wide x 62'-0" deep x 39'-2" high

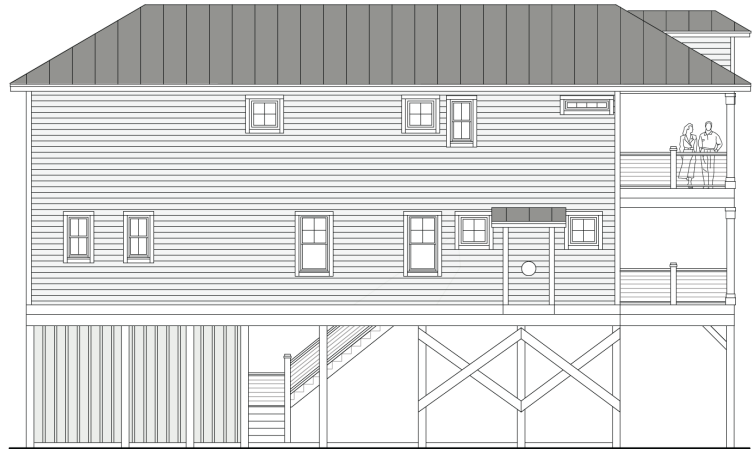
Ground Floor	215.8 S.F.
1st Floor	1,144.0 S.F.
2nd Floor	1,144.0 S.F.
<b>Total</b>	<b>2,288.0 S.F.</b>

4 Bedrooms  
3 1/2 Baths  
Elevator

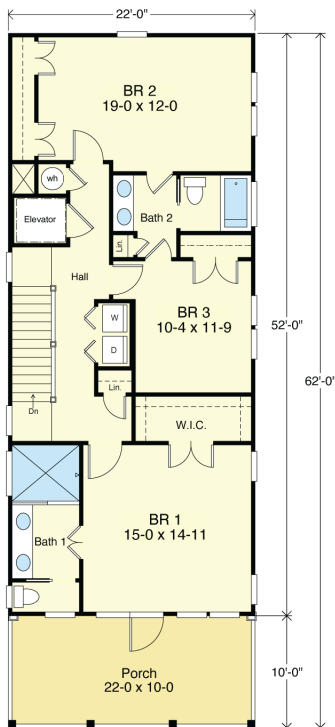
# PORTSIDE 2288-4E



**REAR**



**LEFT SIDE**



**THIRD FLOOR PLAN**

1,144.0 S.F.

9'-0" Ceiling Height

## COASTAL DESIGNS

cottages for coastal living

web: [coastaldesigns.com](http://coastaldesigns.com)

email: [designer@coastaldesigns.com](mailto:designer@coastaldesigns.com)

Copyright © 2003-2024, all rights reserved by Coastal Designs.  
This plan depicts a sketch plan, designer reserves the right to make changes and modifications for improvements. Measurements and dimensions are approximate.

## PORTSIDE 2288-4E

2,288 Square Feet Living Area

22'-0" wide x 62'-0" deep x 39'-2" high

Ground Floor	215.8 S.F.
1st Floor	1,144.0 S.F.
2nd Floor	1,144.0 S.F.
<b>Total</b>	<b>2,288.0 S.F.</b>

4 Bedrooms  
3 1/2 Baths  
Elevator