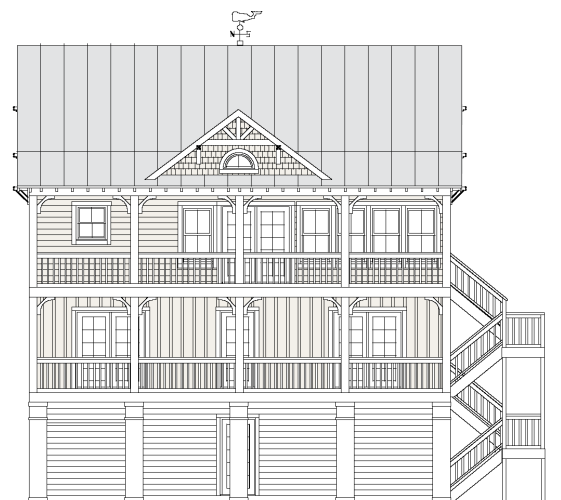
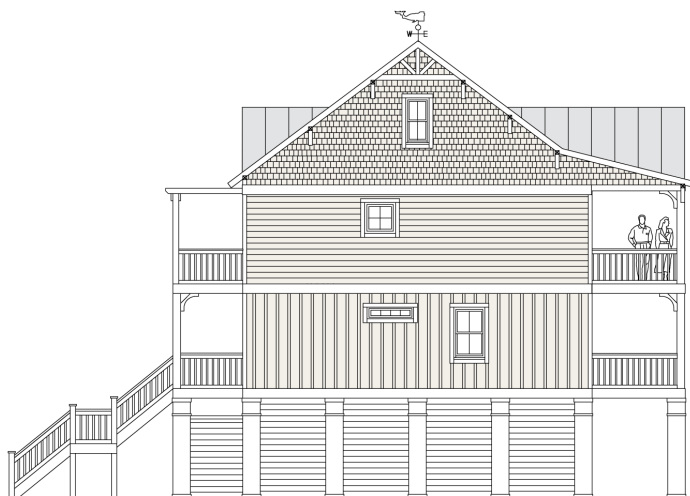


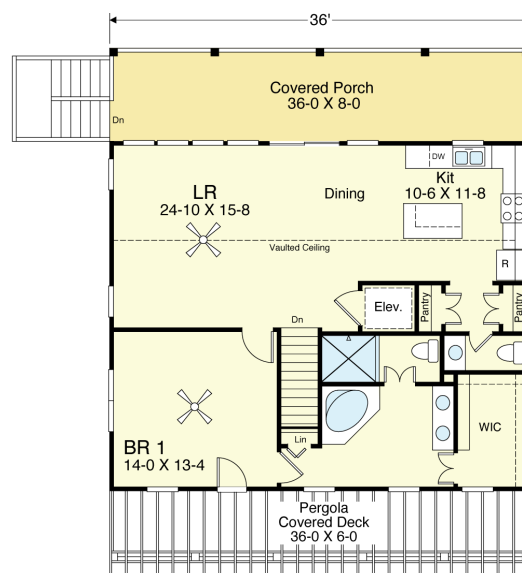
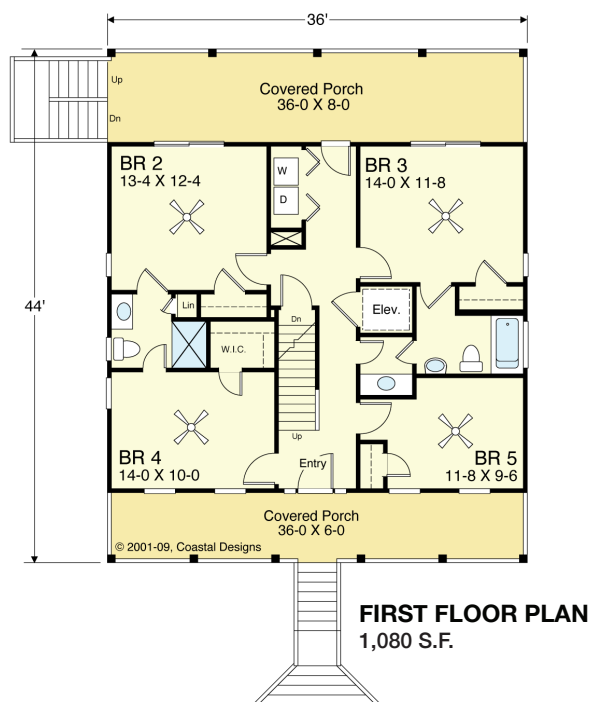
WRIGHTSVILLE 2160-5E



WATER FRONT



RIGHT SIDE



COASTAL DESIGNS

cottages for coastal living

web: coastaldesigns.com
email: designer@coastaldesigns.com

Copyright © 2003-2024, all rights reserved by Coastal Designs.
This plan depicts a sketch plan, designer reserves the right to make changes and modifications for improvements. Measurements and dimensions are approximate.

WRIGHTSVILLE 2160-5E

2,160 Square Feet Living Area
36'-0" wide x 44'-0" deep x 39'-4" high

1st Floor	1,080.0 S.F.
2nd Floor	1,080.0 S.F.
Total	2,160.0 S.F.
Porches	1,008.0 S.F.

5 Bedrooms
3 1/2 Baths
Elevator

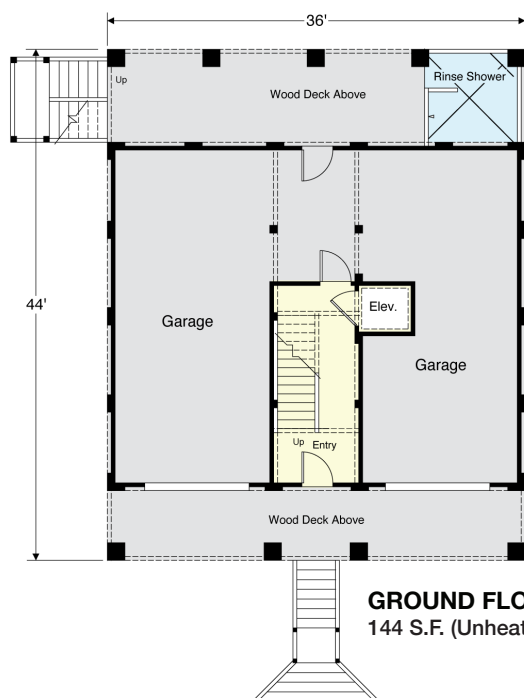
WRIGHTSVILLE 2160-5E



STREET FRONT



LEFT SIDE



GROUND FLOOR PLAN
144 S.F. (Unheated)

COASTAL DESIGNS

cottages for coastal living

web: coastaldesigns.com
email: designer@coastaldesigns.com

Copyright © 2003-2024, all rights reserved by Coastal Designs.
This plan depicts a sketch plan, designer reserves the right to make changes and modifications for improvements. Measurements and dimensions are approximate.

WRIGHTSVILLE 2160-5E

2,160 Square Feet Living Area
36'-0" wide x 44'-0" deep x 39'-4" high

1st Floor	1,080.0 S.F.	5 Bedrooms
2nd Floor	1,080.0 S.F.	3 1/2 Baths
Total	2,160.0 S.F.	Elevator
Porches	1,008.0 S.F.	