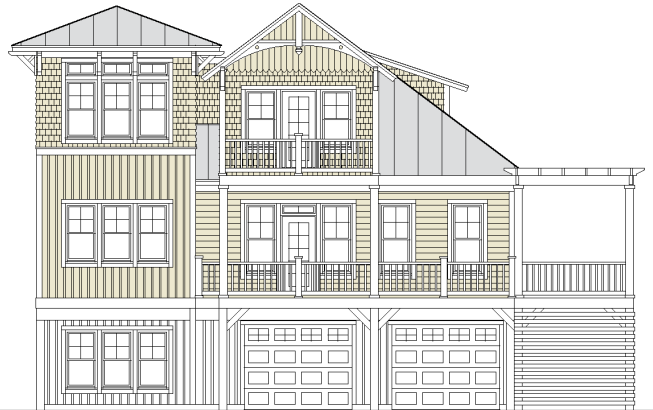


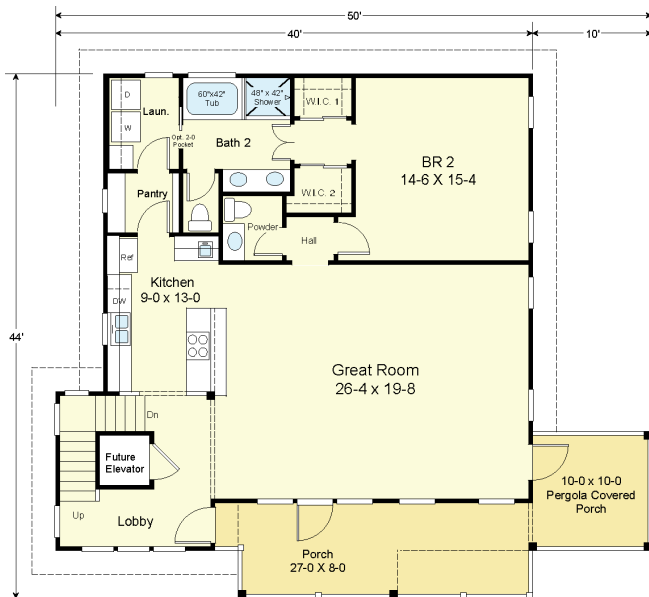
CEDAR POINT 2893-4E



STREET FRONT

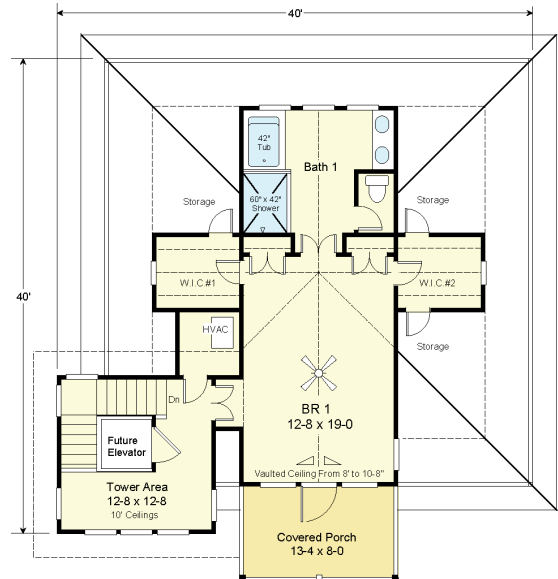


RIGHT SIDE



FIRST FLOOR PLAN

9' Ceilings
 Heated Area 1,386.7 S.F.
 Deck/Porch Area 305.3 S.F.



SECOND FLOOR PLAN LOFT BR & TOWER LEVEL

8' to 10'-8" Vaulted in Bedroom #1, 10' Ceilings in Tower
 Loft/Attic Area 562.2 S.F.
 Lookout Tower Area 177.8 S.F.
 Total 2nd Floor Area 740.0 S.F.
 Deck/Porch Area 106.7 S.F.

COASTAL DESIGNS

cottages for coastal living

web: coastaldesigns.com
 email: designer@coastaldesigns.com

Copyright © 2003-2024, all rights reserved by Coastal Designs.
 This plan depicts a sketch plan, designer reserves the right to make changes and modifications for improvements. Measurements and dimensions are approximate.

CEDAR POINT 2893-4E

2,892.6 Square Feet Living Area
 50'-0" wide x 44'-0" deep x 34'-6" high

Stair & Elevator Tower	177.8 S.F.	4 Bedrooms 3 1/2 Baths Elevator
Ground Floor Bonus	588.1 S.F.	
1st Floor	1,386.7 S.F.	
2nd Floor	562.2 S.F.	
Lookout Tower	177.8 S.F.	
Total	2,892.6 S.F.	

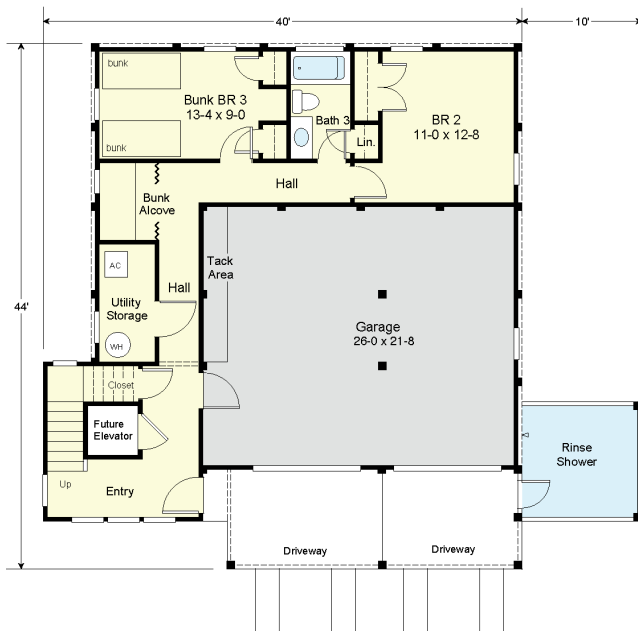
CEDAR POINT 2893-4E



REAR



LEFT SIDE



GROUND FLOOR PLAN

8' Ceilings
 Stair & Elevator Tower 177.8 S.F.
 Bonus Area 588.1 S.F.
 Garage Area 579.3 S.F.

COASTAL DESIGNS

cottages for coastal living

web: coastaldesigns.com
 email: designer@coastaldesigns.com

Copyright © 2003-2024, all rights reserved by Coastal Designs.
 This plan depicts a sketch plan, designer reserves the right to make changes and modifications for improvements. Measurements and dimensions are approximate.

CEDAR POINT 2893-4E

2,892.6 Square Feet Living Area
 50'-0" wide x 44'-0" deep x 34'-6" high

Stair & Elevator Tower	177.8 S.F.	4 Bedrooms 3 1/2 Baths Elevator
Ground Floor Bonus	588.1 S.F.	
1st Floor	1,386.7 S.F.	
2nd Floor	562.2 S.F.	
Lookout Tower	177.8 S.F.	
Total	2,892.6 S.F.	