

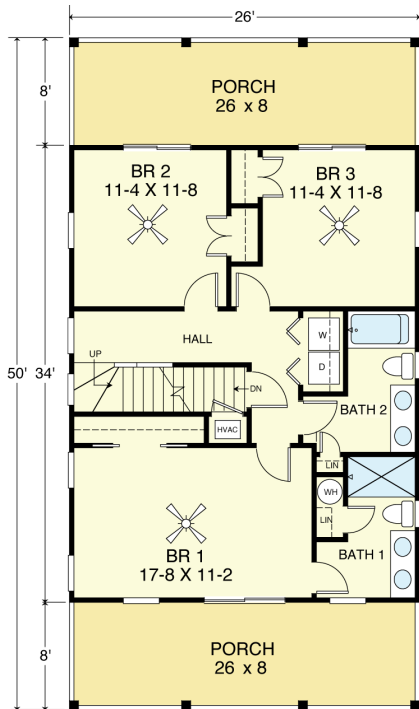
SURF 1768-4



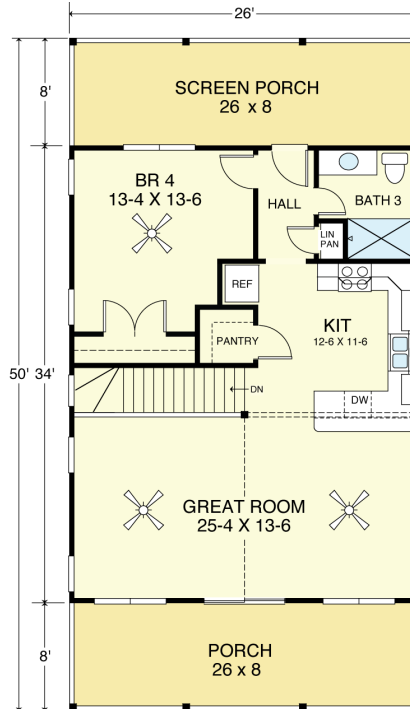
WATER FRONT



RIGHT SIDE



FIRST FLOOR PLAN
8'-0" Ceilings



SECOND FLOOR PLAN
9'-0" + Vaulted Ceilings

COASTAL DESIGNS

cottages for coastal living

web: coastaldesigns.com
email: designer@coastaldesigns.com

Copyright © 2003-2024, all rights reserved by Coastal Designs.
This plan depicts a sketch plan, designer reserves the right to make changes and modifications for improvements. Measurements and dimensions are approximate.

SURF 1768-4

1,768 Square Feet Living Area
26'-0" wide x 50'-0" deep x 39'-0" high

1st Floor	884.0 S.F.	4 Bedrooms 3 Baths
2nd Floor	884.0 S.F.	
Total Area	1,768.0 S.F.	

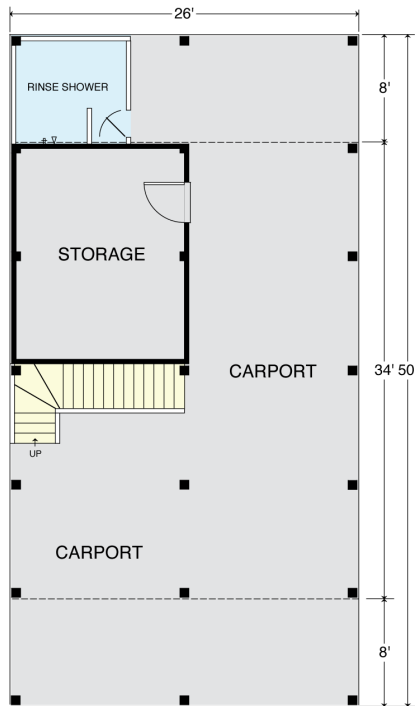
SURF 1768-4



REAR



LEFT SIDE



GROUND FLOOR PLAN
10'-0" Ceilings

COASTAL DESIGNS

cottages for coastal living

web: coastaldesigns.com
email: designer@coastaldesigns.com

Copyright © 2003-2024, all rights reserved by Coastal Designs.
This plan depicts a sketch plan, designer reserves the right to make changes and modifications for improvements. Measurements and dimensions are approximate.

SURF 1768-4

1,768 Square Feet Living Area
26'-0" wide x 50'-0" deep x 39'-0" high

1st Floor	884.0 S.F.	4 Bedrooms 3 Baths
2nd Floor	884.0 S.F.	
Total Area	1,768.0 S.F.	