

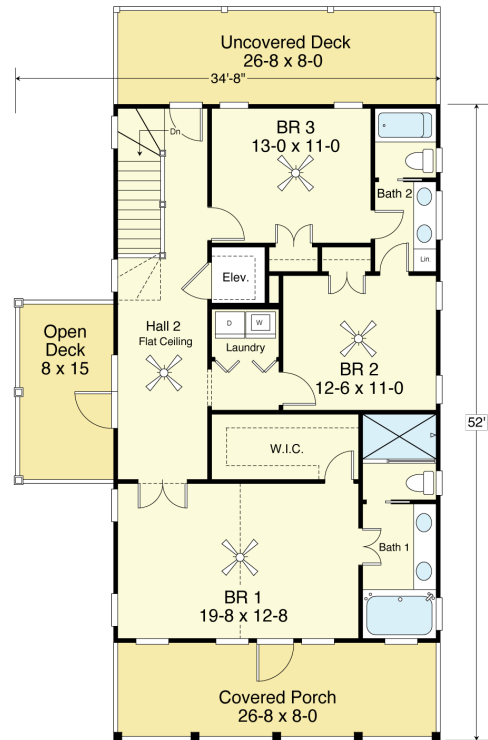
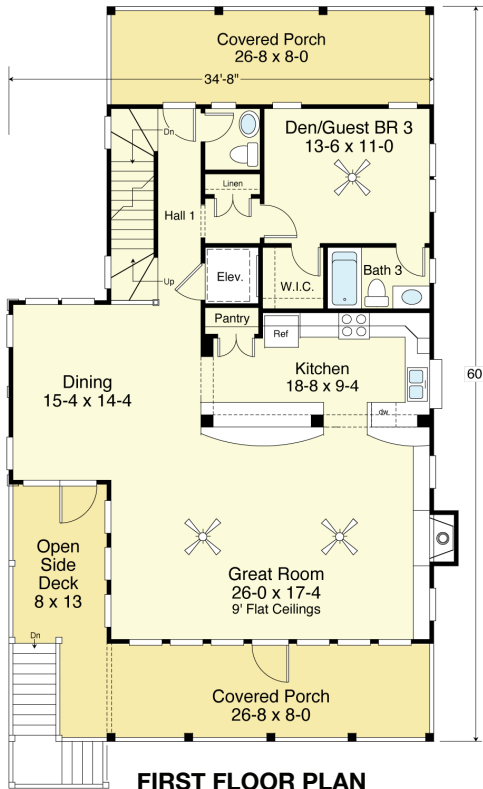
# SEALANE 2467-4E



**STREET FRONT**



**REAR**



## COASTAL DESIGNS

cottages for coastal living

web: [coastaldesigns.com](http://coastaldesigns.com)  
 email: [designer@coastaldesigns.com](mailto:designer@coastaldesigns.com)

Copyright © 2003-2024, all rights reserved by Coastal Designs.  
 This plan depicts a sketch plan, designer reserves the right to make changes and modifications for improvements. Measurements and dimensions are approximate.

## SEALANE 2467-4E

2,467 (3,053) Square Feet Living Area  
 34'-8" wide x 60'-0" deep x 35'-0" high

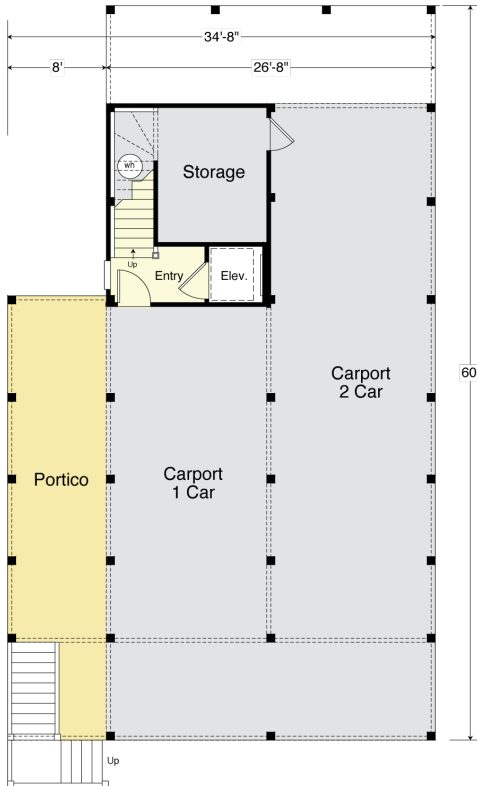
Ground Floor Foyer	83.9 S.F.	1st Floor	1,293.4 S.F.
Storage & Shower	137.1 S.F.	2nd Floor	1,173.3 S.F.
Carport	952.3 S.F.	Total Area	2,466.7 S.F.
Portico	290.0 S.F.		

4 (6) Bedrooms  
 3 (4) Baths  
 Optional Elevator

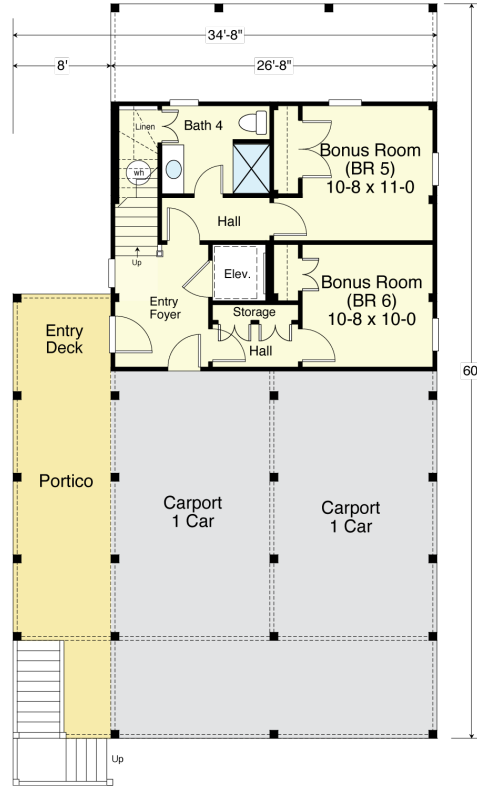
# SEALANE 2467-4E



**LEFT SIDE**



**GROUND FLOOR PLAN**  
83.9 S.F.  
8'-0" Ceiling Heights



**OPTIONAL GROUND FLOOR PLAN**  
586.7 S.F.  
8'-0" Ceiling Heights

## COASTAL DESIGNS

cottages for coastal living

web: [coastaldesigns.com](http://coastaldesigns.com)  
email: [designer@coastaldesigns.com](mailto:designer@coastaldesigns.com)

Copyright © 2003-2024, all rights reserved by Coastal Designs.  
This plan depicts a sketch plan, designer reserves the right to make changes and modifications for improvements. Measurements and dimensions are approximate.

## SEALANE 2467-4E

2,467 (3,053) Square Feet Living Area  
34'-8" wide x 60'-0" deep x 35'-0" high

Ground Floor Foyer	83.9 S.F.	1st Floor	1,293.4 S.F.
Storage & Shower	137.1 S.F.	2nd Floor	1,173.3 S.F.
Carport	952.3 S.F.	Total Area	2,466.7 S.F.
Portico	290.0 S.F.		

4 (6) Bedrooms
3 (4) Baths
Optional Elevator