

PORPOISE 4248-7E



WATER FRONT

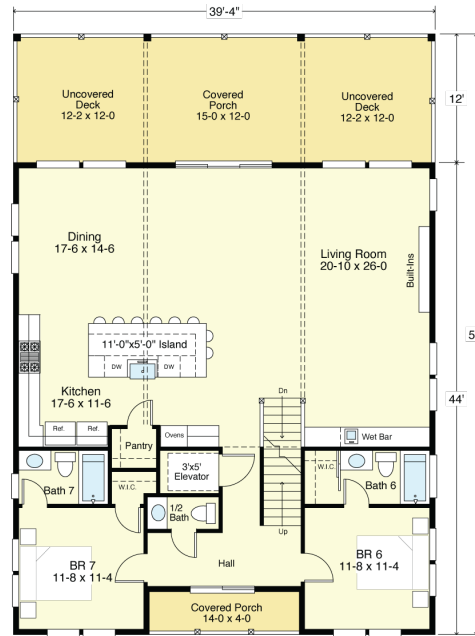


RIGHT SIDE



FIRST FLOOR PLAN

Living Area 1,674.6 S.F.
 Ocean Porch Area 422.6 S.F.
 Back Porch Area 56.0 S.F.
 9'-1 1/2" Ceilings



SECOND FLOOR PLAN

Living Area 1,674.6 S.F.
 Ocean Porch Area 422.6 S.F.
 Back Porch Area 56.0 S.F.
 9'-1 1/2" Ceilings

COASTAL DESIGNS

cottages for coastal living

web: coastaldesigns.com
 email: designer@coastaldesigns.com

Copyright © 2003-2024, all rights reserved by Coastal Designs.
 This plan depicts a sketch plan, designer reserves the right to make changes and modifications for improvements. Measurements and dimensions are approximate.

PORPOISE 4248-7E

4248.7 Square Feet Living Area
 39'-4" wide x 56'-0" deep x 46'-10" high

Ground Floor	299.5 S.F.
1st Floor	1,674.6 S.F.
2nd Floor	1,674.6 S.F.
3rd Floor	600.0 S.F.
Total	4,248.7 S.F.

7 Bedrooms
 7 1/2 Baths
 Elevator

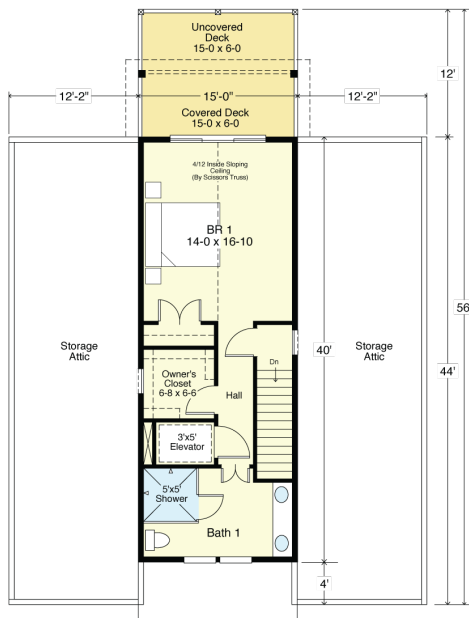
PORPOISE 4248-7E



STREET FRONT

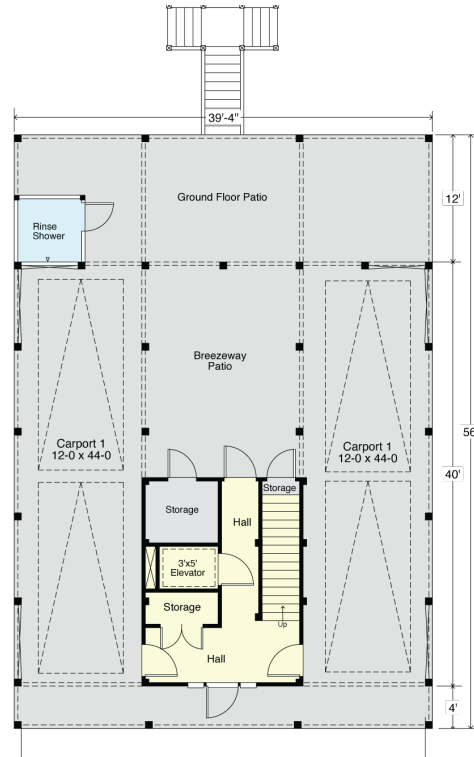


LEFT SIDE



THIRD FLOOR PLAN

Living Area 600.0 S.F.
 Ocean Porch Area 176.0 S.F.
 9'-1 1/2" + Vaulted Ceilings



GROUND FLOOR PLAN

Entry Hall 207.5 S.F.
 Storage Area 92.0 S.F.
 Total Enclosed Area 299.5 S.F.
 9'-1 1/2" Ceilings

COASTAL DESIGNS

cottages for coastal living

web: coastaldesigns.com
 email: designer@coastaldesigns.com

Copyright © 2003-2024, all rights reserved by Coastal Designs.
 This plan depicts a sketch plan, designer reserves the right to make changes and modifications for improvements. Measurements and dimensions are approximate.

PORPOISE 4248-7E

4248.7 Square Feet Living Area
 39'-4" wide x 56'-0" deep x 46'-10" high

Ground Floor	299.5 S.F.
1st Floor	1,674.6 S.F.
2nd Floor	1,674.6 S.F.
3rd Floor	600.0 S.F.
Total	4,248.7 S.F.

7 Bedrooms
 7 1/2 Baths
 Elevator