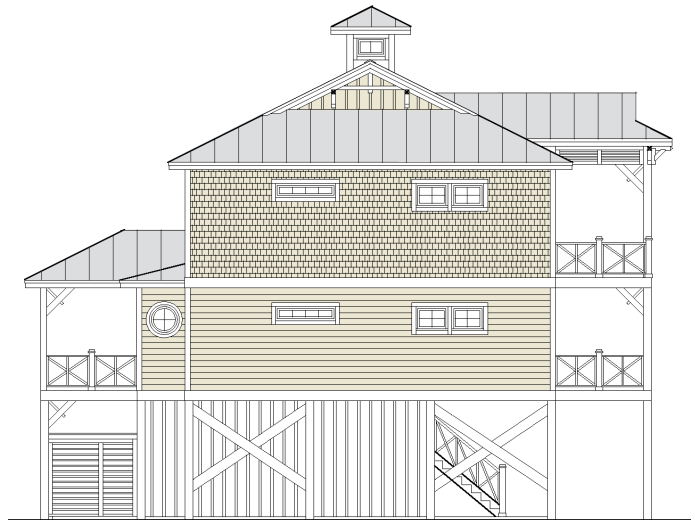


OCEAN GROVE 2229-4E



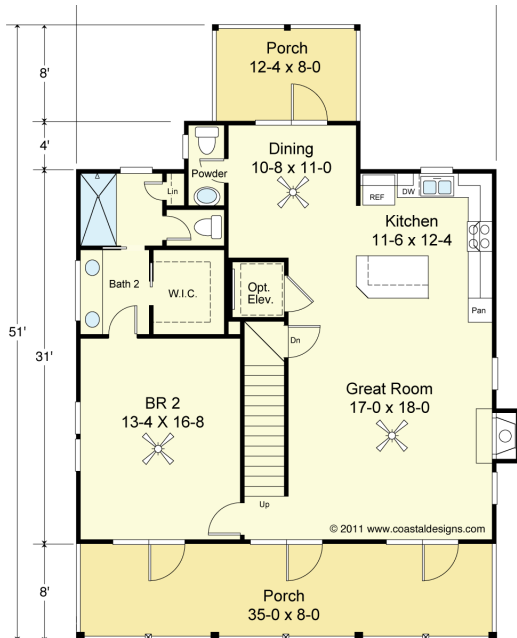
FRONT

© 2011 www.coastaldesigns.com



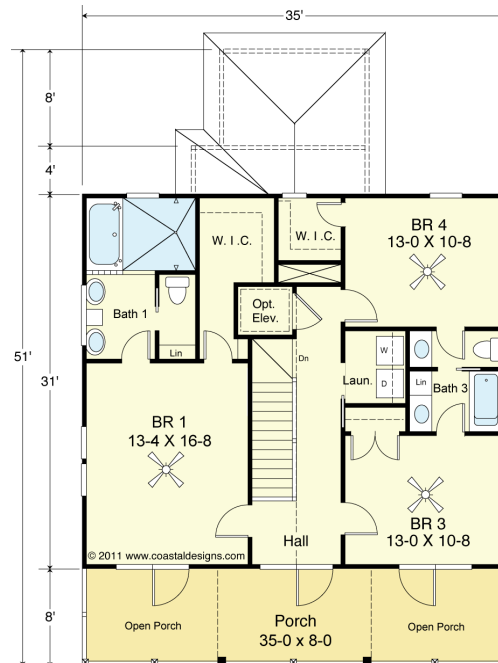
RIGHT SIDE

© 2011 www.coastaldesigns.com



FIRST FLOOR PLAN

Living 1,143.7 S.F.
Porches 378.7 S.F.
9' Ceilings



SECOND FLOOR PLAN

Living 1,085.0 S.F.
Porches 280.0 S.F.
9' Ceilings

COASTAL DESIGNS

cottages for coastal living

web: coastaldesigns.com
email: designer@coastaldesigns.com

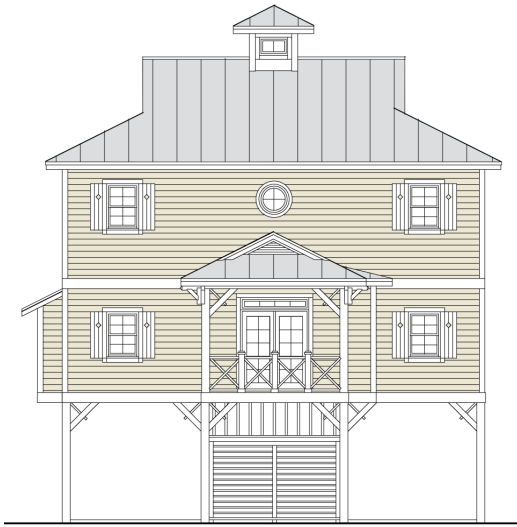
Copyright © 2003-2024, all rights reserved by Coastal Designs.
This plan depicts a sketch plan, designer reserves the right to make changes and modifications for improvements. Measurements and dimensions are approximate.

OCEAN GROVE 2229-4E

2,228.7 Square Feet Living Area
35'-0" wide x 51'-0" deep x 38'-4" high

1st Floor	1,085.0 S.F.	4 Bedrooms (2 Main Bedrooms) 3 1/2 Baths Elevator
2nd Floor	1,143.7 S.F.	
Total (Heated)	2,228.7 S.F.	

OCEAN GROVE 2229-4E



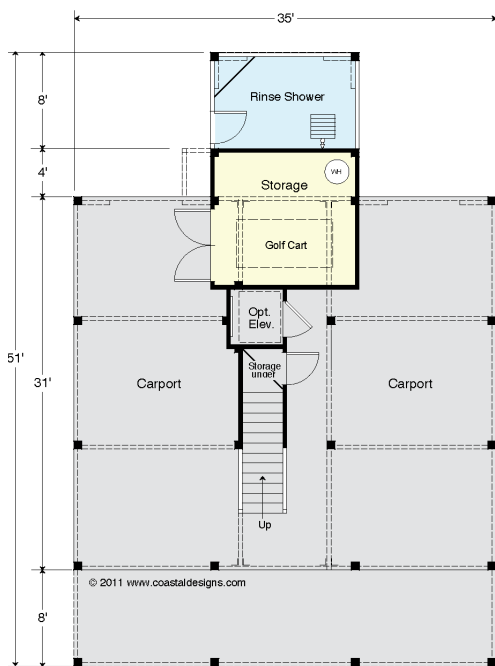
REAR

© 2011 www.coastaldesigns.com



LEFT SIDE

© 2011 www.coastaldesigns.com



© 2011 www.coastaldesigns.com

GROUND FLOOR PLAN

Stairs & Elevator 79.3 S.F.
 Storage 143.9 S.F.
 Rinse Shower 98.7 S.F.
 Total "Footprint" Area 1,522.3 S.F.
 10' Ceilings

COASTAL DESIGNS

cottages for coastal living

web: coastaldesigns.com
 email: designer@coastaldesigns.com

Copyright © 2003-2024, all rights reserved by Coastal Designs.
 This plan depicts a sketch plan, designer reserves the right to make changes and modifications for improvements. Measurements and dimensions are approximate.

OCEAN GROVE 2229-4E

2,228.7 Square Feet Living Area
 35'-0" wide x 51'-0" deep x 38'-4" high

1st Floor	1,085.0 S.F.	4 Bedrooms (2 Main Bedrooms) 3 1/2 Baths Elevator
2nd Floor	1,143.7 S.F.	
Total (Heated)	2,228.7 S.F.	