

SEA GULL 928-3

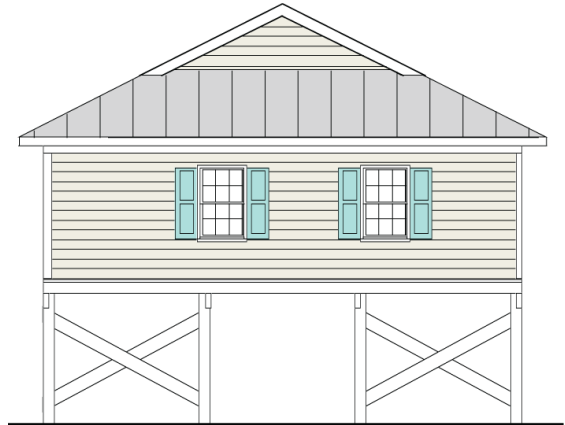
A CAROLINA ISLANDS "SUMMER CLASSIC"

This cottage has been one of the most popular bungalow cottages ever! An open Great Room puts everyone in the center of activity. Just right for a small family, it makes a perfect weekend retreat or a great rental! Its small size makes it easy to clean and care for - giving you more time to enjoy your vacation!

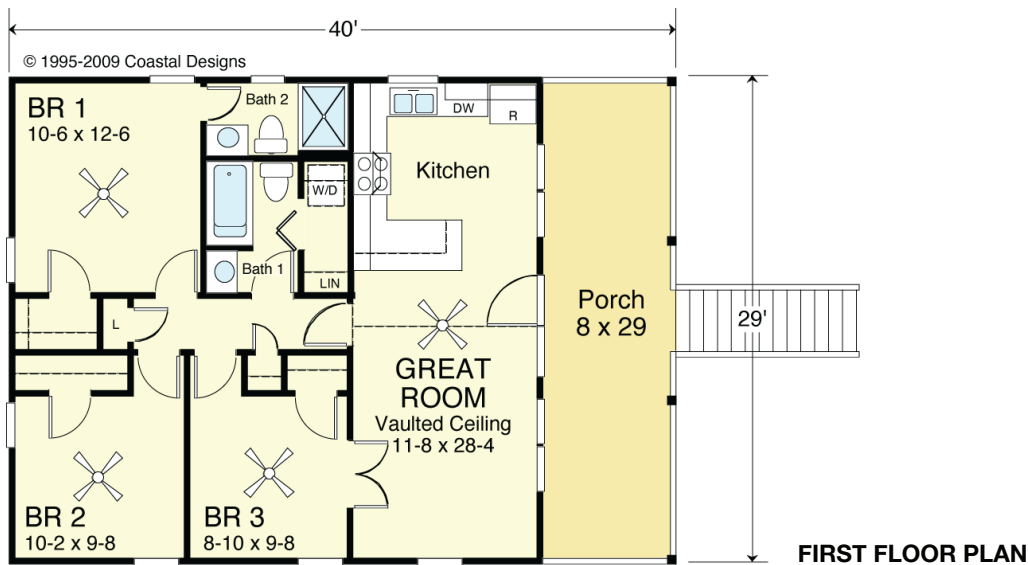


WATER FRONT

© 1995-2009, Coastal Designs



REAR



COASTAL DESIGNS

cottages for coastal living

web: coastaldesigns.com
 email: designer@coastaldesigns.com

Copyright © Coastal Designs, all rights reserved.
 This plan depicts a sketch plan, designer reserves the right to make changes and modifications for improvements. Measurements and dimensions are approximate.

SEA GULL 928-3

928 Square Feet Living Area
 29'-0" wide x 40'-0" deep x 25'-6" high

First Floor (Heated)	928.0 S.F.	3 Bedrooms 2 Baths One Level
Porch	232.0 S.F.	

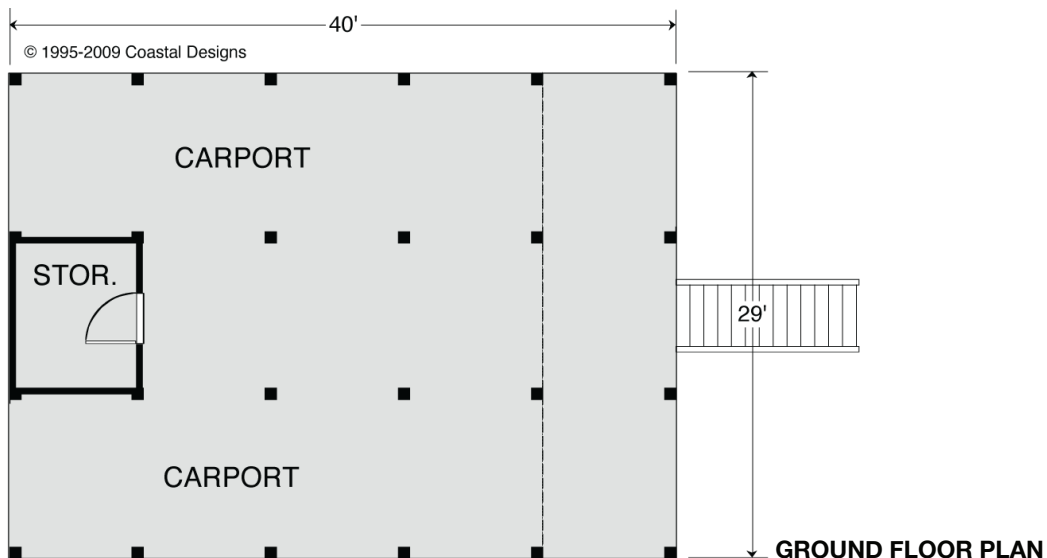
SEA GULL 928-3

A CAROLINA ISLANDS "SUMMER CLASSIC"

This cottage has been one of the most popular bungalow cottages ever! An open Great Room puts everyone in the center of activity. Just right for a small family, it makes a perfect weekend retreat or a great rental! Its small size makes it easy to clean and care for - giving you more time to enjoy your vacation!



LEFT SIDE



COASTAL DESIGNS

cottages for coastal living

web: coastaldesigns.com
email: designer@coastaldesigns.com

Copyright © Coastal Designs, all rights reserved.
This plan depicts a sketch plan, designer reserves the right to make changes and modifications for improvements. Measurements and dimensions are approximate.

SEA GULL 928-3

928 Square Feet Living Area
29'-0" wide x 40'-0" deep x 25'-6" high

First Floor (Heated)
Porch

928.0 S.F.
232.0 S.F.

3 Bedrooms
2 Baths
One Level