

WRIGHTSVILLE 1962-4



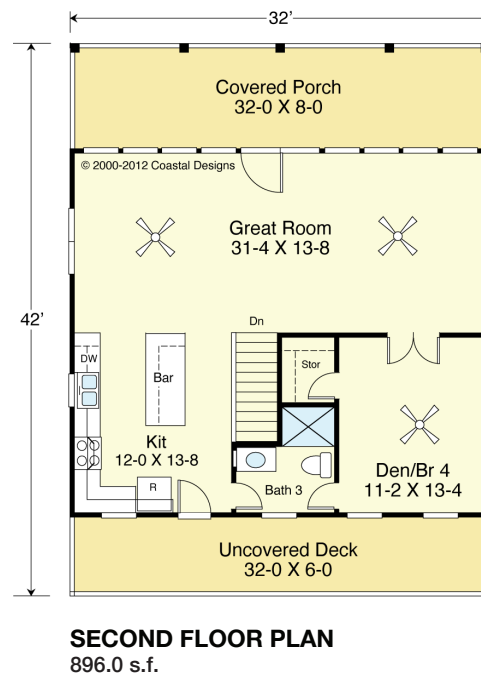
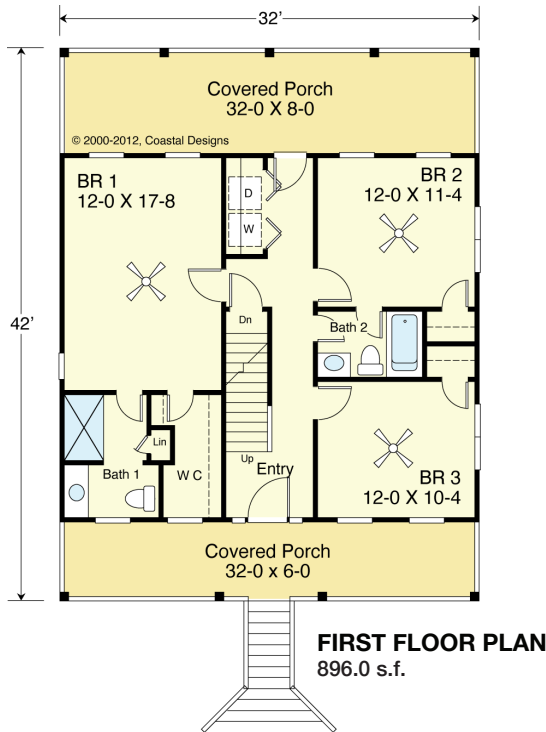
WATERFRONT

© 2000-2012 Coastal Designs



RIGHT SIDE

© 2000-2012 Coastal Designs



COASTAL DESIGNS

cottages for coastal living

web: coastaldesigns.com
email: designer@coastaldesigns.com

Copyright © 2003-2024, all rights reserved by Coastal Designs. This plan depicts a sketch plan, designer reserves the right to make changes and modifications for improvements. Measurements and dimensions are approximate.

WRIGHTSVILLE 1962-4

1,962 Square Feet Living Area
32'-0" wide x 42'-0" deep x 38'-6" high

Ground Floor (Unheated)	170.0 S.F.	4 Bedrooms 3 Baths
1st Floor	896.0 S.F.	
2nd Floor	896.0 S.F.	
Total	1,962.0 S.F.	

WRIGHTSVILLE 1962-4



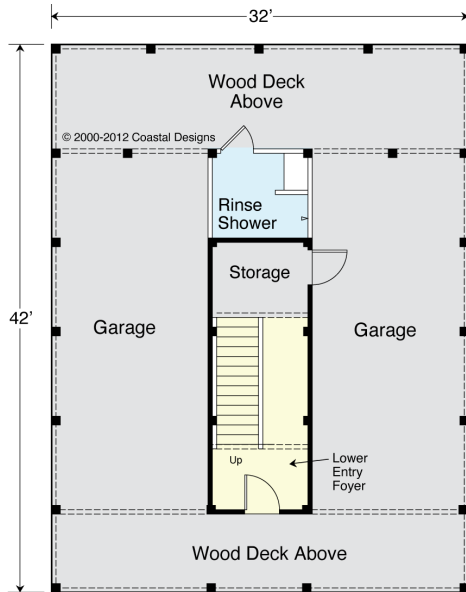
STREET FRONT

© 2000-2012 Coastal Designs



LEFT SIDE

© 2000-2012 Coastal Designs



GROUND FLOOR PLAN

170.0 s.f. (Unheated)

COASTAL DESIGNS

cottages for coastal living

web: coastaldesigns.com
 email: designer@coastaldesigns.com

Copyright © 2003-2024, all rights reserved by Coastal Designs. This plan depicts a sketch plan, designer reserves the right to make changes and modifications for improvements. Measurements and dimensions are approximate.

WRIGHTSVILLE 1962-4

1,962 Square Feet Living Area
 32'-0" wide x 42'-0" deep x 38'-6" high

Ground Floor (Unheated)	170.0 S.F.	4 Bedrooms 3 Baths
1st Floor	896.0 S.F.	
2nd Floor	896.0 S.F.	
Total	1,962.0 S.F.	