

HAMPTON 4157-6E



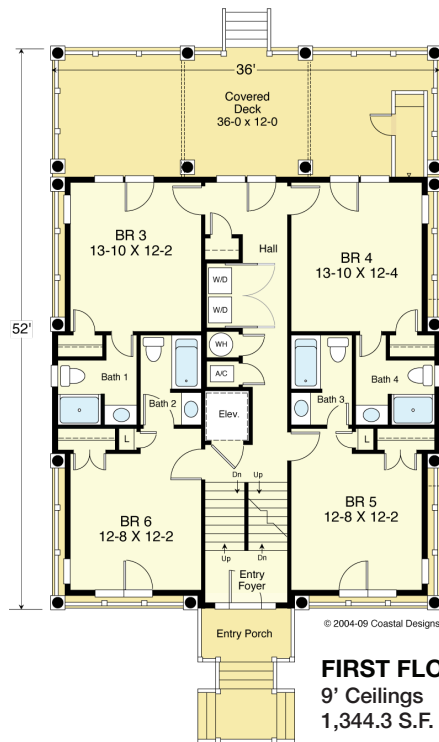
WATER FRONT

© 2004-09 Coastal Designs



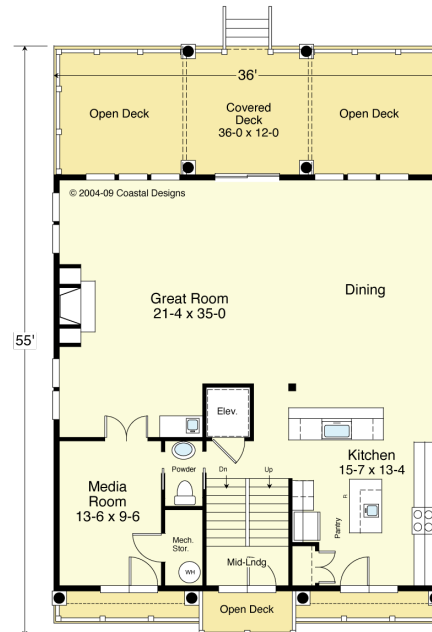
RIGHT SIDE

© 2004-09 Coastal Designs



FIRST FLOOR PLAN
9' Ceilings
1,344.3 S.F.

© 2004-09 Coastal Designs



SECOND FLOOR PLAN
10' Ceilings
1,399.0 S.F.

© 2004-09 Coastal Designs

COASTAL DESIGNS

cottages for coastal living

web: coastaldesigns.com
email: designer@coastaldesigns.com

Copyright © 2003-2024, all rights reserved by Coastal Designs. This plan depicts a sketch plan, designer reserves the right to make changes and modifications for improvements. Measurements and dimensions are approximate.

HAMPTON 4157-6E

4,157 Square Feet Living Area
36'-0" wide x 57'-0" deep x 50'-8" high

Ground Floor	280.5 S.F.
1st Floor	1,344.3 S.F.
2nd Floor	1,399.0 S.F.
3rd Floor	1,133.3 S.F.
Total Heated Area	4,157.1 S.F.

6 Bedrooms
6 1/2 Baths
4-Level with
Elevator
Media Room

HAMPTON 4157-6E



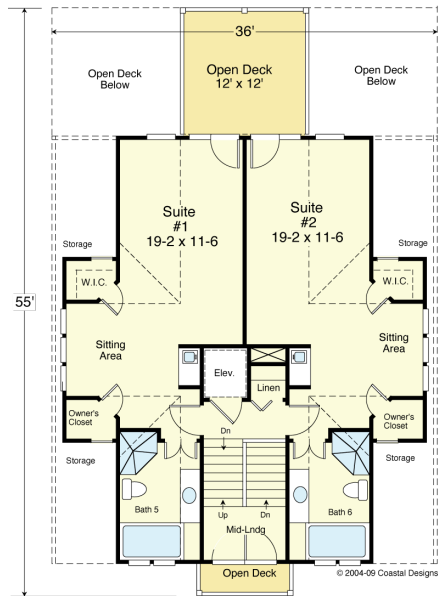
STREET FRONT

© 2004-09 Coastal Designs



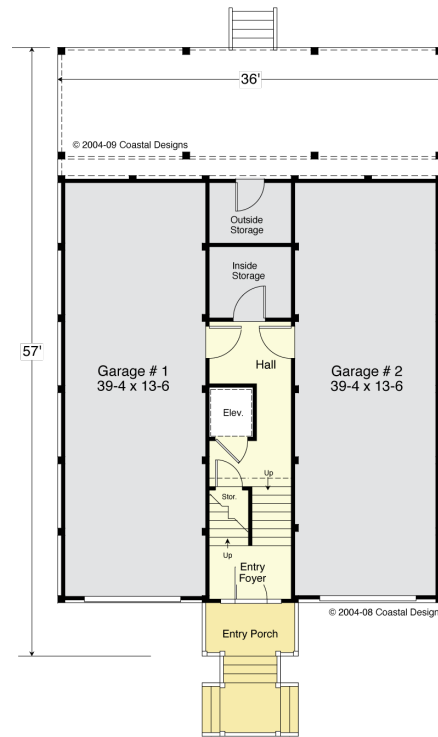
LEFT SIDE

© 2004-09 Coastal Designs



THIRD FLOOR PLAN

7' Vaulted Ceilings to 12'-2" Flat Ceilings
1,133.3 S.F.



GROUND FLOOR PLAN

9' Ceilings
Foyer 280.5 S.F.
Enclosed Area 1,440.0 S.F.

COASTAL DESIGNS

cottages for coastal living

web: coastaldesigns.com
email: designer@coastaldesigns.com

Copyright © 2003-2024, all rights reserved by Coastal Designs.
This plan depicts a sketch plan, designer reserves the right to make changes and modifications for improvements. Measurements and dimensions are approximate.

HAMPTON 4157-6E

4,157 Square Feet Living Area
36'-0" wide x 57'-0" deep x 50'-8" high

Ground Floor	280.5 S.F.
1st Floor	1,344.3 S.F.
2nd Floor	1,399.0 S.F.
3rd Floor	1,133.3 S.F.
Total Heated Area	4,157.1 S.F.

6 Bedrooms
6 1/2 Baths
4-Level with Elevator
Media Room