

WRIGHTSVILLE 2000-5



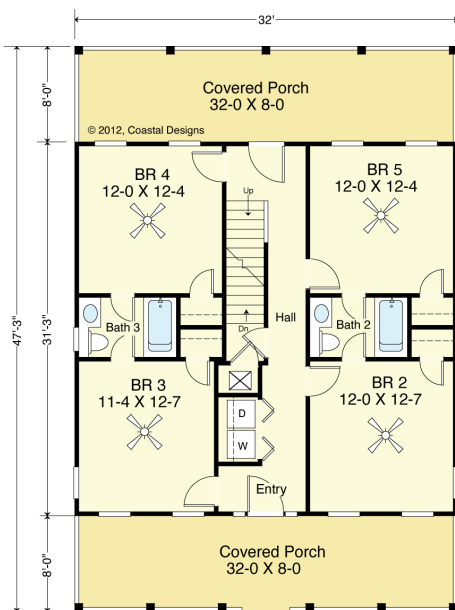
FRONT

© 2012 Coastal Designs

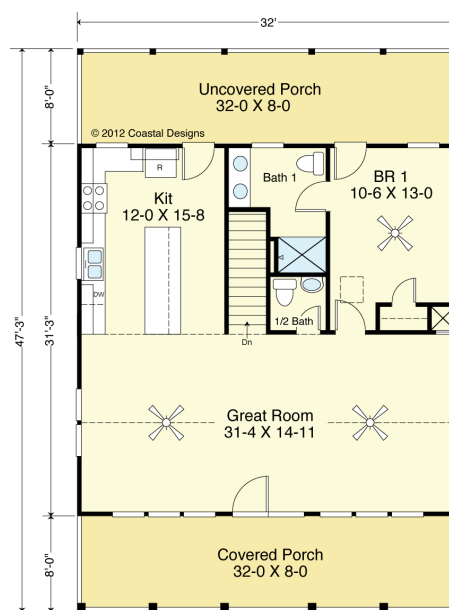


RIGHT SIDE

© 2012 Coastal Designs



FIRST FLOOR PLAN
1,000.0 SF
8'-0" Ceilings



SECOND FLOOR PLAN
1,000.0 S.F.
9'-0" Ceilings

COASTAL DESIGNS

cottages for coastal living

web: coastaldesigns.com
email: designer@coastaldesigns.com

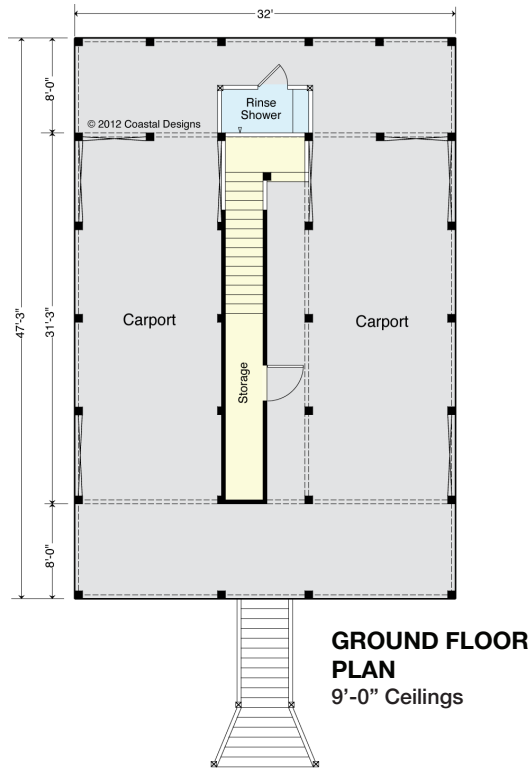
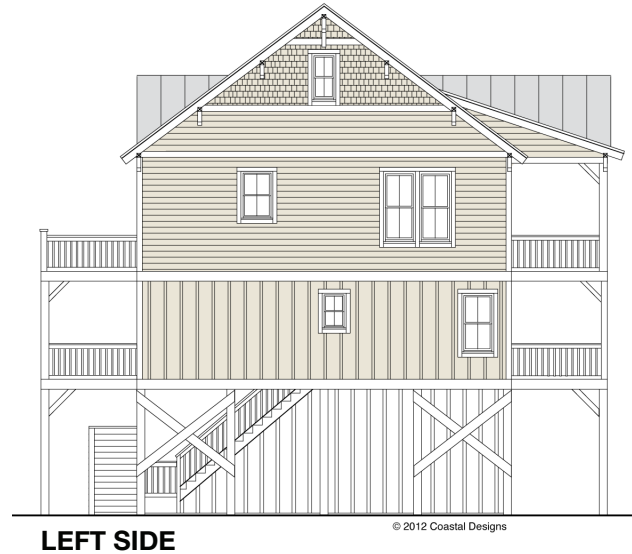
Copyright © 2003-2024, all rights reserved by Coastal Designs. This plan depicts a sketch plan, designer reserves the right to make changes and modifications for improvements. Measurements and dimensions are approximate.

WRIGHTSVILLE 2000-5

2,000 Square Feet Living Area
32'-0" wide x 47'-3" deep x 40'-0" high

Ground Floor Storage	189.6 S.F.	5 Bedrooms 3 1/2 Baths
Covered Impervious Area	1,425.0 S.F.	
1st Floor	1,000.0 S.F.	
2nd Floor	1,000.0 S.F.	
Total	2,000.0 S.F.	

WRIGHTSVILLE 2000-5



COASTAL DESIGNS

cottages for coastal living

web: coastaldesigns.com
email: designer@coastaldesigns.com

Copyright © 2003-2024, all rights reserved by Coastal Designs. This plan depicts a sketch plan, designer reserves the right to make changes and modifications for improvements. Measurements and dimensions are approximate.

WRIGHTSVILLE 2000-5

2,000 Square Feet Living Area
32'-0" wide x 47'-3" deep x 40'-0" high

Ground Floor Storage	189.6 S.F.	5 Bedrooms 3 ½ Baths
Covered Impervious Area	1,425.0 S.F.	
1st Floor	1,000.0 S.F.	
2nd Floor	1,000.0 S.F.	
Total	2,000.0 S.F.	