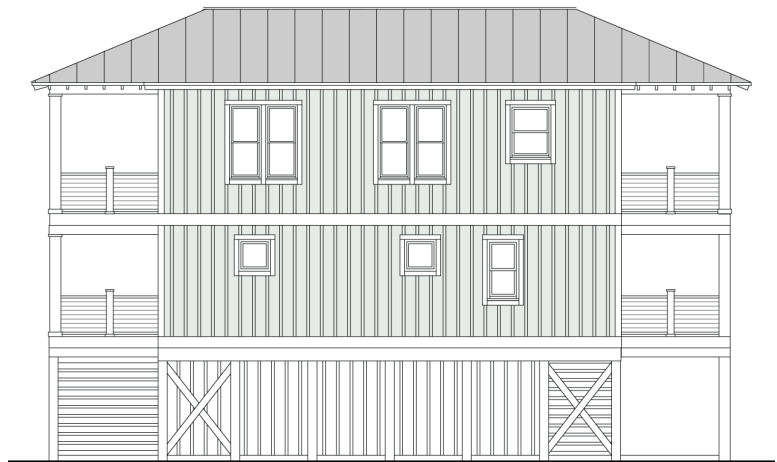


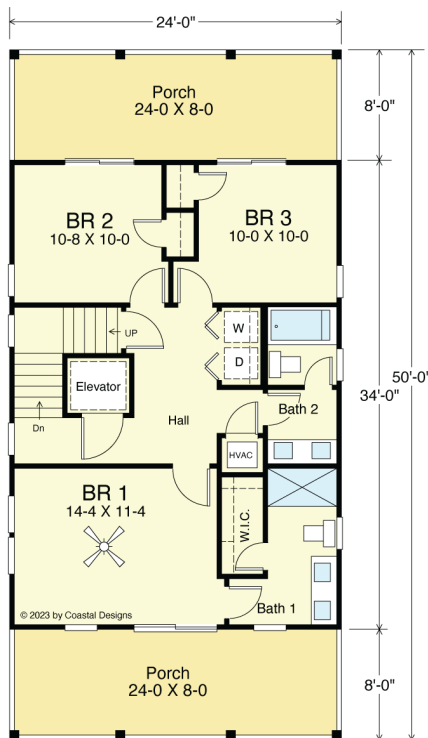
DRIFTWOOD 1632-4E



STREET FRONT



RIGHT SIDE



FIRST FLOOR PLAN

816.0 SF

8'-0" Ceilings



SECOND FLOOR PLAN

816.0 S.F.

9'-0" Flat Ceilings

COASTAL DESIGNS

cottages for coastal living

web: coastaldesigns.com

email: designer@coastaldesigns.com

Copyright © 2003-2024, all rights reserved by Coastal Designs.
This plan depicts a sketch plan, designer reserves the right to make changes and modifications for improvements. Measurements and dimensions are approximate.

DRIFTWOOD 1632-4E

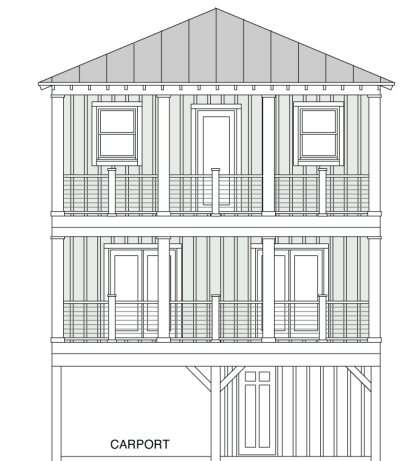
1,632 Square Feet Living Area

24'-0" wide x 50'-0" deep x 33'-6" high

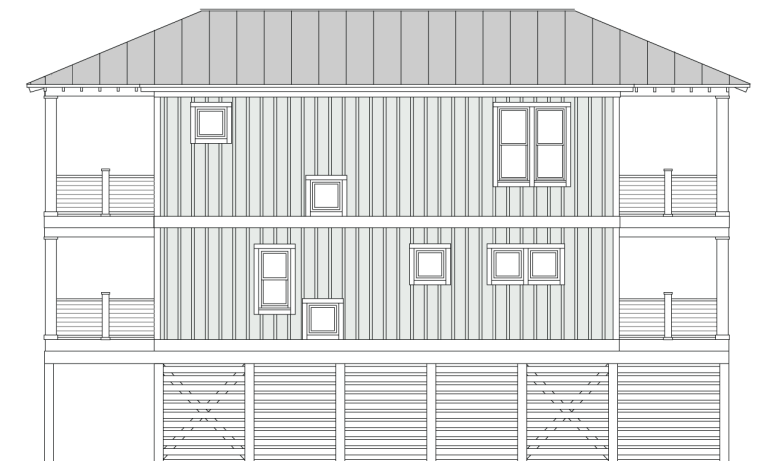
Ground Floor	187.5 S.F.
1st Floor	816.0 S.F.
2nd Floor	816.0 S.F.
Total	1,632.0 S.F.

4 Bedrooms
3 Baths
Elevator

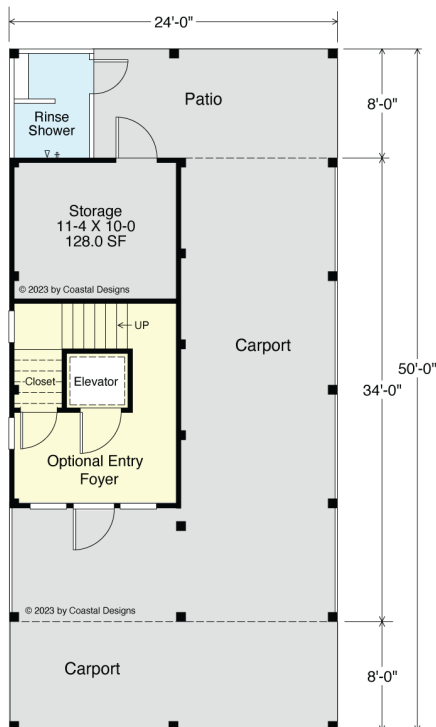
DRIFTWOOD 1632-4E



REAR

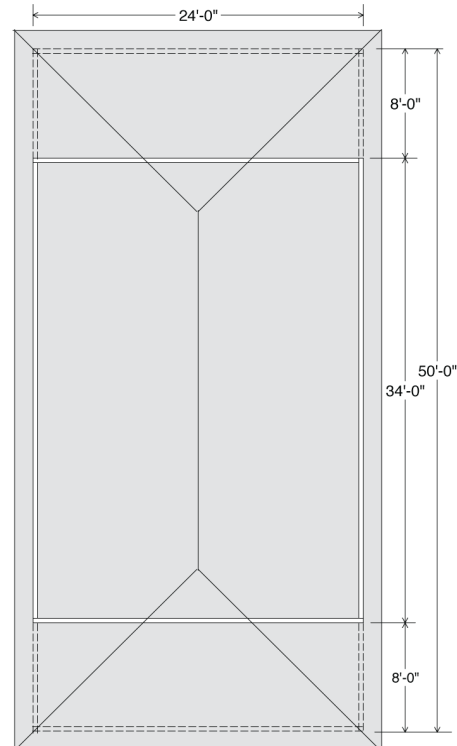


LEFT SIDE



GROUND FLOOR PLAN

Entry 187.5 SF
Storage 133.3 SF



ROOF

9'-0" Flat Ceilings

COASTAL DESIGNS

cottages for coastal living

web: coastaldesigns.com
email: designer@coastaldesigns.com

Copyright © 2003-2024, all rights reserved by Coastal Designs.
This plan depicts a sketch plan, designer reserves the right to make changes and modifications for improvements. Measurements and dimensions are approximate.

DRIFTWOOD 1632-4E

1,632 Square Feet Living Area
24'-0" wide x 50'-0" deep x 33'-6" high

Ground Floor	187.5 S.F.	4 Bedrooms 3 Baths Elevator
1st Floor	816.0 S.F.	
2nd Floor	816.0 S.F.	
Total	1,632.0 S.F.	