

CEDAR POINT 2037-3



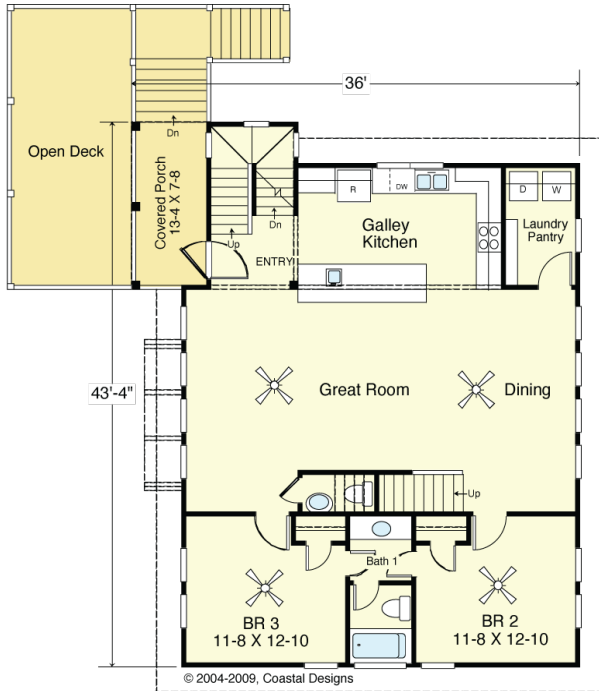
WATER FRONT

© 2004-2009, Coastal Designs



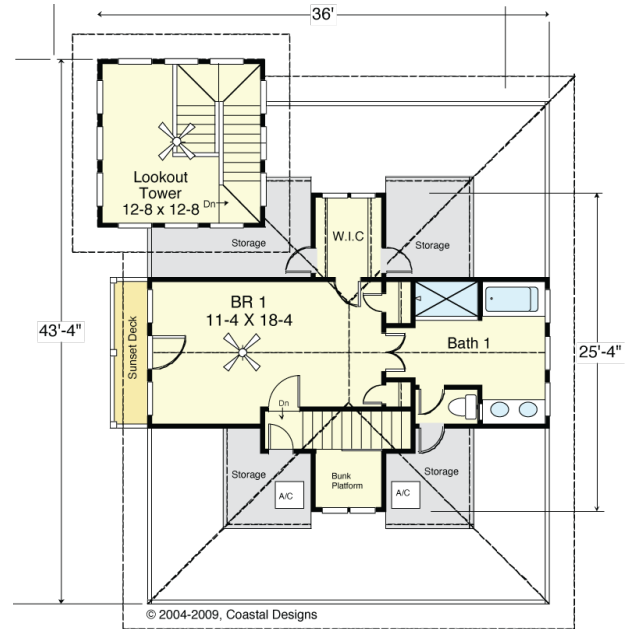
RIGHT SIDE

© 2004-2009, Coastal Designs



FIRST FLOOR PLAN
1,280.7 S.F. (Heated)

© 2004-2009, Coastal Designs



SECOND FLOOR PLAN
LOFT BR & TOWER LEVEL
Loft Bedroom Area 476.3 S.F.
Lookout Tower Area 177.8 S.F.

© 2004-2009, Coastal Designs

COASTAL DESIGNS

cottages for coastal living

web: coastaldesigns.com
email: designer@coastaldesigns.com

Copyright © 2003-2024, all rights reserved by Coastal Designs.
This plan depicts a sketch plan, designer reserves the right to make changes and modifications for improvements. Measurements and dimensions are approximate.

CEDAR POINT 2037-3

2,037 Square Feet Living Area
43'-4" to 52'-8" wide x 36'-0" to 46'-0" deep
Roof height maximum 36'-4" w/ 34'-10" avg. ht.

Ground Floor	102.3 S.F. Total	2,037.1S.F.	3 Bedrooms 2 1/2 Baths
1st Floor	1,280.7 S.F.		
Loft Bedroom	476.3 S.F.		
Tower	177.8 S.F.		

CEDAR POINT 2037-3



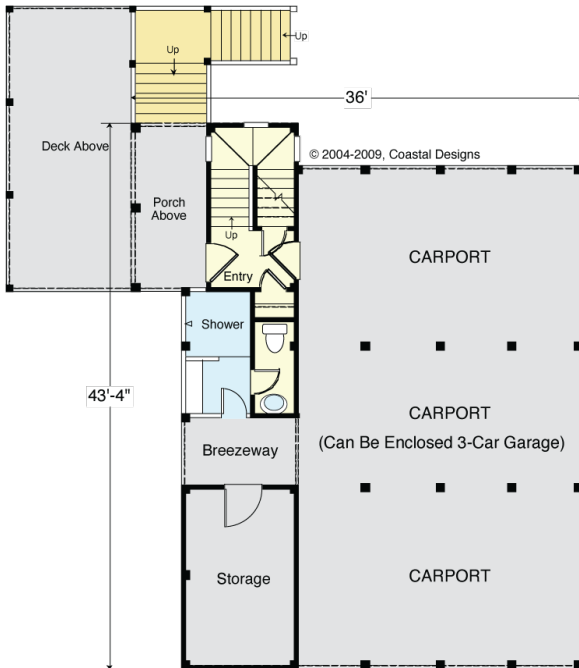
STREET FRONT

© 2004-2009, Coastal Designs



LEFT SIDE

© 2004-2009, Coastal Designs



GROUND FLOOR PLAN
102.3 S.F. (Heated)

Patterned after an old Coast Guard Station in Cedar Point, North Carolina, the original plan, called a "Southern Style," was built for the Bogue Inlet Life-Saving Station in 1904, designed by the Coast Guard's last architect, Victor Mendleheff. This classic station is still clad in its original weathered grey cedar shingles, still doing duty as a place of refuge. It is now a private residence on the Intracoastal Waterway in Cedar Point, North Carolina.

COASTAL DESIGNS

cottages for coastal living

web: coastaldesigns.com
email: designer@coastaldesigns.com

Copyright © 2003-2024, all rights reserved by Coastal Designs. This plan depicts a sketch plan, designer reserves the right to make changes and modifications for improvements. Measurements and dimensions are approximate.

CEDAR POINT 2037-3

2,037 Square Feet Living Area
43'-4" to 52'-8" wide x 36'-0" to 46'-0" deep
Roof height maximum 36'-4" w/ 34'-10" avg. ht.

Ground Floor	102.3 S.F.	Total	2,037.1 S.F.	3 Bedrooms 2 1/2 Baths
1st Floor	1,280.7 S.F.			
Loft Bedroom	476.3 S.F.			
Tower	177.8 S.F.			